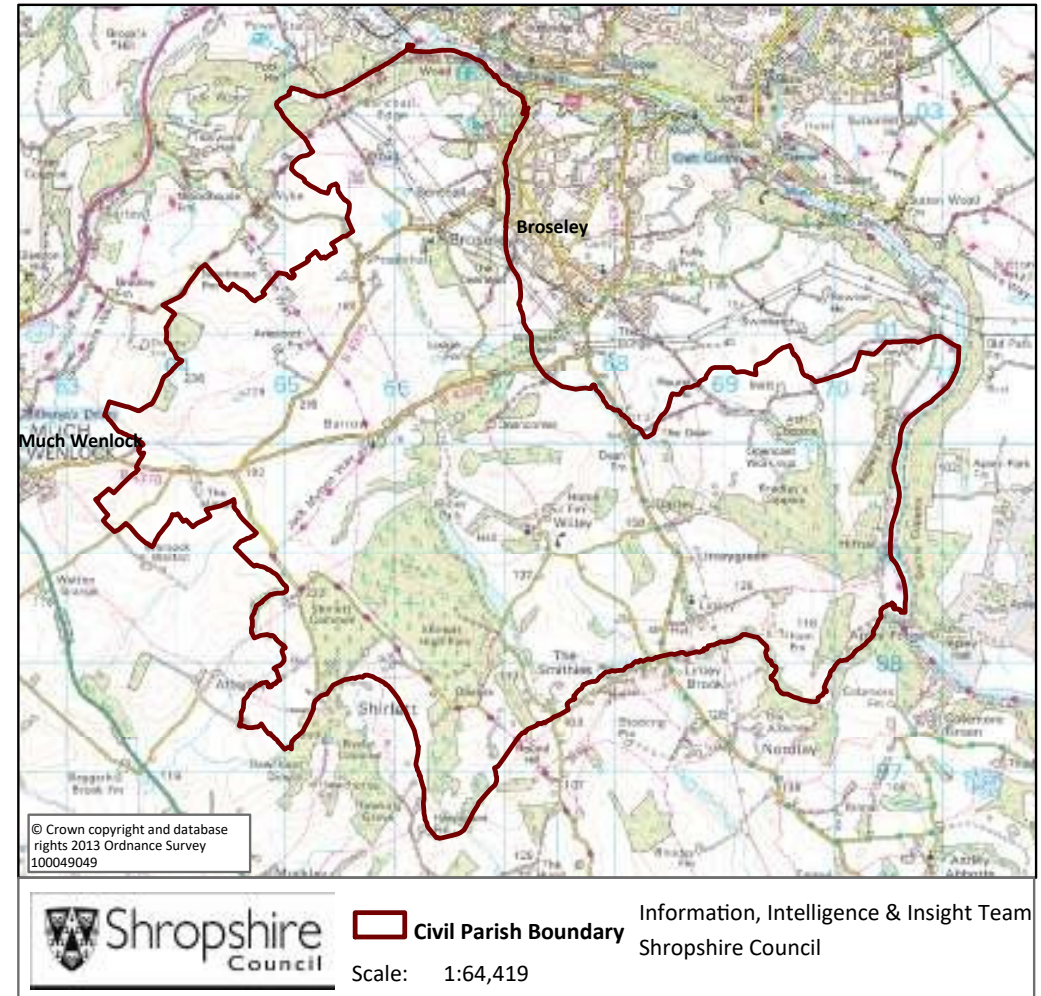


# Barrow Parish

## Contents

Population	2
Health	4
Index of Multiple Deprivation	5
Housing	6
Unemployment and Labour Market	7

Key Facts:	Barrow Parish
Area:	2531.3 hectares
Population Density:	0.30 persons per hectare
Total Population	680 (340 males, 340 females)
Household Population:	680 (100.0%)
Households:	280
Dwellings:	296
Communal Establishment no. /population	0 Communal Establishments 0 residents (0.0% of total population)



Source: 2011 Census, Office of National Statistics © Crown Copyright 2018

# Barrow Parish

## Population Age Structure

Table: Population by five year age group (2011 Census)

	Total Population	% of Total Population			
		Barrow	Shropshire	West Midlands	England
<b>All ages</b>	680	100.0	100.0	100.0	100.0
<b>0 – 4</b>	36	5.3	5.1	6.3	6.3
<b>5 – 9</b>	25	3.7	5.1	5.8	5.6
<b>10 – 14</b>	39	5.7	5.9	6.1	5.8
<b>15 – 19</b>	30	4.4	6.2	6.6	6.3
<b>20 – 24</b>	32	4.7	5.4	6.8	6.8
<b>25 – 29</b>	17	2.5	5.1	6.5	6.9
<b>30 – 34</b>	33	4.9	5.0	6.1	6.6
<b>35 – 39</b>	52	7.6	5.8	6.4	6.7
<b>40 – 44</b>	53	7.8	7.2	7.3	7.3
<b>45 – 49</b>	61	9.0	7.7	7.2	7.3
<b>50 – 54</b>	60	8.8	6.9	6.3	6.4
<b>55 – 59</b>	66	9.7	6.6	5.7	5.7
<b>60 – 64</b>	67	9.9	7.3	6.0	6.0
<b>65 – 69</b>	51	7.5	6.2	5.0	4.7
<b>70 – 74</b>	22	3.2	4.9	4.0	3.9
<b>75 – 79</b>	18	2.6	3.8	3.2	3.1
<b>80 – 84</b>	11	1.6	2.9	2.4	2.4
<b>85 – 89</b>	4	0.6	1.8	1.5	1.5
<b>90 Plus</b>	3	0.4	0.9	0.7	0.8

Source: 2011 Census, National Statistics.

- Early years: 5.3% (36 children) of the population were aged 0 to 4 years in March 2011. This compares with 5.1% at County level, 6.3% regionally and 6.3% nationally.
- School age: 12.2% (83 children) of the population were aged 5 to 17 years in March 2011. This compares with 14.9% at County level, 15.8% regionally and 15.1% nationally.
- Working age: 66.5% (452 people) of the population were aged 18 to 64 years in March 2011. This compares with 59.3% at County level, 61.0% regionally and 62.3% nationally.
- Retirement age: 16.0% (109 people) of the population were aged 65 and over in March 2011. This compares with 20.7% at County level, 16.9% regionally and 16.3% nationally.
- Over 85 year olds: 1.0% (7) of the population were aged 85 and over in March 2011. This compares with 2.7% at County level, 2.2% regionally and 2.2% nationally.

# Barrow Parish

## Diversity

- The 2011 Census showed Barrow Parish had a black, mixed and minority ethnic group population of 1 (0.15%). The largest broad ethnic group was 'Asian' (within this the largest group is 'Indian').
- When asked about their religion 29.3% (199 people) identified themselves as having no religion or did not state it on the form. The majority of people (70.0%) identified themselves as Christian and 0.7% (5 people) identified themselves as having an alternative religion.
- The 2011 Census showed that there were no residents who could not speak English well and could not speak English at all.

## Car Ownership

- The 2011 Census showed that 19 households (6.8%) did not own a car and subsequently were reliant on other forms of transport such as public transport services. In total 541 cars were owned by households resident in the place plan area.

# Barrow Parish

## Health

### General Health

The 2011 Census asked three questions relating to health and the provision of unpaid care. The questions relate to whether people felt their general health was good, whether they looked after or gave help or support to other family members, friends, neighbours or others and lastly whether their day to day activities were limited because of a health problem or disability.

At the time of the 2011 Census 49% of people in Barrow Parish said that they felt they were in “Very Good Health”, this compares to 46% for Shropshire as a whole.

1.0% reported that they were in “Very Bad Health”. This is in line with the overall result for Shropshire (1%).

### Provision of Unpaid Care

The question asked “do you look after, or give any help or support to family members, friends, neighbours or others because of either; a long term physical or mental ill health/disability? Or because of problems related to old age?”

At the time of the Census 8% said that they were providing 1 to 19 hours of unpaid care a week. This is slightly higher than the Shropshire figure of 7%.

1% said they provided between 20 and 49 hours per unpaid care. This is in line with the Shropshire figure of 1%.

2% said they provided over 50 hours of unpaid care. This is in line with the figure for Shropshire as a whole (2%) and the figure for England & Wales (2%).

### Long Term Illness or Disability

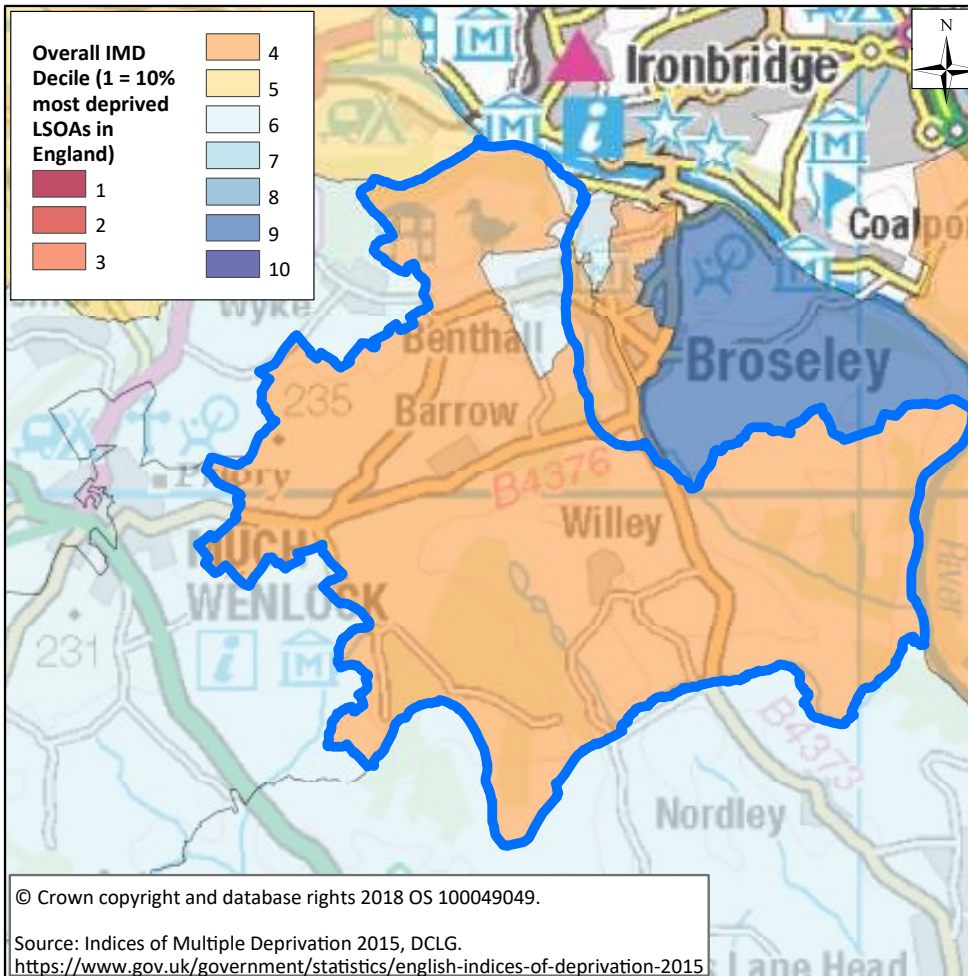
The Census asked “Are your day-to-day activities limited a lot due to a health problem or disability which has lasted, or is expected to last, at least 12 months?”

6% said that their day-to-day activities were limited a lot due to a health problem or disability. This is less than the County figure of 8%.

The percentage who reported their day-to-day activities were limited a little was 11%. This is slightly higher than the figure of 10% for Shropshire as a whole.

# Barrow Parish

## Index Multiple Deprivation



Decile 1 LSOAs are the most deprived nationally and decile 10 LSOAs are the least deprived nationally.

The lower super output area (LSOA) that predominantly covers Barrow Parish falls within decile 4 nationally. The LSOA, in the north east of the Parish (around Benthall) falls within the 6th decile nationally.

# Barrow Parish

## Housing

- There were 280 households in Barrow Parish at the time of the 2011 Census.
- The parish had 680 usual residents and covers an area of 2,531 hectares.
- 72 households were owner occupiers who owned their home outright. This equates to 25.7% of all households. There were 76 households (27.1%) who owned their home with a mortgage or loan.
- There were 104 households (37.1% of all households) that privately rented their home from a landlord. There were also 5 households (1.8% of all households) who privately rented from a landlord classified as 'Other'.
- 5 households were renting social housing from the Council totalling 1.8% of all households. There were also 5 households (1.8%) renting social housing from 'Other' sources.
- In Barrow Parish there were 172 detached dwellings representing 58.1% of all dwellings. There were also 86 semi-detached and 14 terraced dwellings equating to 29.1% and 4.7% respectively.
- 14.3% of all households were one person pensioner households.
- 23.6% of households in the area had dependent children. The number of married couple households with dependent children was 46 and the number of cohabiting couples with dependent children was 10.
- There were 8 lone parent households (with dependent children), which equates to 2.9% of all households.

# Barrow Parish

## Unemployment and Labour Market

### Unemployment

- At the time of the Census, there were 14 residents who were unemployed but available for work. This is 2.6% of the 16-74 year old population, compared to 3.3% for Shropshire.
- 1 young person (aged 16-24) was unemployed, plus a further 3 who were aged 50 to 74 years.
- Long-term unemployment is also an issue – 35.7% of all unemployed people were classed as long-term unemployed in 2011. This is the equivalent of 5 people.

### Labour Force

- 411 residents of Barrow Parish aged 16-74 years were economically active.
- 29.8% of the Barrow Parish population had level 4 or above qualifications compared with
- 27.5% in Shropshire and 27.4% in England.
- The number of people with no formal qualifications was 105 – at 18.3% of the population (aged over 16), this compares with the county average of 22.5%.
- 43.2% of the population work in standard occupation classifications 1-3 (managers, directors and senior officials, professional, associate professional and technical) and 13.7% work in standard occupation classifications 8 and 9 (process, plant and machine operatives and elementary occupations).

### Travel to Work (Census 2011)

- 16.4% of the population in Barrow Parish were self-employed, and 7.3% worked from home compared to 5.6% for Shropshire.
- The car was used as the main means of travel to work for 59.2%, while 1.3% used public transport.