

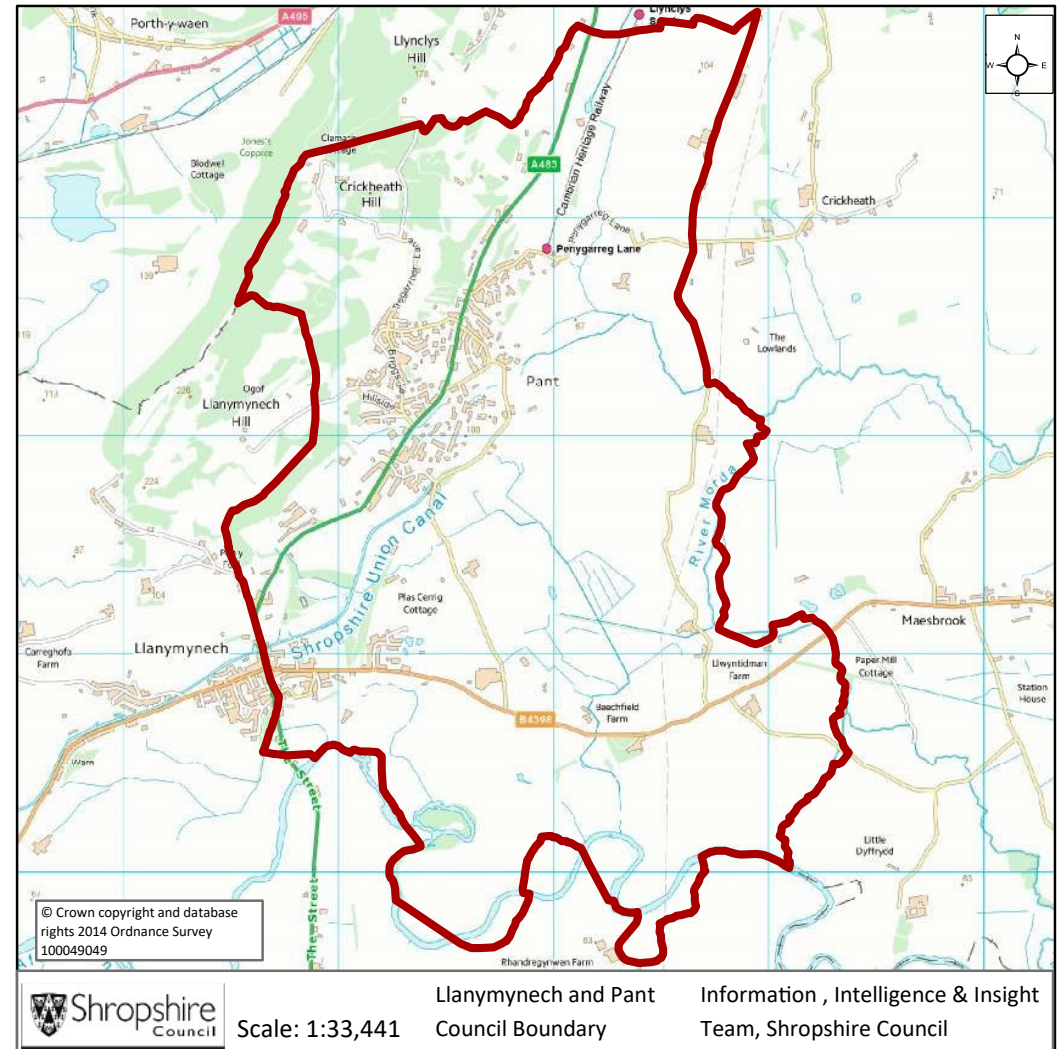
Llanymynech and Pant Parish

Contents

Population	2
Health	4
Index of Multiple Deprivation	5
Housing	6
Unemployment and Labour Market	8

Key Facts:	Llanymynech and Pant Parish
Area:	780.7 hectares
Population Density:	2.10 persons per hectare
Total Population	1,675 (818 males, 857 females)
Household Population:	1,669 (99.6%)
Households:	724
Dwellings:	769
Communal Establishment no. / population	6 Communal Establishments 6 residents (0.4% of total population)

Source: 2011 Census, Office of National Statistics, © Crown Copyright 2018



Llanymynech and Pant Parish

Population Age Structure

Table: Population by five year age group (2011 Census)

	Total Population	% of Total Population			
		Llanymynech and Pant	Shropshire	West Midlands	England
All ages	1,675	100.0	100.0	100.0	100.0
0 – 4	80	4.8	5.1	6.3	6.3
5 – 9	73	4.4	5.1	5.8	5.6
10 – 14	79	4.7	5.9	6.1	5.8
15 – 19	91	5.4	6.2	6.6	6.3
20 – 24	63	3.8	5.4	6.8	6.8
25 – 29	77	4.6	5.1	6.5	6.9
30 – 34	64	3.8	5.0	6.1	6.6
35 – 39	86	5.1	5.8	6.4	6.7
40 – 44	118	7.0	7.2	7.3	7.3
45 – 49	147	8.8	7.7	7.2	7.3
50 – 54	104	6.2	6.9	6.3	6.4
55 – 59	125	7.5	6.6	5.7	5.7
60 – 64	140	8.4	7.3	6.0	6.0
65 – 69	140	8.4	6.2	5.0	4.7
70 – 74	121	7.2	4.9	4.0	3.9
75 – 79	86	5.1	3.8	3.2	3.1
80 – 84	40	2.4	2.9	2.4	2.4
85 – 89	29	1.7	1.8	1.5	1.5
90 Plus	12	0.7	0.9	0.7	0.8

- Early years: 4.8% (80 children) of the population were aged 0 to 4 years in March 2011. This compares with 5.1% at County level, 6.3% regionally and 6.3% nationally.
- School age: 12.7% (212 children) of the population were aged 5 to 17 years in March 2011. This compares with 14.9% at County level, 15.8% regionally and 15.1% nationally.
- Working age: 57.0% (955 people) of the population were aged 18 to 64 years in March 2011. This compares with 59.3% at County level, 61.0% regionally and 62.3% nationally.
- Retirement age: 25.6% (428 people) of the population were aged 65 and over in March 2011. This compares with 20.7% at County level, 16.9% regionally and 6.3% nationally.
- Over 85 year olds: 2.4% (41) of the population were aged 85 and over in March 2011. This compares with 2.7% at County level, 2.2% regionally and 2.2% nationally.

Source: 2011 Census, National Statistics.

Please note: Ward boundary changes in 2009 mean it is not possible to compare over time

Llanymynech and Pant Parish

Diversity

- The 2011 Census showed Llanymynech and Pant Parish had a black and minority ethnic group population of 9 (0.54%). The largest broad ethnic group is 'Asian' (within this the largest group is 'Other Asian'). For the first time the 2011 Census showed Llanymynech and Pant Parish had a gypsy population of 1.
- When asked about their religion 24.7% (413 people) identified themselves as having no religion or did not state it on the form. The majority of people (74.4%, 1,247 people) identified themselves as Christian and 1.0% (15 people) identified themselves as having an alternative religion.
- The 2011 Census showed that 3 people could not speak English well and no-one could not speak English at all.

Car Ownership

- The 2011 Census showed that 51 households (7.0%) did not own a car and subsequently were reliant on other forms of transport such as public transport services. In total 1,208 cars are owned by households resident in Llanymynech and Pant Parish.

Llanymynech and Pant Parish

Health

General Health

The 2011 Census asked three questions relating to health and the provision of unpaid care. The questions relate to whether people felt their general health was good, whether they looked after or gave help or support to other family members, friends, neighbours or others and lastly whether their day to day activities were limited because of a health problem or disability.

- At the time of the 2011 Census 46% of people in Llanymynech and Pant said that they felt they were in “Very Good Health”, this compares to 46% for Shropshire as a whole.
- 1.0% reported that they were in “Very Bad Health”. This is in line with the overall result for Shropshire (1%).

Provision of Unpaid Care

The question asked “do you look after, or give any help or support to family members, friends, neighbours or others because of either; a long term physical or mental ill health/disability? Or because of problems related to old age?”

- At the time of the Census 8% said that they were providing 1 to 19 hours of unpaid care a week. This is slightly higher than the Shropshire figure of 7%.
- 1% said they provided between 20 and 49 hours per unpaid care. This is in line with the Shropshire figure of 1%.
- 4% said they provided over 50 hours of unpaid care. This is slightly higher than the figure for Shropshire as a whole (2%) and England & Wales (2%).

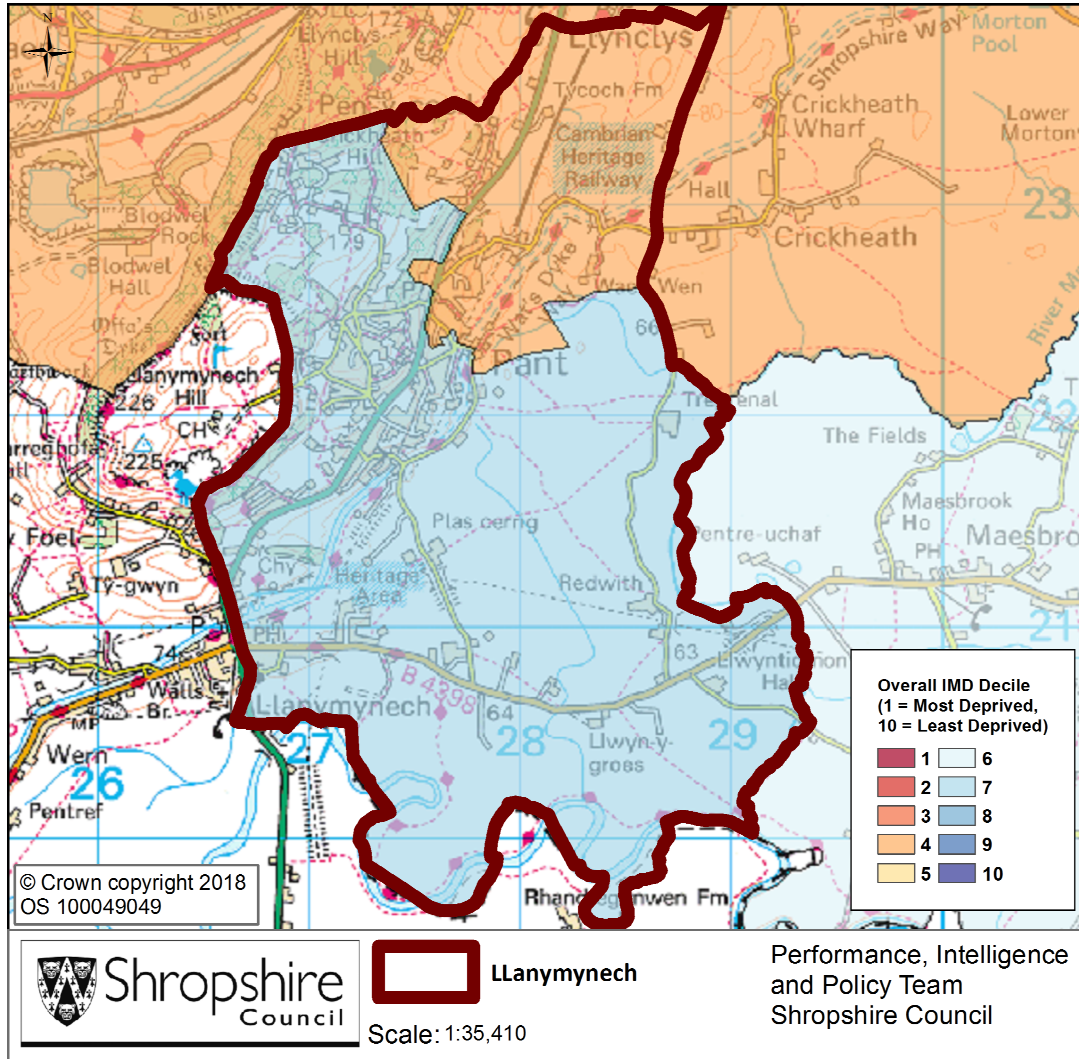
Long Term Illness or Disability

The Census asked “Are your day-to-day activities limited a lot due to a health problem or disability which has lasted, or is expected to last, at least 12 months?”

- 9% said that their day-to-day activities limited a lot due to a health problem or disability. This is slightly higher than the figure of 8% for Shropshire as a whole.
- The percentage who reported their day-to-day activities were limited a little was 11%. This is slightly higher than the figure of 10% for Shropshire as a whole.

Llanymynech and Pant Parish

Index of Multiple Deprivation



The lower super output area that covers Llanymynech and Pant falls within Decile 7 nationally.

Decile 1 is the most deprived nationally and Decile 10 the least deprived nationally.

Source: IMD 2015, Department for Communities and Local Government © Crown Copyright 2018.

Llanymynech and Pant Parish

Housing

- There were 724 households in Llanymynech and Pant at the time of the 2011 Census.
- The parish had 1,675 usual residents and covers an area of 781 hectares.
- 366 households were owner occupiers (owned outright) equating to 50.6% of all households. There were 230 households (31.8%) who owned their home with a mortgage or loan.
- There were 51 households (7.0% of all households) that privately rented their home from a landlord. There were also 8 households (1.1% of all households) who privately rented from a landlord classified as 'Other'.
- 35 households were renting social housing from the Council totalling 4.8% of all households. There were also 23 households (3.2%) renting social housing from 'Other' sources.
- In Llanymynech and Pant there were 512 detached dwellings representing 66.6% of all dwellings. There were also 181 semi-detached and 53 terraced dwellings equating to 23.5% and 6.9% respectively.
- 12.6% of all households were one person pensioner households.
- 24.4% of households in the area had dependent children. The number of married couple households with dependent children was 114 and the number of cohabiting couples with dependent children was 30.
- There were 21 lone parent households (with dependent children), which equates to 2.9% of all households.

Llanymynech and Pant Parish

Unemployment and Labour Market

Unemployment

- At the time of the Census, there were 32 residents who were unemployed but available for work. This is 2.6% of the 16-74 year old population, compared to 3.3% for Shropshire.
- 8 young people (aged 16-24) were unemployed, plus a further 9 who were 50 to 74.
- Long term unemployment is also an issue – 18.75% of all unemployed people were classed as long-term unemployed in 2011. This is the equivalent of 6 people.

Labour Force

- 819 Llanymynech and Pant residents aged 16-74 are economically active.
- 27.4% of the Llanymynech and Pant population has level 4 or above qualifications compared with 27.5% in Shropshire and 27.4% in England.
- The number with no formal qualifications at all stands at 283 people – at 20.0% of the population (aged over 16), this compares with the county average of 22.5%.
- 39.0% of the population work in standard occupation classifications 1-3 (managers, directors and senior officials, professional, associate professional and technical) and 17.6% work in standard occupation classifications 8 and 9 (process, plant and machine operatives and elementary occupations).

Travel to Work (Census 2011)

- 15.0% of the population in Llanymynech and Pant are self-employed, and 5.6% work from home compared with 5.6% for Shropshire.
- The car is used as the main means of travel to work for 50.5%, while 1.3% uses public transport.