

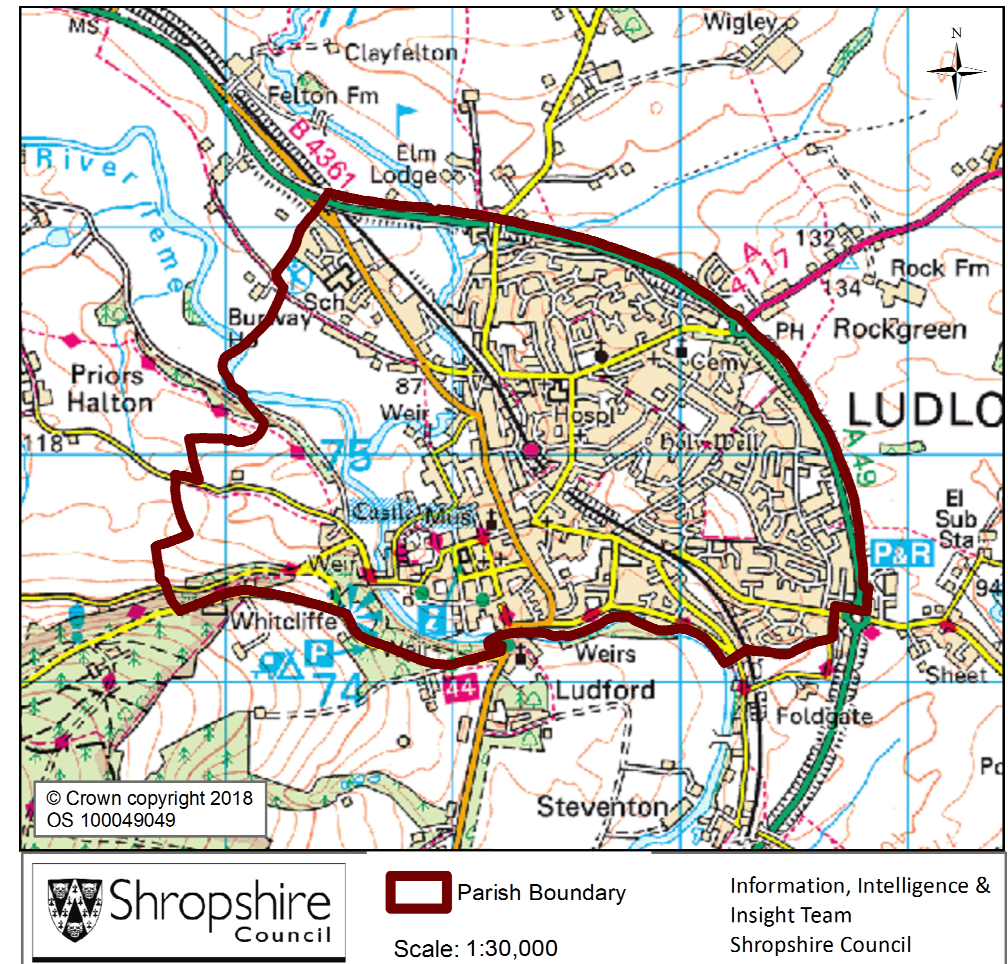
# Ludlow Parish

## Contents

Population	2
Health	4
Index of Multiple Deprivation	5
Housing	6
Unemployment and Labour Market	7

Key Facts:	Ludlow Parish
Area:	454.1 hectares
Population Density:	22.60 persons per hectare
Total Population	10266 (4942 males, 5324 females)
Household Population:	10125 (98.6%)
Households:	4888
Dwellings:	5218
Communal Establishment no. / population	28 Communal Establishments 141 residents (1.4% of total population)

Source: 2011 Census, Office of National Statistics, © Crown Copyright 2018



# Ludlow Parish

## Population Age Structure

Table: Population by five year age group (2011 Census)

	Total Population	% of Total Population			
		Ludlow	Shropshire	West Midlands	England
<b>All ages</b>	10266	100.0	100.0	100.0	100.0
<b>0 – 4</b>	504	4.9	5.1	6.3	6.3
<b>5 – 9</b>	500	4.9	5.1	5.8	5.6
<b>10 – 14</b>	553	5.4	5.9	6.1	5.8
<b>15 – 19</b>	504	4.9	6.2	6.6	6.3
<b>20 – 24</b>	531	5.2	5.4	6.8	6.8
<b>25 – 29</b>	523	5.1	5.1	6.5	6.9
<b>30 – 34</b>	538	5.2	5.0	6.1	6.6
<b>35 – 39</b>	550	5.4	5.8	6.4	6.7
<b>40 – 44</b>	623	6.1	7.2	7.3	7.3
<b>45 – 49</b>	700	6.8	7.7	7.2	7.3
<b>50 – 54</b>	672	6.5	6.9	6.3	6.4
<b>55 – 59</b>	674	6.6	6.6	5.7	5.7
<b>60 – 64</b>	729	7.1	7.3	6.0	6.0
<b>65 – 69</b>	677	6.6	6.2	5.0	4.7
<b>70 – 74</b>	640	6.2	4.9	4.0	3.9
<b>75 – 79</b>	524	5.1	3.8	3.2	3.1
<b>80 – 84</b>	421	4.1	2.9	2.4	2.4
<b>85 – 89</b>	258	2.5	1.8	1.5	1.5
<b>90 Plus</b>	145	1.4	0.9	0.7	0.8

- Early years: 4.9% (504 children) of the population were aged 0 to 4 years in March 2011. This compares with 5.1% at County level, 6.3% regionally and 6.3% nationally.
- School age: 13.2% (1357 children) of the population were aged 5 to 17 years in March 2011. This compares with 14.9% at County level, 15.8% regionally and 15.1% nationally.
- Working age: 55.9% (5740 people) of the population were aged 18 to 64 years in March 2011. This compares with 59.3% at County level, 61.0% regionally and 62.3% nationally.
- Retirement age: 26.0% (2665 people) of the population were aged 65 and over in March 2011. This compares with 20.7% at County level, 16.9% regionally and 16.3% nationally.
- Over 85 year olds: 3.9% (403) of the population were aged 85 and over in March 2011. This compares with 2.7% at County level, 2.2% regionally and 2.2% nationally.

Source: 2011 Census, National Statistics.

Please note: Ward boundary changes in 2009 mean it is not possible to compare over time

# Ludlow Parish

## Diversity

- The 2011 Census showed Ludlow Parish had a black and minority ethnic group population of 171 (1.67%). The largest broad ethnic group is 'Mixed' (within this the largest group is 'White and Black Caribbean'). For the first time the 2011 Census showed Ludlow Parish had a gypsy population of 14.
- When asked about their religion 32.9% (3382 people) identified themselves as having no religion or did not state it on the form. The majority of people (65.8%) identified themselves as Christian and 1.3% (133 people) identified themselves as having an alternative religion.
- The 2011 Census showed that 31 people could not speak English well and 7 people could not speak English at all.

## Car Ownership

- The 2011 Census showed that 1225 households (25.1%) did not own a car and subsequently are reliant on other forms of transport such as public transport services. In total 5325 cars are owned by households resident in the parish area.

# Ludlow Parish

## Health

### General Health

The 2011 Census asked three questions relating to health and the provision of unpaid care. The questions relate to whether people felt their general health was good, whether they looked after or gave help or support to other family members, friends, neighbours or others and lastly whether their day to day activities were limited because of a health problem or disability.

- At the time of the 2011 Census 42% of people in Ludlow said that they felt they were in “Very Good Health”, this compares to 46% for Shropshire as a whole.
- 1.3% reported that they were in “Very Bad Health”. This is slightly higher than the overall result for Shropshire (1%).

### Provision of Unpaid Care

The question asked “do you look after, or give any help or support to family members, friends, neighbours or others because of either; a long term physical or mental ill health/disability? or because of problems related to old age?”

- At the time of the Census 7% said that they were providing 1 to 19 hours of unpaid care a week. This is in line with the Shropshire figure of 7%
- 1% said they provided between 20 and 49 hours per unpaid care. This is in line with the Shropshire figure of 1%.
- 3% said they provided over 50 hours of unpaid care. This is slightly higher than the figure for Shropshire as a whole (2%) and England & Wales (2%).

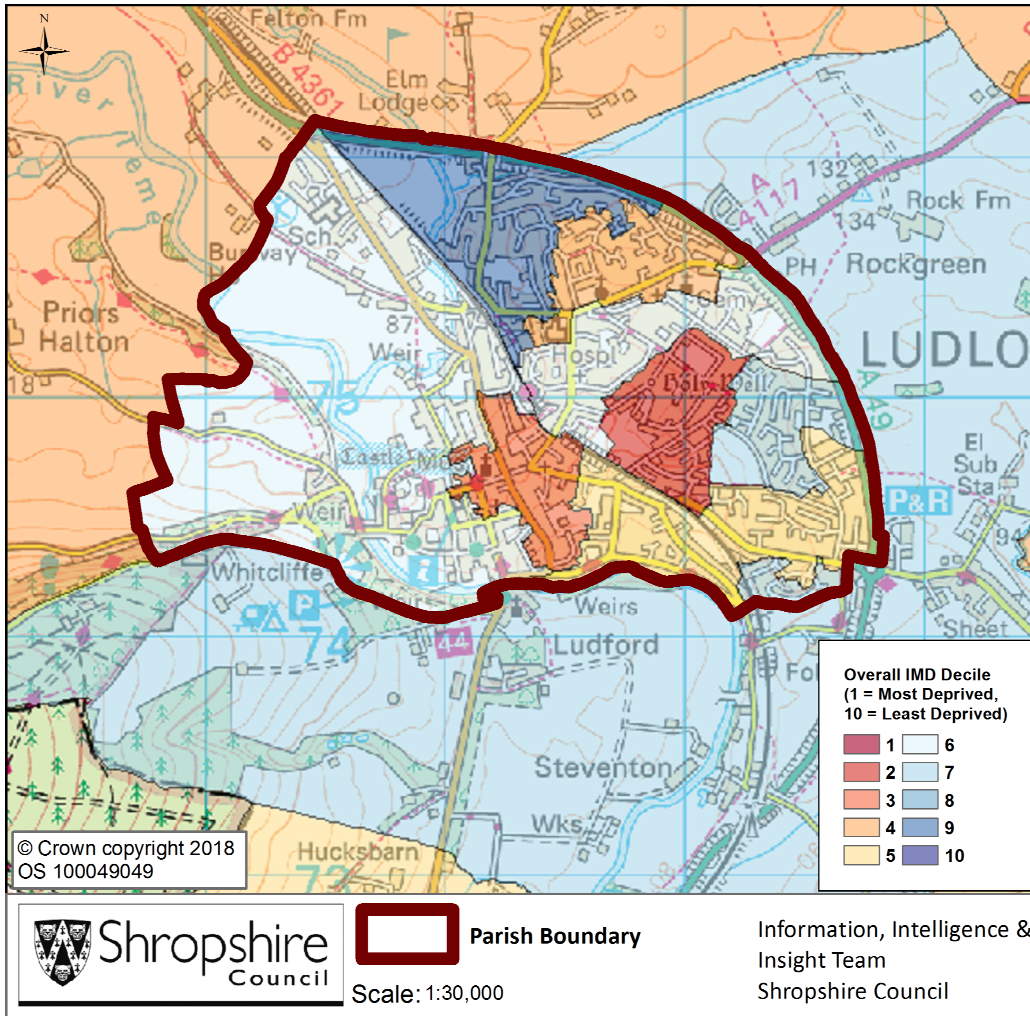
### Long Term Illness or Disability

The Census asked “Are your day-to-day activities limited a lot due to a health problem or disability which has lasted, or is expected to last, at least 12 months?”

- 10% said that their day-to-day activities limited a lot due to a health problem or disability. This is higher than the figure for Shropshire as a whole and that of 9% for England and Wales.
- The percentage who reported their day-to-day activities were limited a little was 13%. This is slightly higher than the figure of 10% for Shropshire as a whole.

# Ludlow Parish

## Index of Multiple Deprivation



The lower super output areas that cover Ludlow Parish fall within Deciles, 2, 3, 4, 5, 6, 7 and 9 nationally.

Decile 1 is the most deprived nationally and Decile 10 the least deprived nationally.

Source: IMD 2015. Department for Communities and Local Government © Crown Copyright 2018.

# Ludlow Parish

## Housing

- There were 4888 households in Ludlow at the time of the 2011 Census.
- The parish had 10266 usual residents and covers an area of 454 hectares.
- 2090 households were owner occupiers (owned outright) equating to 42.8% of all households. There were 1102 households (22.5%) who owned their home with a mortgage or loan.
- There were 655 households (13.4% of all households) that privately rented their home from a landlord. There were also 70 households (1.4% of all households) who privately rented from a landlord classified as 'Other'.
- 82 households were renting social housing from the Council totalling 1.7% of all households. There were also 771 households (15.8%) renting social housing from 'Other' sources.
- In Ludlow there were 1431 detached dwellings representing 27.4% of all dwellings. There were also 1430 semi-detached and 1759 terraced dwellings equating to 27.3% and 33.6% respectively.
- 18.7% of all households were one person pensioner households.
- 21.5% of households in the area had dependent children. The number of married couple households with dependent children was 564 and the number of cohabiting couples with dependent children was 179.
- There were 266 lone parent households (with dependent children), which equates to 5.4% of all households.

## Unemployment and Labour Market

### Unemployment

- At the time of the Census, there were 282 residents who were unemployed but available for work. This is 3.9% of the 16-74 year old population, compared to 3.3% for Shropshire.
- 88 young people (aged 16-24) were unemployed, plus a further 79 who were 50 to 74.
- Long term unemployment is also an issue – 35.46% of all unemployed people were classed as long-term unemployed in 2011. This is the equivalent of 100 people.

### Labour Force

- 4982 Ludlow residents aged 16-74 are economically active.
- 24.4% of the Ludlow population has level 4 or above qualifications compared with 27.5% in Shropshire and 27.4% in England.
- The number with no formal qualifications at all stands at 2260 people – at 26.3% of the population (aged over 16), this compares with the county average of 22.5%.
- 30.6% of the population work in standard occupation classifications 1-3 (managers, directors and senior officials, professional, associate professional and technical) and 22.5% work in standard occupation classifications 8 and 9 (process, plant and machine operatives and elementary occupations).

### Travel to Work (Census 2011)

- 11.8% of the population in Ludlow are self-employed, and 4.1% work from home compared with 5.6% for Shropshire.
- The car is used as the main means of travel to work for 41.1%, while 1.6% use public transport.