

Adderley Parish

Contents

Population	2
Health	4
Index of Multiple Deprivation	5
Housing	6
Unemployment and Labour Market	8

Table 1: Key Population Facts (2011 Census)

Key Facts:	Parish
Area:	1,965.3 hectares
Population Density:	0.20 persons per hectare
Total Population	372 (183 males, 189 females)
Household Population:	372 (100.0%)
Households:	157
Dwellings:	161
Communal Establishment no. / population	0 Communal Establishments 0 residents (0.0% of total population)

Source: 2011 Census, Office of National Statistics © Crown Copyright 2018



Adderley Parish

Population Age Structure

	Total Population	% of Total Population			
		Adderley	Shropshire	West Midlands	England
All ages	372	100.0	100.0	100.0	100.0
0 – 4	20	5.4	5.1	6.3	6.3
5 – 9	18	4.8	5.1	5.8	5.6
10 – 14	22	5.9	5.9	6.1	5.8
15 – 19	21	5.6	6.2	6.6	6.3
20 – 24	12	3.2	5.4	6.8	6.8
25 – 29	14	3.8	5.1	6.5	6.9
30 – 34	20	5.4	5.0	6.1	6.6
35 – 39	22	5.9	5.8	6.4	6.7
40 – 44	27	7.3	7.2	7.3	7.3
45 – 49	31	8.3	7.7	7.2	7.3
50 – 54	24	6.5	6.9	6.3	6.4
55 – 59	33	8.9	6.6	5.7	5.7
60 – 64	42	11.3	7.3	6.0	6.0
65 – 69	27	7.3	6.2	5.0	4.7
70 – 74	17	4.6	4.9	4.0	3.9
75 – 79	10	2.7	3.8	3.2	3.1
80 – 84	4	1.1	2.9	2.4	2.4
85 – 89	5	1.3	1.8	1.5	1.5
90 Plus	3	0.8	0.9	0.7	0.8

Table 2: Population by five year age group (2011 Census)

- Early years: 5.4% (20 children) of the population were aged 0 to 4 years in March 2011. This compares with 5.1% at County level, 6.3% regionally and 6.3% nationally.
- School age: 14.5% (54 children) of the population were aged 5 to 17 years in March 2011. This compares with 14.9% at County level, 15.8% regionally and 15.1% nationally.
- Working age: 62.4% (232 people) of the population were aged 18 to 64 years in March 2011. This compares with 59.3% at County level, 61.0% regionally and 62.3% nationally.
- Retirement age: 17.7% (66 people) of the population were aged 65 and over in March 2011. This compares with 20.7% at County level, 16.9% regionally and 16.3% nationally.
- Over 85 year olds: 2.2% (8) of the population were aged 85 and over in March 2011. This compares with 2.7% at County level, 2.2% regionally and 2.2% nationally.

Adderley Parish

Diversity

- The 2011 Census showed Adderley Parish had a black and minority ethnic group population of 8 (2.15%). The largest broad ethnic group is 'Mixed' (within this the largest group is 'White and Black Caribbean'). The 2011 Census showed Adderley Parish had a gypsy population of 0.
- When asked about their religion 29.0% (108 people) identified themselves as having no religion or did not state it on the form. The majority of people (71.0%) identified themselves as Christian and 0.0% (0 people) identified themselves as having an alternative religion.

Car Ownership

- The 2011 Census showed that 7 households (4.5%) did not own a car and subsequently were reliant on other forms of transport such as public transport services. In total 287 cars are owned by households resident in the parish.

Adderley Parish

Health

General Health

The 2011 Census asked three questions relating to health and the provision of unpaid care. The questions relate to whether people felt their general health was good, whether they looked after or gave help or support to other family members, friends, neighbours or others and lastly whether their day to day activities were limited because of a health problem or disability.

- At the time of the 2011 Census 46% of people in Adderley said that they felt they were in “Very Good Health”, this compares to 46% for Shropshire as a whole.
- 1.6% reported that they were in “Very Bad Health”. This is slightly higher than the overall result for Shropshire (1%).

Provision of Unpaid Care

The question asked “do you look after, or give any help or support to family members, friends, neighbours or others because of either; a long term physical or mental ill health/disability? or because of problems related to old age?”

- At the time of the Census 10% said that they were providing 1 to 19 hours of unpaid care a week. This is slightly higher than the Shropshire figure of 7%.
- 2% said they provided between 20 and 49 hours per unpaid care. This is slightly higher than the Shropshire figure of 1%.
- 2% said they provided over 50 hours of unpaid care. This is in line with the figure for Shropshire as a whole (2%) and the figure for England & Wales (2%).

Long Term Illness or Disability

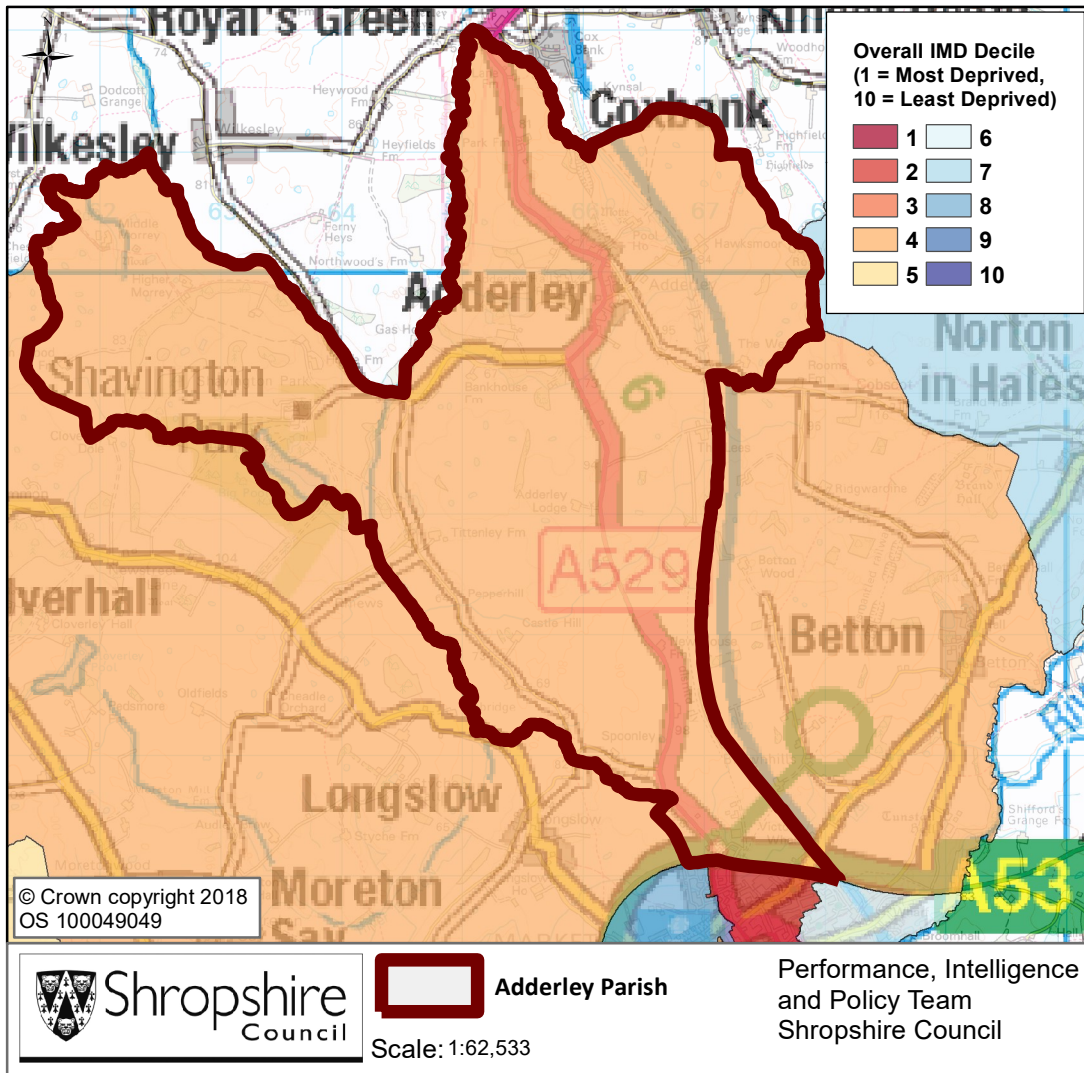
The Census asked “Are your day-to-day activities limited a lot due to a health problem or disability which has lasted, or is expected to last, at least 12 months?”

7% said that their day-to-day activities limited a lot due to a health problem or disability. This is less than the County figure of 8%.

The percentage who reported their day-to-day activities were limited a little was 10%. This is in line with the Shropshire figure of 10%.

Adderley Parish

Index of Multiple Deprivation



The lower super output area that covers Adderley Parish falls within Quintile 3 nationally.

Quintile 1 is the most derived nationally and Quintile 5 the least deprived nationally.

Source: IMD 2015, Department for Communities and Local Government, © Crown Copyright 2018.

Adderley Parish

Housing

- There were 157 households in Adderley at the time of the 2011 Census.
- The parish had 372 usual residents and covers an area of 1,965 hectares.
- 69 households were owner occupiers (owned outright) equating to 43.9% of all households. There were 46 households (29.3%) who owned their home with a mortgage or loan.
- There were 26 households (16.6% of all households) that privately rented their home from a landlord. There were also 3 households (1.9% of all households) who privately rented from a landlord classified as 'Other'.
- There were no households renting social housing from the Council. There were also 7 households (4.5%) renting social housing from 'Other' sources.
- In Adderley there were 107 detached dwellings representing 66.5% of all dwellings. There were also 36 semi-detached and 14 terraced dwellings equating to 22.4% and 8.7% respectively.
- 10.2% of all households were one person pensioner households.
- 26.8% of households in the area had dependent children. The number of married couple households with dependent children was 32 and the number of cohabiting couples with dependent children was 3.

Adderley Parish

Unemployment and Labour Market

Unemployment

- At the time of the 2011 Census, there were 3 residents who were unemployed but available for work. This is 1.0% of the 16-74 year old population, compared to 3.3% for Shropshire.
- 1 young person (aged 16-24) was unemployed, plus a further person who was aged 50 to 74 years.

Labour Force

- 204 Adderley residents aged 16-74 are economically active.
- 31.5% of the Adderley population had level 4 or above qualifications compared with 27.5% in Shropshire and 27.4% in England.
- The number with no formal qualifications at all stands at 66 people – at 21.2% of the population (aged over 16), this compares with the county average of 22.5%.
- 47.3% of the population work in standard occupation classifications 1-3 (managers, directors and senior officials, professional, associate professional and technical) and 14.0% work in standard occupation classifications 8 and 9 (process, plant and machine operatives and elementary occupations).

Travel to Work (Census 2011)

- 19.7% of the population in Adderley are self-employed, and 10.4% work from home compared with 5.6% for Shropshire.
- The car is used as the main means of travel to work for 48.8%, while 1.0% use public transport.