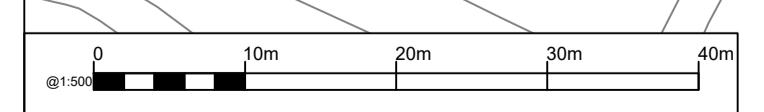
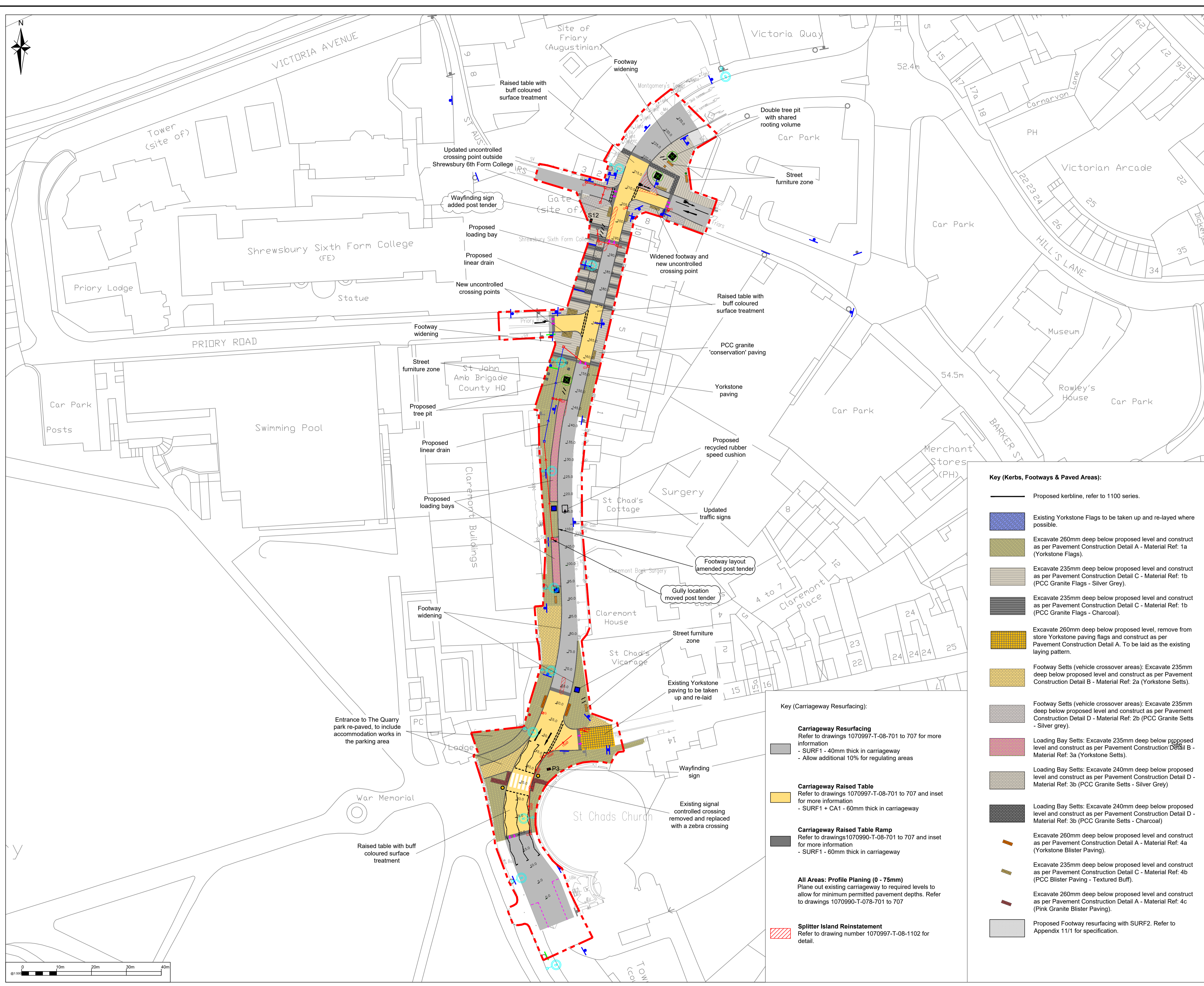


File name: G:\CONNECT\2015-18\1070997\SHREWSBURY\TIP\FB0303.DESIGNPACKAGE 2 - PUBLIC REALM\DRAWINGS\CONSTRUCTION\1070997-C-08-102 GENERAL ARRANGEMENTS.DWG, printed on 10 August 2018 15:47:46, by Bevan, Rhys



**DO NOT SCALE**

© Crown copyright and database rights 2018 OS 100049049. You are permitted to use this data solely to enable you to respond to, or interact with, the organisation that provided you with the data. You are not permitted to copy, sub-licence, distribute or sell any of this data to third parties in any form.

- Key: ( Proposed Drainage Features)**
- Proposed 150Ø PVC drain connection
  - Proposed linear drain system
  - Proposed gully or chamber
  - Proposed linear drain chamber including trap unit

- Key: (Traffic Signs & Road Markings)**
- + Proposed sign/post.
  - + Sign assembly to remain
  - Sign removed from store and re-erected
  - Proposed road marking
  - Internally illuminated flashing 'Belisha Beacon' with ELV LED lighting units. Diag. 4007.
  - Proposed recycled rubber speed cushions

- Key: (Street Lighting)**
- Proposed lighting unit or column

- Key (Wayfinding):**
- P3 Wayfinding units to be removed from clients store and installed
  - S12

- Key (Street Furniture):**
- Remove bench from store and install
  - Remove cube bench from store and install
  - Planter removed from employer's store and placed on site
  - Proposed bin
  - Proposed cycle stand

- Key (Landscaping):**
- Proposed tree pit and surround
- Site extents, Claremont Bank civil engineering works.

**Key (Kerbs, Footways & Paved Areas):**

- Proposed kerbline, refer to 1100 series.
- Existing Yorkstone Flags to be taken up and re-laid where possible.
- Excavate 260mm deep below proposed level and construct as per Pavement Construction Detail A - Material Ref: 1a (Yorkstone Flags).
- Excavate 235mm deep below proposed level and construct as per Pavement Construction Detail C - Material Ref: 1b (PCC Granite Flags - Silver Grey).
- Excavate 235mm deep below proposed level and construct as per Pavement Construction Detail C - Material Ref: 1b (PCC Granite Flags - Charcoal).
- Excavate 260mm deep below proposed level, remove from store Yorkstone paving flags and construct as per Pavement Construction Detail A. To be laid as the existing laying pattern.
- Footway Sets (vehicle crossover areas): Excavate 235mm deep below proposed level and construct as per Pavement Construction Detail B - Material Ref: 2a (Yorkstone Sets).
- Footway Sets (vehicle crossover areas): Excavate 235mm deep below proposed level and construct as per Pavement Construction Detail D - Material Ref: 2b (PCC Granite Sets - Silver grey).
- Loading Bay Sets: Excavate 235mm deep below proposed level and construct as per Pavement Construction Detail B - Material Ref: 3a (Yorkstone Sets).
- Loading Bay Sets: Excavate 240mm deep below proposed level and construct as per Pavement Construction Detail D - Material Ref: 3b (PCC Granite Sets - Silver Grey)
- Loading Bay Sets: Excavate 240mm deep below proposed level and construct as per Pavement Construction Detail D - Material Ref: 3b (PCC Granite Sets - Charcoal)
- Excavate 260mm deep below proposed level and construct as per Pavement Construction Detail A - Material Ref: 4a (Yorkstone Blister Paving).
- Excavate 235mm deep below proposed level and construct as per Pavement Construction Detail C - Material Ref: 4b (PCC Blister Paving - Textured Buff).
- Excavate 260mm deep below proposed level and construct as per Pavement Construction Detail A - Material Ref: 4c (Pink Granite Blister Paving).
- Proposed Footway resurfacing with SURF2. Refer to Appendix 11/1 for specification.

**Key (Carriageway Resurfacing):**

- Carriageway Resurfacing**  
Refer to drawings 1070997-T-08-701 to 707 for more information  
- SURF1 - 40mm thick in carriageway  
- Allow additional 10% for regulating areas
- Carriageway Raised Table**  
Refer to drawings 1070997-T-08-701 to 707 for more information  
- SURF1 + CA1 - 60mm thick in carriageway
- Carriageway Raised Table Ramp**  
Refer to drawings 1070997-T-08-701 to 707 for more information  
- SURF1 - 60mm thick in carriageway
- All Areas: Profile Planing (0 - 75mm)**  
Plane out existing carriageway to required levels to allow for minimum permitted pavement depths. Refer to drawings 1070990-T-078-701 to 707
- **Splitter Island Reinstatement**  
Refer to drawing number 1070997-T-08-1102 for detail.

DRAWING STATUS: **A - FIT FOR CONSTRUCTION**

**wsp**

2nd Floor Shirehall, Abbey Foregate, Shrewsbury, SY2 6ND, UK  
T+ 44 (0) 1743 501060  
wsp.com

**Shropshire Council**

SITE/PROJECT: **Shrewsbury Integrated Transport Package  
Town Centre Package 1**

TITLE: **Claremont Bank  
General Arrangement**

SCALE @ A1: 1:500	CHECKED: R.Harman	APPROVED: P.Field-Williams	
PROJECT NO: 1070997	DESIGNED: A.Keville	DRAWN: A.Keville	DATE: Aug 2018
DRAWING No: <b>1070997-C-08-102</b>			REV: -

© WSP UK Ltd