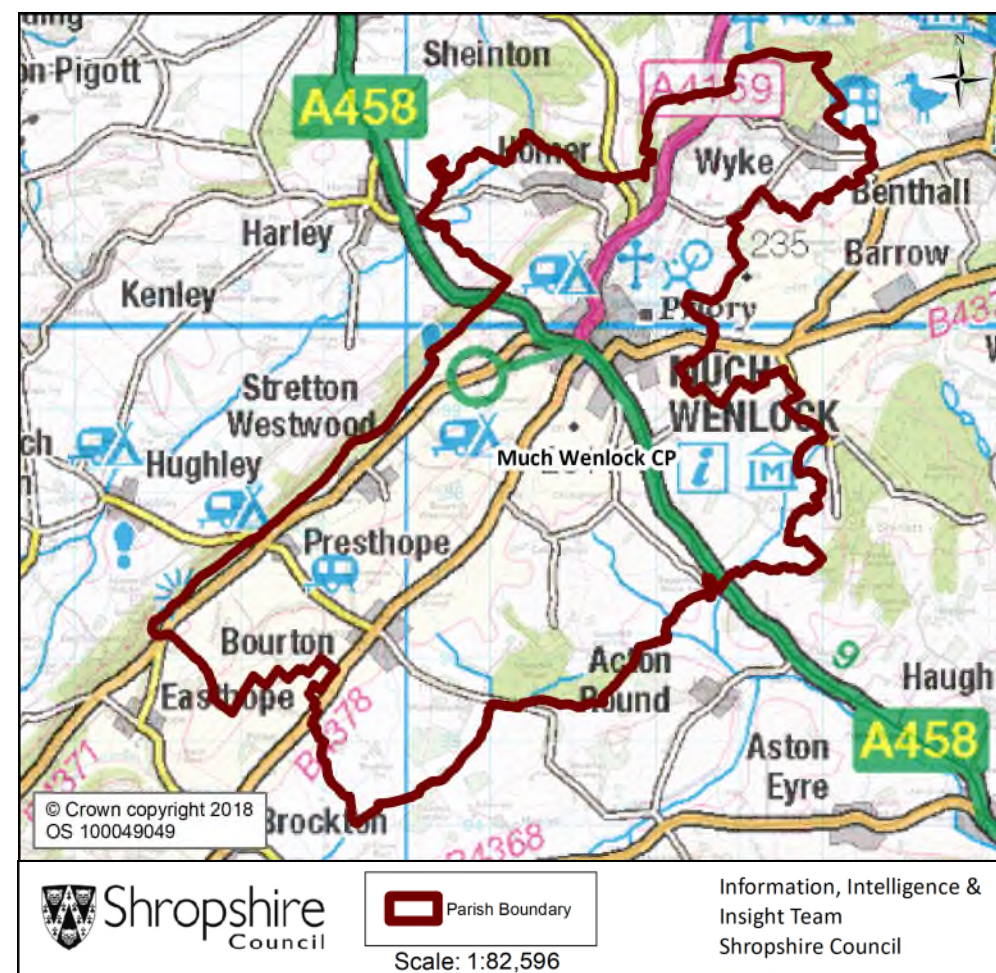


# Much Wenlock Parish

## Contents

Population	2
Health	4
Index of Multiple Deprivation	5
Housing	6
Unemployment and Labour Market	7

Key Facts:	Much Wenlock Parish
Area:	3,541.4 hectares
Population Density:	0.80 persons per hectare
Total Population	2,877 (1,354 males, 1,523 females)
Household Population:	2,812 (97.7%)
Households: Dwellings:	1,276 1,346
Communal Establishment no. / population	9 Communal Establishments 65 residents (2.3% of total population)



Source: 2011 Census, Office of National Statistics © Crown Copyright 2018

# Much Wenlock Parish

## Population Age Structure

Table: Population by five year age group (2011 Census)

	Total Population	% of Total Population			
		Much Wenlock	Shropshire	West Midlands	England
<b>All ages</b>	2,877	100.0	100.0	100.0	100.0
<b>0 – 4</b>	128	4.4	5.1	6.3	6.3
<b>5 – 9</b>	128	4.4	5.1	5.8	5.6
<b>10 – 14</b>	139	4.8	5.9	6.1	5.8
<b>15 – 19</b>	142	4.9	6.2	6.6	6.3
<b>20 – 24</b>	110	3.8	5.4	6.8	6.8
<b>25 – 29</b>	100	3.5	5.1	6.5	6.9
<b>30 – 34</b>	121	4.2	5.0	6.1	6.6
<b>35 – 39</b>	147	5.1	5.8	6.4	6.7
<b>40 – 44</b>	182	6.3	7.2	7.3	7.3
<b>45 – 49</b>	199	6.9	7.7	7.2	7.3
<b>50 – 54</b>	166	5.8	6.9	6.3	6.4
<b>55 – 59</b>	226	7.9	6.6	5.7	5.7
<b>60 – 64</b>	306	10.6	7.3	6.0	6.0
<b>65 – 69</b>	216	7.5	6.2	5.0	4.7
<b>70 – 74</b>	186	6.5	4.9	4.0	3.9
<b>75 – 79</b>	136	4.7	3.8	3.2	3.1
<b>80 – 84</b>	125	4.3	2.9	2.4	2.4
<b>85 – 89</b>	76	2.6	1.8	1.5	1.5
<b>90 Plus</b>	44	1.5	0.9	0.7	0.8

- Early years: 4.4% (128 children) of the population were aged 0 to 4 years in March 2011. This compares with 5.1% at County level, 6.3% regionally and 6.3% nationally.
- School age: 12.5% (361 children) of the population were aged 5 to 17 years in March 2011. This compares with 14.9% at County level, 15.8% regionally and 15.1% nationally.
- Working age: 55.8% (1605 people) of the population were aged 18 to 64 years in March 2011. This compares with 59.3% at County level, 61.0% regionally and 62.3% nationally.
- Retirement age: 27.2% (783 people) of the population were aged 65 and over in March 2011. This compares with 20.7% at County level, 16.9% regionally and 16.3% nationally.
- Over 85 year olds: 4.2% (120) of the population were aged 85 and over in March 2011. This compares with 2.7% at County level, 2.2% regionally and 2.2% nationally.

Source: 2011 Census, Office of National Statistics © Crown Copyright 2018

# Much Wenlock Parish

## Diversity

- The 2011 Census showed Much Wenlock Parish had a black and minority ethnic group population of 27 (0.94%). The largest broad ethnic group is 'Mixed' (within this the largest group is 'White and Asian'). For the first time the 2011 Census showed Much Wenlock Parish had a gypsy population of 2.
- When asked about their religion 31.9% (917 people) identified themselves as having no religion or did not state it on the form. The majority of people (67.2%) identified themselves as Christian and 0.9% (26 people) identified themselves as having an alternative religion.
- The 2011 Census showed that there were no residents who could not speak English well or at all.

## Car Ownership

- The 2011 Census showed that 169 households (13.2%) did not own a car and subsequently are reliant on other forms of transport such as public transport services. In total 1,839 cars are owned by households resident in the parish area.

*Source: 2011 Census, Office of National Statistics © Crown Copyright 2018*

# Much Wenlock Parish

## Health

*Source: 2011 Census, Office of National Statistics © Crown Copyright 2018*

### General Health

The 2011 Census asked three questions relating to health and the provision of unpaid care. The questions relate to whether people felt their general health was good, whether they looked after or gave help or support to other family members, friends, neighbours or others and lastly whether their day to day activities were limited because of a health problem or disability.

- At the time of the 2011 Census 45% of people in Much Wenlock said that they felt they were in “Very Good Health”, this compares to 46% for Shropshire as a whole.
- 1.2% reported that they were in “Very Bad Health”. This is slightly higher than the overall result for Shropshire (1%).

### Provision of Unpaid Care

- The question asked “do you look after, or give any help or support to family members, friends, neighbours or others because of either; a long term physical or mental ill health/disability? or because of problems related to old age?”
- At the time of the Census 9% said that they were providing 1 to 19 hours of unpaid care a week. This is slightly higher than the Shropshire figure of 7%.
- 1% said they provided between 20 and 49 hours per week unpaid care. This is in line with the Shropshire figure of 1%.
- 2% said they provided over 50 hours of unpaid care. This is in line with the figure for Shropshire as a whole (2%) and the figure for England & Wales (2%).

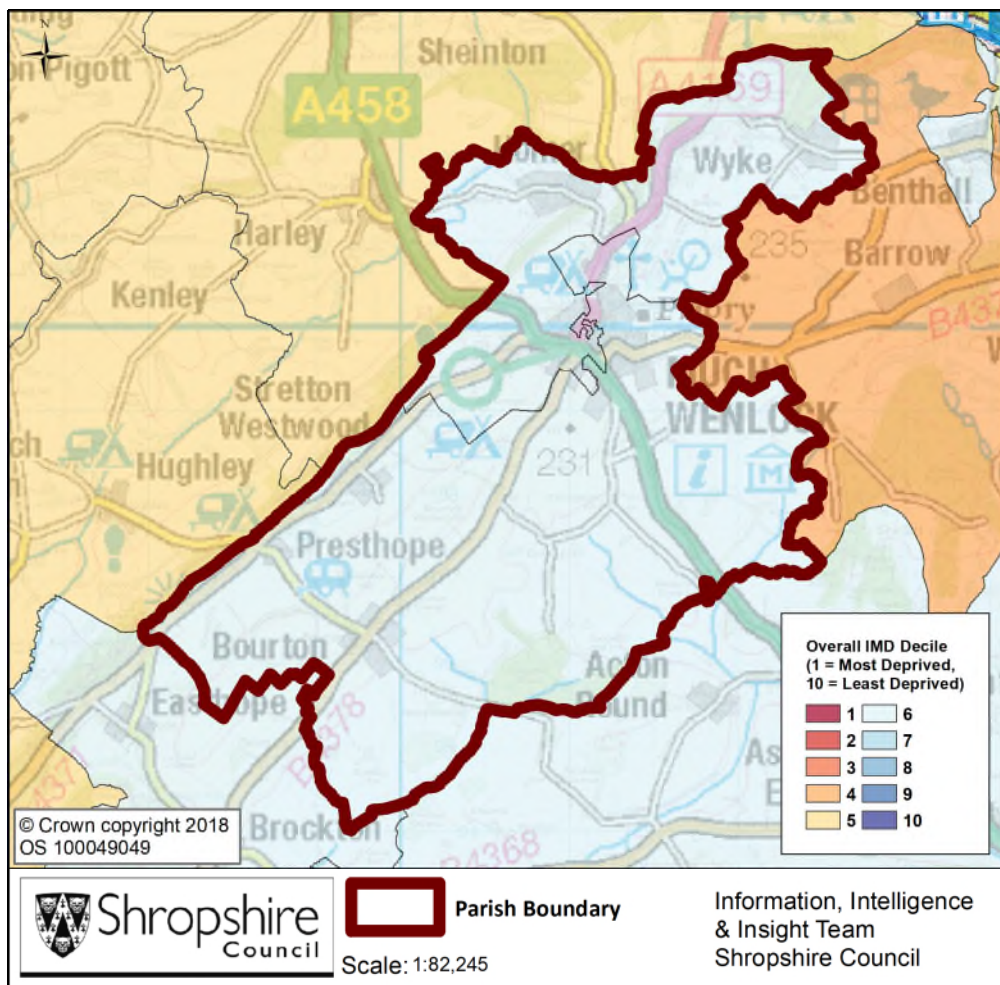
### Long Term Illness or Disability

The Census asked “Are your day-to-day activities limited a lot due to a health problem or disability which has lasted, or is expected to last, at least 12 months?”

- 8% said that their day-to-day activities limited a lot due to a health problem or disability. This is in line with the figure for Shropshire of 8%.
- The percentage who reported their day-to-day activities were limited a little was 12%. This is slightly higher than the figure of 10% for Shropshire as a whole.

# Much Wenlock Parish

## Index of Multiple Deprivation



The lower super output area that covers Much Wenlock Parish falls within Decile 6 nationally.

Decile 1 is the most deprived nationally and Decile 10 the least deprived nationally.

Source: IMD 2015, Department for Communities and Local Government, © Crown Copyright 2018.

# Much Wenlock Parish

## Housing

- There were 1276 households in Much Wenlock at the time of the 2011 Census.
- The parish had 2877 usual residents and covers an area of 3541 hectares.
- 543 households were owner occupiers (owned outright) equating to 42.6% of all households. There were 289 households (22.6%) who owned their home with a mortgage or loan.
- There were 185 households (14.5% of all households) that privately rented their home from a landlord. There were also 25 households (2.0% of all households) who privately rented from a landlord classified as 'Other'.
- 155 households were renting social housing from the Council totalling 12.1% of all households. There were also 53 households (4.2%) renting social housing from 'Other' sources.
- In Much Wenlock there were 616 detached dwellings representing 45.8% of all dwellings. There were also 331 semi-detached and 274 terraced dwellings equating to 24.6% and 20.4% respectively.
- 17.4% of all households were one person pensioner households.
- 22.7% of households in the area had dependent children. The number of married couple households with dependent children was 159 and the number of cohabiting couples with dependent children was 45.
- There were 62 lone parent households (with dependent children), which equates to 4.9% of all households.

*Source: 2011 Census, Office of National Statistics © Crown Copyright 2018*

# Much Wenlock Parish

## Unemployment and Labour Market

### Unemployment

- At the time of the Census, there were 71 residents who were unemployed but available for work. This is 3.4% of the 16-74 year old population, compared to 3.3% for Shropshire.
- 20 young people (aged 16-24) were unemployed, plus a further 21 who were 50 to 74.
- Long term unemployment is also an issue – 32.39% of all unemployed people were classed as long-term unemployed in 2011. This is the equivalent of 23 people.

### Labour Force

- 1385 Much Wenlock residents aged 16-74 are economically active.
- 35.1% of the Much Wenlock population has level 4 or above qualifications compared with 27.5% in Shropshire and 27.4% in England.
- The number with no formal qualifications at all stands at 545 people – at 22.3% of the population (aged over 16), this compares with the county average of 22.5%.
- 43.0% of the population work in standard occupation classifications 1-3 (managers, directors and senior officials, professional, associate professional and technical) and 16.8% work in standard occupation classifications 8 and 9 (process, plant and machine operatives and elementary occupations).

### Travel to Work (Census 2011)

- 15.3% of the population in Much Wenlock are self-employed, and 6.4% work from home compared with 5.6% for Shropshire.
- The car is used as the main means of travel to work for 46.2%, while 1.1% use public transport.

*Source: 2011 Census, Office of National Statistics © Crown Copyright 2018*