

Shrewsbury Pool Consultation Analysis

WHO WAS CONSULTED?



1924 Survey respondents
From 12 postcodes



14.3% of respondents are members of a swimming club
57% of respondents swim regularly



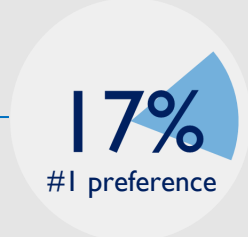
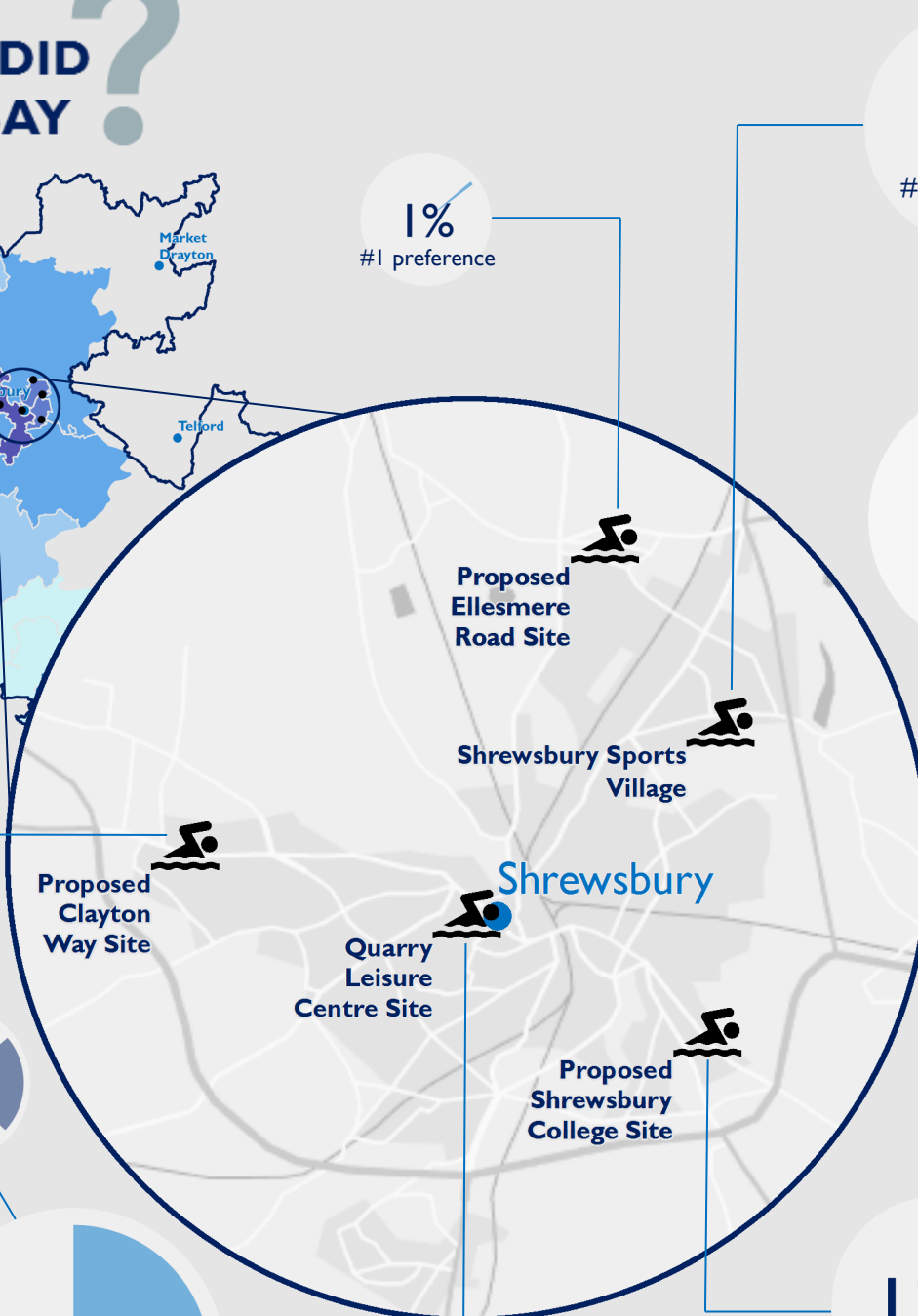
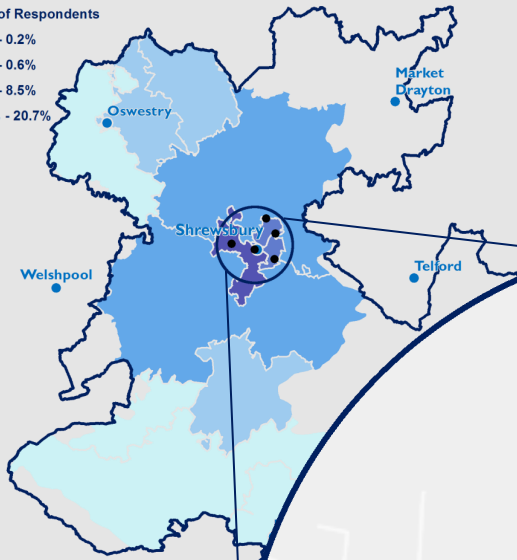
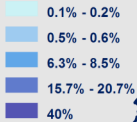
55% Female and 42% Male respondents
3% either preferred not to say or were transgender



Consultations were also undertaken with key stakeholders and groups

WHAT DID THEY SAY?

Percentage of Respondents



✓ Learn to swim facilities and ✓ A varied swimming timetable were identified as the most important factors for facility mix within the leisure centre

