

Sensory Inclusion Service Hearing Impairment Newsletter

Issue
41
December 2023

Sensory Inclusion Service, Floor 6, Darby House, Lawn Central, Telford, TF3 4JA

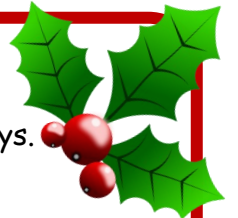
Christmas Cover

There is a Teacher of the Deaf on duty every week of the Christmas holidays.

Call 01952 385269 for support.

Mark Rutter (Hearing Aid Technician) is on duty for some of the time.

Call 01952 385269.



Batteries and Tubing: a reminder about how to access these

You can also order batteries and tubing online, via the link below:

<https://www.sath.nhs.uk/wards-services/az-services/audiology/battery/>



Thank you to Maeve for sending in this wonderful picture. Wishing you all a Merry Christmas and a Happy New Year.

Contact details



Have your contact details changed?
You might be missing out on some fantastic opportunities for your family!

If you have changed your email or phone number, please let us know at

SENDandInclusion@telford.gov.uk



Tom has trained at BMMA (British Military Martial Arts) since three years old. He achieved his black belt in January 2023.

Tom competed in Hull at the ICO World Combat Sports Martial Arts Championships 2023 in October and achieved two ICO World Champion Titles. Well done Tom!



Jordan has had a fantastic transition from his secondary school in Staffordshire to Telford College! He has started a Princes Trust course with such enthusiasm and is embracing all aspects of college life, both academic and social. Jordan has made huge strides already in his confidence, joining clubs, becoming an independent learner and is exploring opportunities for further study in Art. He is a fantastic role model for our younger students. We are so proud of his approach and attitude to learning in this new environment, and can't wait to see where his positive start in further education leads.



Ray enjoys a variety of activities in his leisure time. He is a keen 'Telford Tigers' supporter and attends many games to support them. He also enjoys playing cricket. He was presented with a trophy this year for 'most improved player'.

In school, he has gained so much confidence and he has made a very smooth transition to year 5. He independently manages his own audiological equipment. He has enjoyed the theme in class about Space. He has acquired so many facts about Space which he loves to talk about. Well done Ray for all of your achievements.



Our Hearing Aid Technician, Mark recently celebrated a very special birthday. We couldn't let it pass without letting everyone know!

Arafat meets the Queen

Arafat attended a festive gathering at Clarence House with his mum and his Roald Dahl Nurse Janice, who works at the Princess Royal Hospital in Telford.

The visit was arranged through Roald Dahl's Marvellous Children's Charity, of which Her Majesty The Queen is the Royal Patron.

Roald Dahl's Marvellous Children's Charity provides specialist nurses and support for seriously ill children and Yasir was one of the children supported by Roald Dahl Nurse Specialists invited to help The Queen to decorate the Christmas tree at Clarence House. The children also enjoyed a surprise visit from Father Christmas and his reindeer, and there was a wonderful performance by The Band and Bugles of The Rifles.

Yasir suffers with sickle cell disorder and has overcome pneumococcal meningitis, which he experienced at only 18 months old. After a month in intensive care, Yasir recovered from the meningitis and has learned to walk again, however the illness has left him profoundly deaf. He now communicates through sign language and has ongoing physiotherapy for his mobility.



Fundraising

A huge thank you to Kate who applied for a grant through her employer, Persimmon. Every month the company encourage employees to nominate a charity to receive £500. Here is SDCS Chairman Ian Barratt collecting the cheque from Kate. This money will be used to fund equipment at Family Group, where Kate's son, Alfie attended.

Community Access Pass

Would you be interested in visiting Attingham Park with your family?
Sensory Inclusion Service have access to a Community Pass and are able to get you booked in.
Please email me

nichola.clark@telford.gov.uk

for more information.

Attingham Park 2023

VI and HI were delighted to join together to offer families a chance to visit Attingham. The summer event saw us playing traditional games on the lawn.



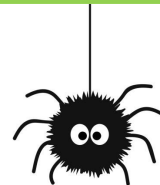
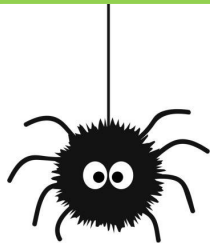
We enjoyed a Winter Walk, spotting trees that had been decorated as Traditional Tales. We have already started planning for our next visit!

Christmas Pantomime

A great time was had by all who attended the pantomime at Theatre Severn, Shrewsbury. It was a signed performance of Jack and the Beanstalk.

A huge Thank You to SDCS who again, funded the event.





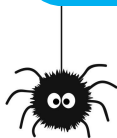
Haughmond Hill Spooky Sponsored Walk

A huge thank you to the families that joined us for our sponsored walk.

A grand total of

£1727.50

was raised.



Fancy dress winners

There were some fabulous costumes, it was very tricky to decide.

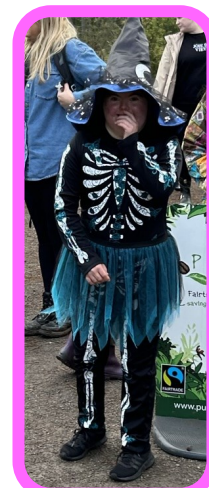
The winners were...



Noah



Bea

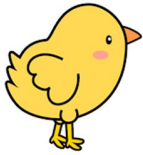


Olivia

They will all receive a £10 Book token.

Sensory Inclusion Service Family Group

SIS (HI) Family Group takes place every Thursday during term time for hearing impaired pre-school children and their families.



Families can arrive anytime between 9.30 am – 11.30 am.



January 2024

11th Visit from Library service
18th Recycled crafts
25th Bird crafts

February 2024

1st Rainbow crafts
8th Chinese new year crafts
15th **Half Term**

22nd IASS - Talk
29th Leap day crafts

March 2024

7th Mother's Day crafts
14th Nikki Coombes - Talk
21st Spring crafts

28th March **Easter holidays**
4th April **Easter Holidays**

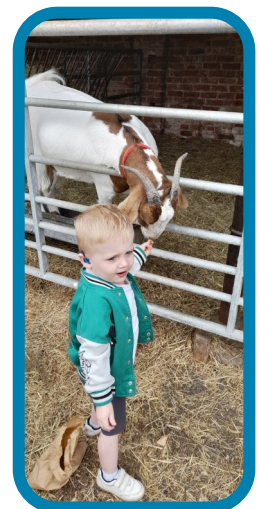
The Stepping Stones Centre, Brunel Road, Malinslee, TF3 2BF

Sat Nav TF3 2HZ

If you have not attended Family Group recently, or if you are interested in attending for the first time, then please get in touch. It is a chance to meet other families, have a coffee, for the children to play and to engage in art and craft activities.

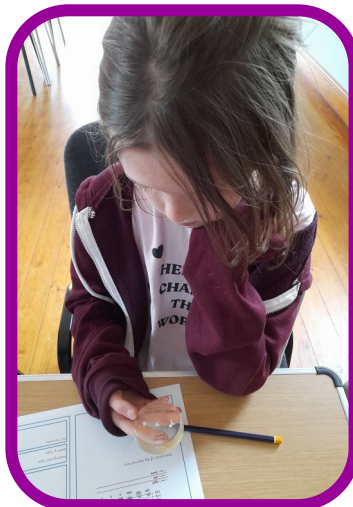
Mark Rutter also attends to check hearing devices.

If you are interested in attending, contact Nichola Clark on 07581035047 or nichola.clark@telford.gov.uk



Looking back at 2023

What a jam packed year it's been! Let's take a look at some of the highlights of 2023.



From football to the Family Fun Day. A spooky walk and a visit to Santa. There are many events that I look back on from 2023 with a smile! I would like to say a huge thank you to the Shopshire Deaf Children's Society committee for all of their hard work again this year. There is a huge amount of planning that goes on behind the scenes to ensure that these events run smoothly. The planning has already started for 2024 so keep a look out in your emails to ensure that you don't miss out on the fun! Remember to check your junk!

Have a wonderful Christmas and New Year from the team at Sensory Inclusion Service.

Sensory Inclusion Service, Floor 6, Darby House, Lawn Central, Telford. TF3 4JA

Winter Wordsearch



n e t s i l g s j u m p e r c
 h s n o w a c k n h c f g h l
 w l e g p f h i n o e o i c s
 o e n l r g i c l t o l a v n
 e d s o c s l e a c l r f t o
 e g z v r s l u i h a t j f w
 s e p e l c y f r o s t y h f
 n p l s k a t e a c a m e i l
 o r w f c r e s t o o b n b a
 w e h b t f r o b l a n k e k
 m i i f i r e p l a c e c r e
 a g t e n r g i e t n b o n p
 n p e h u w i n t e r z k a e
 e j m n e n o c e n i p i t n
 g i n g e r b r e a d e b e r

pinecone
 glisten
 snowman
 ice
 snow
 sledge
 hot chocolate
 hat
 frozen
 jumper
 blanket
 hibernate
 chilly
 boots
 coat
 snowflake
 winter
 gloves
 gingerbread
 frosty
 skate
 scarf
 fireplace
 white

Local Offer for Special Educational Needs and Disability

Discover everything you need to know about education, health and care services in your local area for children and young people with SEND 0-25yrs at...

www.telfordsend.org.uk



Key features...

- Search for clear and accessible information, advice and sources of support.
- Explore leisure, fun and short breaks activities.
- Find out about specialist services and education health and care plans.
- Learn how schools support special educational needs.
- Use the interactive map showing what is available near to where you live.
- Have your say through our online feedback form.



www.telfordsend.org.uk

Need this in large print or Braille?

If you would like to receive this newsletter in Large Print or Braille, please email

sendandinclusion@telford.gov.uk



[Shropshire's SEND Local Offer](#) is a single place for information and services for children and young people with special education needs and/or disabilities, their families and the practitioners who support them.

Take a look at the [SEND Family directory](#) for local events, groups and things to do. For news and updates please like and follow us on [Facebook](#) and [Twitter](#).

Email: Local.Offer@shropshire.gov.uk Telephone: 0345 678 9063

Sensory Inclusion Service, Floor 6, Darby House, Lawn Central, Telford. TF3 4JA