

Shropshire Sectors

Produced by the Information, Intelligence and Insight Team

November, 2018

Top Shropshire Sectors

The key business sectors in Shropshire reflect the county’s rurality, natural environment and ageing population. Land-based industries, health (including care), retail and tourism represent important sectors for the county, and Shropshire also supports a strong food and drink industry. Micro businesses dominate, but Shropshire is also home to a number of large and successful international businesses.

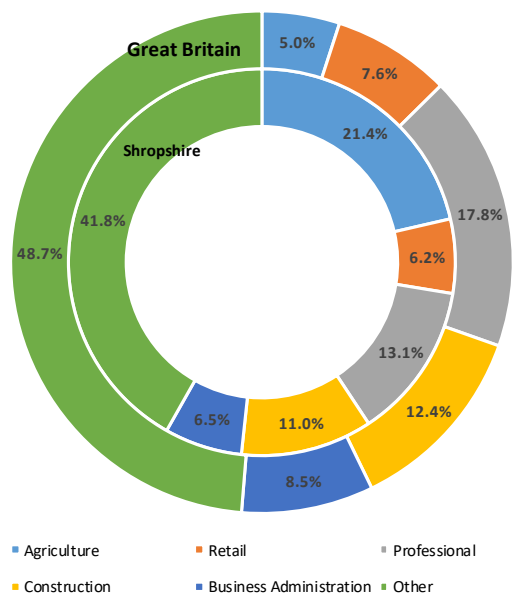
The top five employment sectors account for more than 47% of overall employment in Shropshire in 2017. Health is the largest, absorbing 15.6% of jobs, ahead of manufacturing with 9.6% and retail, also with 9.6%. Education and accommodation and food services each accounted for 8.8% of employment.

In terms of the number of businesses operating, the highest proportion are categorised as agriculture, forestry & fishing, accounting for more than a fifth of the total. Professional, scientific and technical and construction represent the second and third largest sectors by business numbers.

Sector categories for GVA¹ are relatively broad, with distribution (retail and wholesale), transport and accommodation and food accounting for 21.5% of all GVA generated in Shropshire in 2016. Other major contributors to Shropshire’s GVA include public services (administration, education and health) and real estate activities.

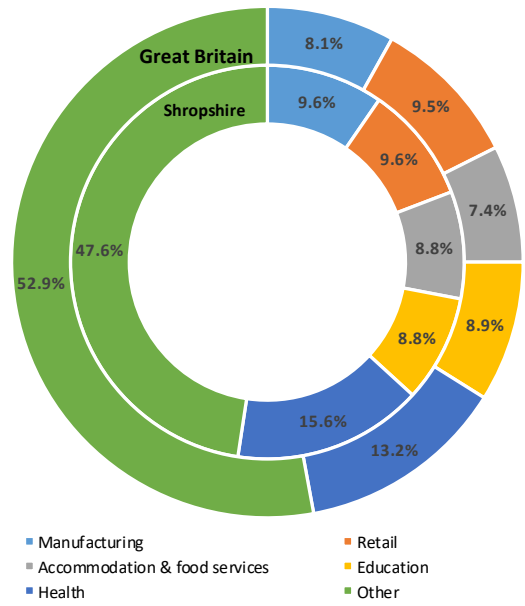
The following charts show how Shropshire’s sector breakdown compares with the national average.

Top Five Sectors by Number of Businesses, 2018



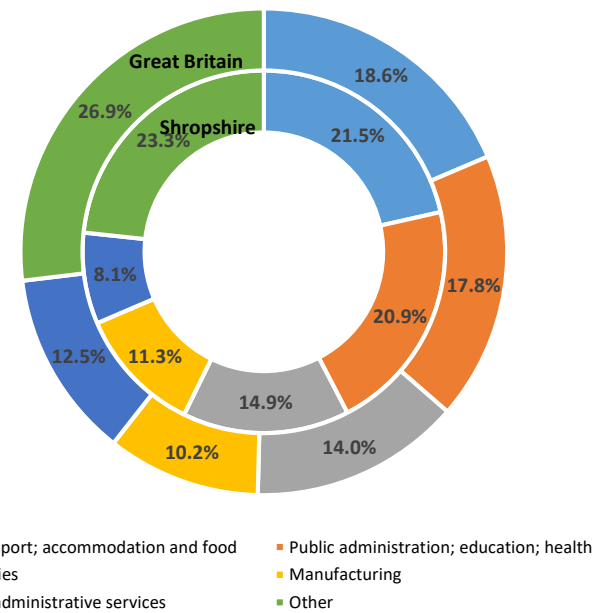
Source: Inter-Departmental Business Register, 2018 © Crown Copyright Office for National Statistics, 2018

Top Five Employment Sectors, 2017



Source: Business Register of Employment Survey, 2017 © Crown Copyright Office for National Statistics, 2018

Top Five Sectors by GVA Generation, 2016



Source: Regional Gross Value Added, 2016 © Crown Copyright Office for National Statistics, 2018

Note: ¹ GVA is a means of measuring the contribution to the economy made by producers or sectors. It is the difference between the value of goods and services produced and the cost of raw materials and other inputs which are used in production.

Business Counts

The total number of enterprises in Shropshire in 2017 was 15,710, up by 0.4%, or 60 businesses over the previous year. Since 2010, the number of enterprises has risen by 1,570, which is the equivalent of an 11% increase.

There are more than 3,300 businesses in the agriculture sector, more than 2,000 professional, scientific and technical businesses and more than 1,000 in construction and business administration and support services.

The number of public administration and defence organisations rose substantially post 2011 when the sector started to become much more fragmented but has been stable at 105 since 2016.

Other sectors which have grown substantially since 2010 in terms of business numbers include mining, quarrying and utilities (+40%), information and communication (+23%), property (+24%), professional scientific and technical (+40%), education (+19%) and health (+19%).

The number of retail, wholesale and transportation businesses has declined.

Industry	Number of businesses										
	2010	2011	2012	2013	2014	2015	2016	2017	2018	<i>Change 2010-2018</i>	<i>% change 2010-2018</i>
Agriculture, forestry & fishing	3,005	3,065	3,060	3,225	3,260	3,295	3,330	3,330	3,365	<i>360</i>	<i>12.0%</i>
Mining, quarrying & utilities	50	55	55	60	60	60	65	65	70	<i>20</i>	<i>40.0%</i>
Manufacturing	760	745	760	760	740	785	810	810	820	<i>60</i>	<i>7.9%</i>
Construction	1,680	1,580	1,515	1,510	1,520	1,595	1,630	1,680	1,730	<i>50</i>	<i>3.0%</i>
Motor trades	500	490	505	490	490	515	515	505	515	<i>15</i>	<i>3.0%</i>
Wholesale	685	675	665	660	650	650	655	670	650	<i>-35</i>	<i>-5.1%</i>
Retail	1,085	1,060	1,055	1,020	1,025	1,005	980	975	975	<i>-110</i>	<i>-10.1%</i>
Transport & storage (inc postal)	480	470	450	440	435	445	450	460	435	<i>-45</i>	<i>-9.4%</i>
Accommodation & food services	840	840	850	840	840	945	950	940	960	<i>120</i>	<i>14.3%</i>
Information & communication	525	520	545	545	565	600	625	640	645	<i>120</i>	<i>22.9%</i>
Financial & insurance	195	190	190	170	160	180	185	185	210	<i>15</i>	<i>7.7%</i>
Property	425	435	435	450	480	495	500	510	525	<i>100</i>	<i>23.5%</i>
Professional, scientific & technical	1,470	1,495	1,590	1,665	1,760	1,900	2,000	2,070	2,060	<i>590</i>	<i>40.1%</i>
Business administration & support services	985	900	890	840	885	1,030	1,040	1,030	1,020	<i>35</i>	<i>3.6%</i>
Public administration & defence	35	35	55	80	90	100	105	105	105	<i>70</i>	<i>200.0%</i>
Education	180	180	190	190	190	205	210	240	215	<i>35</i>	<i>19.4%</i>
Health	450	460	465	465	505	530	550	575	535	<i>85</i>	<i>18.9%</i>
Arts, entertainment, recreation & other services	795	780	795	775	770	870	885	865	875	<i>80</i>	<i>10.1%</i>
Total	14,140	13,975	14,065	14,180	14,420	15,210	15,480	15,650	15,710	<i>1,570</i>	<i>11.1%</i>

Source: Inter-Departmental Business Register, 2018 © Crown Copyright Office for National Statistics, 2018

Employment

There were 125,000 employee jobs in Shropshire in 2017, which represents a rise of 10,000 jobs (+8.7%) compared with 2010. The number of jobs was relatively stable between 2010 and 2013 but since then has risen by 2,000 jobs in 2014, by 500 jobs in 2015, by 4,500 jobs in 2016 and by 2,500 jobs in 2017.

The fastest growing sectors in Shropshire in terms of job growth in 2017 were:

- Property (+1,125 jobs)
- Professional and scientific (+1,000 jobs)
- Accommodation and food services (+1,000 jobs)
- Construction (+500 jobs)
- Motor trades (+500 jobs)

In contrast, substantial job losses were sustained in transport and storage (-750), retail (-500), business administration (-500), health (-500), arts, recreation and leisure (-500) and public administration (-2500).

Over the seven year period to 2017, the fastest growing sectors were:

- Professional and scientific: +150%
- Property: +120%
- Accommodation and food services: +47%

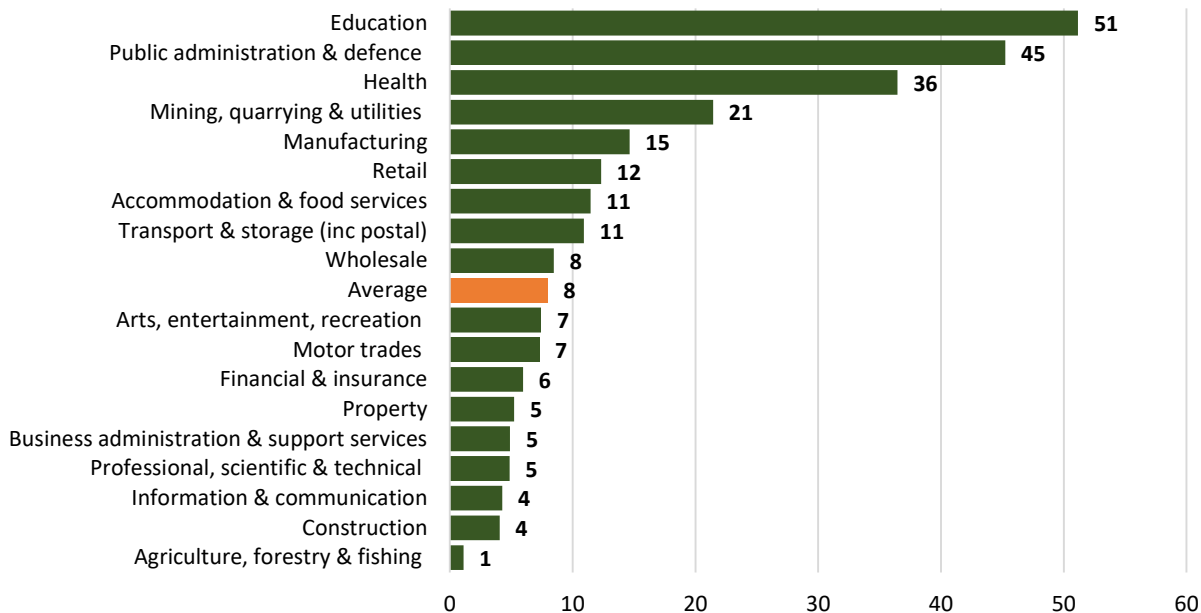
The total number of jobs in Shropshire – including employees, the self-employed, government supported trainees and HM forces - stood at an estimated 151,000 in 2016.

	Number of Jobs									
	2010	2011	2012	2013	2014	2015	2016	2017	Change 2010-2017	% change 2010-2017
Agriculture, forestry & fishing	3,500	3,500	3,750	3,250	3,500	4,000	3,500	3,750	250	7.1%
Mining, quarrying & utilities	1,250	1,750	2,250	1,500	1,875	1,500	1,125	1,500	250	20.0%
Manufacturing	13,000	12,500	11,500	11,500	12,000	11,500	12,000	12,000	-1,000	-7.7%
Construction	6,000	6,000	5,500	6,500	6,000	8,000	6,500	7,000	1,000	16.7%
Motor trades	3,000	3,000	3,250	2,750	3,250	3,000	3,250	3,750	750	25.0%
Wholesale	5,000	4,500	5,000	5,000	6,000	5,500	5,500	5,500	500	10.0%
Retail	13,000	12,500	12,500	12,000	13,000	12,000	12,500	12,000	-1,000	-7.7%
Transport & storage (inc postal)	4,500	4,250	5,000	4,250	4,750	5,500	5,500	4,750	250	5.6%
Accommodation & food services	7,500	7,500	8,500	7,500	8,500	9,000	10,000	11,000	3,500	46.7%
Information & communication	3,000	2,250	2,250	2,250	2,500	2,375	2,500	2,750	-250	-8.3%
Financial & insurance	2,000	1,750	1,250	1,375	1,000	1,375	1,125	1,250	-750	-37.5%
Property	1,250	1,625	2,000	2,000	2,000	1,875	1,625	2,750	1,500	120.0%
Professional, scientific & technical	4,000	5,500	6,000	6,000	5,500	7,500	9,000	10,000	6,000	150.0%
Business administration & support services	5,500	5,500	5,000	5,500	5,500	5,500	5,500	5,000	-500	-9.1%
Public administration & defence	6,500	6,000	5,500	5,500	4,750	5,000	5,000	4,750	-1,750	-26.9%
Education	11,000	10,500	12,000	12,000	11,500	11,500	11,000	11,000	0	0.0%
Health	19,000	19,500	20,000	20,500	20,500	17,000	20,000	19,500	500	2.6%
Arts, entertainment, recreation & other services	5,500	6,500	5,500	6,000	5,000	6,000	7,000	6,500	1,000	18.2%
Total	115,000	114,500	116,500	115,500	117,500	118,000	122,500	125,000	10,000	8.7%

Source: Business Register of Employment Survey, 2017 © Crown Copyright Office for National Statistics, 2018

Note: Excludes sole traders and HMO Armed forces

Average Number of Employees per Enterprise by Sector, 2017/18



Source: Business Register and Employment Survey, 2016/Inter-departmental Business Register, 2017 © Crown Copyright 2018, Office for National Statistics

The relative importance of sectors to Shropshire’s economy can also be analysed according to their location quotient (the relative importance of a sector compared with the national average). It is evident that agriculture, motor trades, and property supply notably more employment in Shropshire compared with the national average. Manufacturing, construction, wholesale, accommodation and food services, health and arts, entertainment and leisure all have above average representation, while employment in education, retail and professional services are broadly in line with the national average.

In contrast, sectors which are under-represented in Shropshire include mining, quarrying and utilities, transport and storage, information and communication, financial and insurance, and business administration and support.

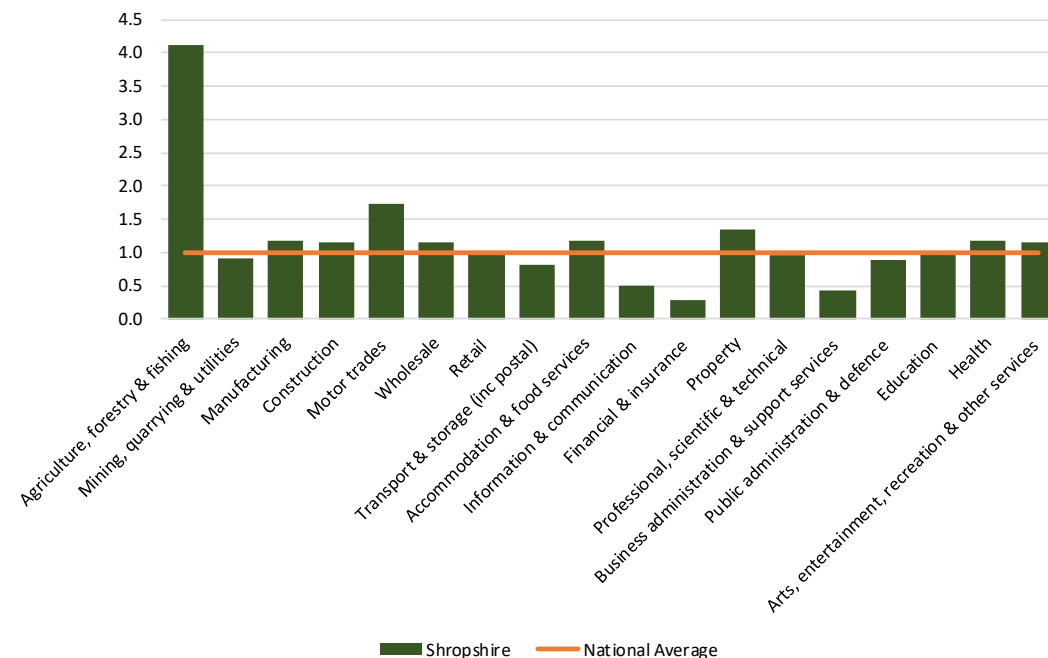
The average number of employees per business in Shropshire was eight in 2017/18. This compares with an average of 11 nationally.

Public service organisations tend to be considerably larger than private sector employers. Public administration and defence organisations employed an average of 45 in 2017/18, while education providers employed an average of 51 and health organisations 36.

Businesses in the mining, quarrying and utilities, manufacturing, retail, transport & storage, accommodation and food services and wholesale sectors are also larger than average.

At the other end of the scale, businesses in agriculture, property, construction, information and communication and professional, scientific & technical sectors employ fewer than five people each on average.

Relative Importance of Employment Sectors Compared to National Average, 2017



Source: Business Register and Employment Survey, 2017 © Crown Copyright 2018, Office for National Statistics