

Gobowen Village Profile - 2018

Gobowen is a large village in the north of Shropshire, 3 miles from the town of Oswestry. The area is part of Selattyn and Gobowen Parish Council. The village lies off the main A5 road.

The village grew up around coal mining and the area was part of the North Shropshire Coalfield. The word "Gob" is an old Welsh word for mine and Owen is believed to be the owner of a mine in the area hence the name Gobowen. The population also grew up around the railway line and Station where the main Shrewsbury to Chester railway runs through the village.

The village is home to the Robert Jones and Agnes Hunt Orthopaedic Hospital famous for its pioneering medical advances.. The village also has Derwen College a residential education centre for students with learning disabilities.

Gobowen has a pub, church and a local shops including small supermarket .

| Key Facts and Geography | |
|-------------------------|------------------------------|
| Area: | 64.5hectares |
| Population Density: | 28.3 persons per hectare |
| Total Population | 3,270 49% male 51%, female%) |
| Households: | 1,264 |
| Dwellings: | 1,317 |
| Communal Establishment | 6 |

Source: 2011 Census



The local school is Gobowen Primary School and the nearest secondary school is St Martin's School.

[View a map of schools in Shropshire](#)

Contents Page

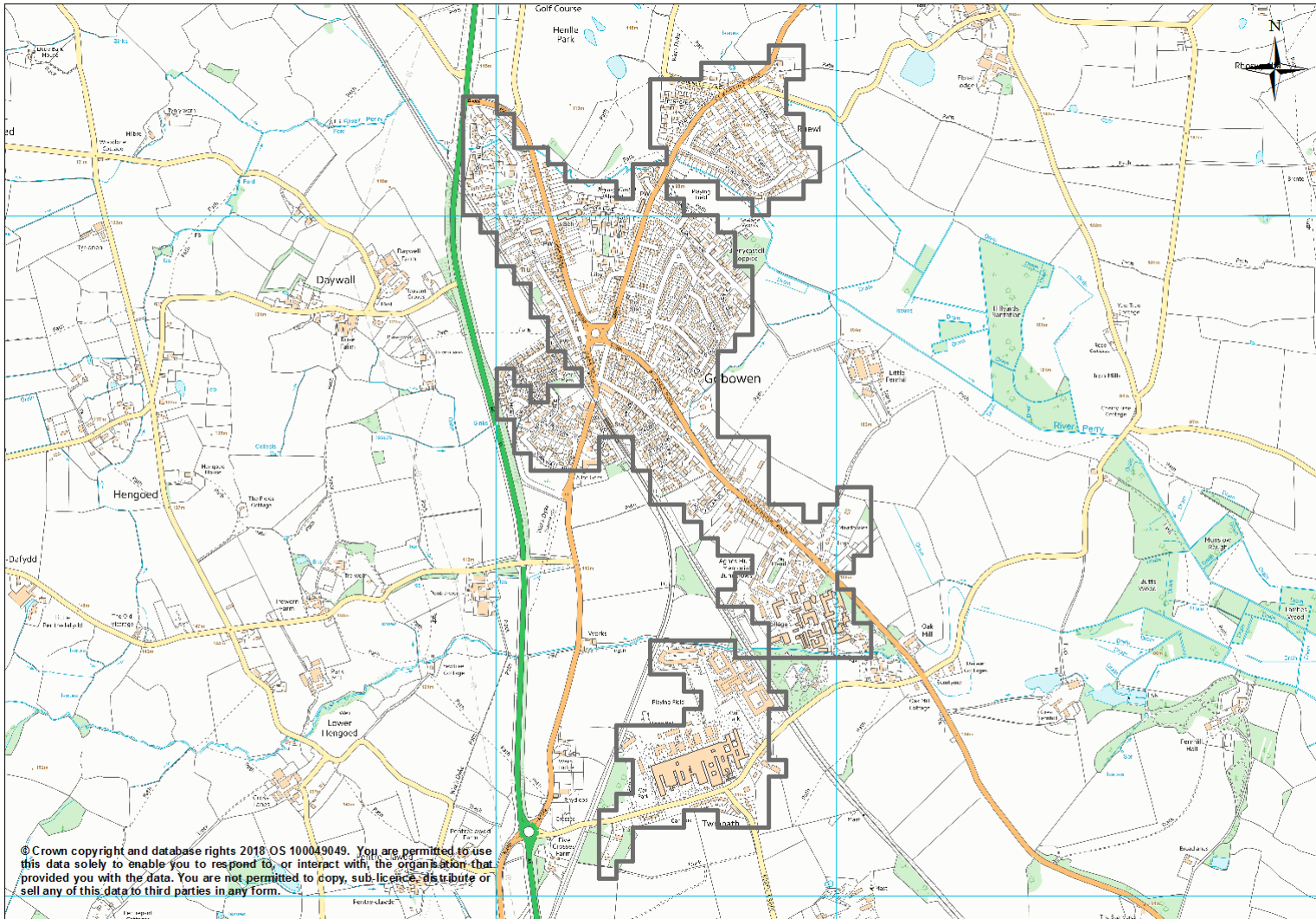
| | |
|---------------|----|
| Location Maps | 3 |
| Demographics | 4 |
| Economy | 11 |
| Health | 14 |
| Housing | 17 |

This Profile uses the Office for National Statistics (ONS) Built up Area (BUA) geography which is available for the 2011 Census results. For further information visit <https://www.ons.gov.uk/methodology/geography/ukgeographies/censusgeography>

These Profiles have been completed for large Shropshire villages over 1,000 population (15 in total) as at the 2011 Census. The profiles follow on from a suite of Market Town Profiles for Shropshire and Ward Profiles for Shropshire.

<https://www.shropshire.gov.uk/information-intelligence-and-insight/facts-and-figures/area-profiles/>

Location Maps



To view the Google Aerial Map please select the following link—[Aerial Map](#)

Demographics

Population of Large Villages

| Village | All usual residents | Males | Females | Lives in a household | Lives in a communal establishment | Area (Hectares) | Density (number of persons per hectare) |
|-------------------|---------------------|-------------------|-------------------|----------------------|-----------------------------------|----------------------|---|
| Alveley | 1,578 | 771 | 807 | 1,578 | 0 | 64.50 | 24.5 |
| Baschurch | 1,595 | 763 | 832 | 1,570 | 25 | 66.75 | 23.9 |
| Bayston Hill | 5,079 | 2,488 | 2,591 | 5,020 | 59 | 132.00 | 38.5 |
| Bomere Heath | 1,254 | 609 | 645 | 1,249 | 5 | 45.00 | 27.9 |
| Gobowen | 3,270 | 1,594 | 1,676 | 2,914 | 356 | 115.75 | 28.3 |
| Hanwood | 1,090 | 527 | 563 | 1,085 | 5 | 44.25 | 24.6 |
| Minsterley | 1,532 | 762 | 770 | 1,532 | 0 | 57.00 | 26.9 |
| Pant | 1,998 | 978 | 1,020 | 1,992 | 6 | 122.00 | 16.4 |
| Pontesbury | 1,873 | 908 | 965 | 1,852 | 21 | 80.75 | 23.2 |
| Prees | 939 | 466 | 473 | 939 | 0 | 59.50 | 15.8 |
| Ruyton-XI-Towns | 1,040 | 542 | 498 | 906 | 134 | 47.75 | 21.8 |
| Shawbury | 2,317 | 1,222 | 1,095 | 2,052 | 265 | 167.75 | 13.8 |
| St Martin's | 2,471 | 1,224 | 1,247 | 2,460 | 11 | 75.50 | 32.7 |
| Weston Rhyn | 2,502 | 1,131 | 1,371 | 2,287 | 215 | 93.00 | 26.9 |
| Whittington | 1,481 | 717 | 764 | 1,471 | 10 | 56.75 | 26.1 |
| Total | 30,019 | 14,702 | 15,317 | 28,907 | 1,112 | 1,228.25 | 24.4 |
| Shropshire | 306,129 | 151,606 | 154,523 | 298,183 | 7,946 | 319,730 | 1.0 |
| England | 53,012,456 | 26,069,148 | 26,943,308 | 52,059,931 | 952,525 | 13,027,842.85 | 4.1 |

Source: 2011 Census

Information, Intelligence & Insight Team

Phone: 0345 678 9000, Email: commissioning.support@shropshire.gov.uk

Demographics

Age Structure

| Age | Gobowen | Percentage | Shropshire percentage | England Percentage |
|---------------------|---------|------------|-----------------------|--------------------|
| All usual residents | 3,270 | 100% | 100% | 100% |
| Age 0 to 4 | 155 | 5% | 5% | 6.3% |
| Age 5 to 7 | 87 | 3% | 3% | 3.4% |
| Age 8 to 9 | 56 | 2% | 2% | 2.2% |
| Age 10 to 14 | 158 | 7% | 6% | 5.8% |
| Age 15 | 33 | 2% | 1% | 1.2% |
| Age 16 to 17 | 82 | 6% | 3% | 2.5% |
| Age 18 to 19 | 118 | 3% | 2% | 2.6% |
| Age 20 to 24 | 333 | 5% | 5% | 6.8% |
| Age 25 to 29 | 156 | 5% | 5% | 6.9% |
| Age 30 to 44 | 548 | 17% | 17% | 20.6% |
| Age 45 to 59 | 637 | 20% | 21% | 19.4% |
| Age 60 to 64 | 211 | 7% | 7% | 6.0% |
| Age 65 to 74 | 334 | 10% | 12% | 8.6% |
| Age 75 to 84 | 226 | 5% | 7% | 5.5% |
| Age 85 to 89 | 88 | 1% | 2% | 1.5% |
| Age 90 and over | 48 | 0% | 1% | 0.8% |
| Mean Age | 42.4 | 100% | 100% | 39.3 |

Source: 2011 Census

Demographics

Ethnicity

| Village | White | White British | Mixed/multiple ethnic groups | Asian/Asian British | Black/African/Caribbean/Black British | Other ethnic group |
|------------------------------|-------------|---------------|------------------------------|---------------------|---------------------------------------|--------------------|
| Alveley BUA | 99.6 | 98.1 | 0.1 | 0.1 | 0.1 | 0.0 |
| Baschurch BUA | 99.0 | 97.1 | 0.7 | 0.2 | 0.1 | 0.0 |
| Bayston Hill BUA | 99.0 | 96.9 | 0.4 | 0.5 | 0.1 | 0.0 |
| Bomere Heath BUA | 98.6 | 96.5 | 0.7 | 0.6 | 0.2 | 0.0 |
| Gobowen BUA | 98.0 | 96.7 | 0.5 | 1.3 | 0.1 | 0.1 |
| Hanwood BUA | 97.9 | 96.3 | 0.8 | 0.9 | 0.0 | 0.4 |
| Minsterley BUA | 97.9 | 95.0 | 0.1 | 1.7 | 0.3 | 0.1 |
| Pant BUA | 99.3 | 97.1 | 0.2 | 0.5 | 0.0 | 0.0 |
| Pontesbury BUA | 99.1 | 97.2 | 0.2 | 0.7 | 0.0 | 0.0 |
| Prees BUA | 98.8 | 94.9 | 0.4 | 0.5 | 0.2 | 0.0 |
| Ruyton-XI-Towns BUA | 99.0 | 96.8 | 0.4 | 0.6 | 0.0 | 0.0 |
| Shawbury BUA | 98.1 | 96.3 | 0.7 | 0.9 | 0.2 | 0.0 |
| St Martin's BUA | 98.6 | 96.7 | 0.4 | 0.6 | 0.1 | 0.2 |
| Weston Rhyn BUA | 97.3 | 95.5 | 0.7 | 1.9 | 0.1 | 0.0 |
| Whittington BUA | 99.1 | 97.6 | 0.1 | 0.9 | 0.0 | 0.0 |
| BUA Shropshire over 1000 pop | 98.6 | 96.7 | 0.4 | 0.8 | 0.1 | 0.0 |
| Shropshire | 98.0 | 95.4 | 0.7 | 1.0 | 0.2 | 0.1 |
| England | 85.4 | 79.8 | 2.3 | 7.8 | 3.5 | 1.0 |

Source: 2011 Census

Demographics

Religion

| Village | Has religion | Christian | Buddhist | Hindu | Jewish | Muslim | Sikh | Other religion | No religion | Religion not stated |
|---------------------|--------------|-------------|------------|------------|------------|------------|------------|----------------|-------------|---------------------|
| Alveley BUA | 77.2 | 76.5 | 0.1 | 0.0 | 0.0 | 0.2 | 0.0 | 0.4 | 16.0 | 6.8 |
| Baschurch BUA | 78.7 | 77.9 | 0.3 | 0.0 | 0.1 | 0.1 | 0.0 | 0.4 | 15.4 | 5.9 |
| Bayston Hill BUA | 71.4 | 70.8 | 0.2 | 0.0 | 0.0 | 0.0 | 0.0 | 0.2 | 20.8 | 7.9 |
| Bomere Heath BUA | 75.0 | 74.3 | 0.1 | 0.2 | 0.0 | 0.1 | 0.2 | 0.2 | 18.5 | 6.5 |
| Gobowen BUA | 67.7 | 66.7 | 0.2 | 0.3 | 0.0 | 0.2 | 0.1 | 0.3 | 23.8 | 8.5 |
| Hanwood BUA | 70.3 | 69.0 | 0.2 | 0.0 | 0.0 | 0.5 | 0.0 | 0.6 | 21.8 | 7.9 |
| Minsterley BUA | 72.4 | 71.2 | 0.1 | 0.1 | 0.1 | 0.4 | 0.2 | 0.2 | 19.6 | 8.0 |
| Pant BUA | 73.6 | 72.7 | 0.1 | 0.1 | 0.1 | 0.3 | 0.0 | 0.5 | 19.9 | 6.5 |
| Pontesbury BUA | 70.7 | 69.9 | 0.1 | 0.3 | 0.0 | 0.0 | 0.0 | 0.4 | 22.1 | 7.3 |
| Prees BUA | 79.1 | 78.7 | 0.0 | 0.0 | 0.0 | 0.1 | 0.0 | 0.3 | 14.8 | 6.1 |
| Ruyton-XI-Towns BUA | 74.5 | 74.1 | 0.1 | 0.0 | 0.2 | 0.1 | 0.0 | 0.0 | 19.6 | 5.9 |
| Shawbury BUA | 72.9 | 72.5 | 0.1 | 0.0 | 0.0 | 0.1 | 0.0 | 0.1 | 21.7 | 5.4 |
| St Martin's BUA | 69.5 | 68.7 | 0.4 | 0.0 | 0.0 | 0.2 | 0.0 | 0.2 | 21.6 | 8.9 |
| Weston Rhyn BUA | 65.3 | 64.7 | 0.2 | 0.0 | 0.0 | 0.1 | 0.0 | 0.2 | 26.8 | 7.9 |
| Whittington BUA | 73.9 | 73.0 | 0.5 | 0.1 | 0.0 | 0.0 | 0.3 | 0.1 | 19.0 | 7.0 |
| BUA Shropshire | 71.9 | 71.1 | 0.2 | 0.1 | 0.0 | 0.1 | 0.0 | 0.3 | 20.8 | 7.3 |
| Shropshire | 69.9 | 68.7 | 0.3 | 0.1 | 0.0 | 0.3 | 0.1 | 0.4 | 22.8 | 7.3 |
| England | 68.1 | 59.4 | 0.5 | 1.5 | 0.5 | 5.0 | 0.8 | 0.4 | 24.7 | 7.2 |

Source: 2011 Census

Demographics

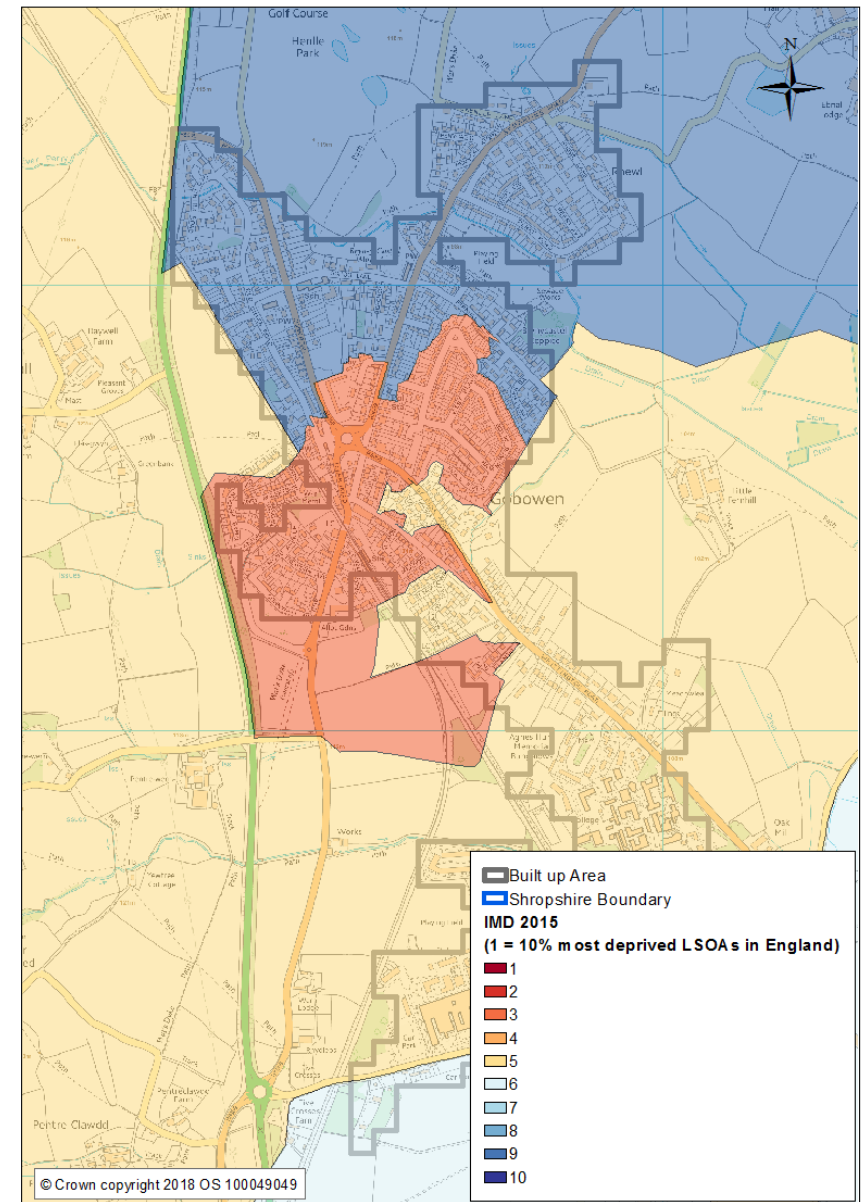
Deprivation

In Gobowen one area falls into the 20% most deprived nationally (Decile 1 = most deprived Decile 10 = least deprived) . The other area to the north of the village is less deprived and falls into the 7th most deprived decile nationally.

In terms of the Geographical Barriers to Services sub domain. The area falls into the 5th and 6th most deprived nationally. in terms of Barriers to Housing and Services domain the area falls into the 5th and 9th deprived nationally.

Geographical Barriers measures physical distance to key facilities e.g. school, shop, GP.

Barriers to Housing and Services measures Household overcrowding, homelessness and housing affordability



Demographics

Working Age Population (aged 16-64 Years)

| Large Villages | Working Age % | Number |
|---------------------------|---------------|-------------------|
| Alveley | 57% | 906 |
| Baschurch | 61% | 965 |
| Bayston Hill | 60% | 3,058 |
| Bomere Heath | 56% | 707 |
| Gobowen | 64% | 2,085 |
| Hanwood | 58% | 637 |
| Minsterley | 61% | 931 |
| Pant | 59% | 1,176 |
| Pontesbury | 57% | 1,067 |
| Prees | 59% | 554 |
| Ruyton-XI-Towns | 55% | 570 |
| Shawbury | 65% | 1,499 |
| St Martin's | 63% | 1,553 |
| Weston Rhyn | 64% | 1,592 |
| Whittington | 62% | 920 |
| Total BUA's over 1000 Pop | 61% | 18,220 |
| Shropshire | 62% | 189,680 |
| England | 65% | 34,329,091 |

Demographics

Industry of Employment

| Industry | Gobowen | Shropshire | England and Wales |
|---|---------|------------|-------------------|
| Agriculture, forestry and fishing | 2.6 | 3.9 | 0.9 |
| Mining and quarrying | 0.1 | 0.2 | 0.2 |
| Manufacturing | 11.7 | 10.6 | 8.9 |
| Electricity, gas, steam and air conditioning supply | 0.9 | 0.4 | 0.6 |
| Water supply; sewerage, waste management and remediation activities | 0.6 | 0.9 | 0.7 |
| Construction | 8.0 | 8.3 | 7.7 |
| Wholesale and retail trade; repair of motor vehicles and motor cycles | 16.7 | 16.1 | 15.9 |
| Transport and storage | 5.1 | 3.9 | 5.0 |
| Accommodation and food service activities | 4.3 | 5.5 | 5.6 |
| Information and communication | 2.6 | 2.7 | 4.0 |
| Financial and insurance activities | 1.6 | 2.0 | 4.3 |
| Property | 0.2 | 1.3 | 1.4 |
| Professional, scientific and technical activities | 2.9 | 5.2 | 6.6 |
| Administrative and support service activities | 4.6 | 3.9 | 4.9 |
| Public administration and defence; compulsory social security | 3.6 | 6.8 | 6.0 |
| Education | 9.8 | 10.0 | 9.9 |
| Human health and social work activities | 19.6 | 13.7 | 12.5 |
| Other | 5.0 | 4.7 | 5.0 |

The largest employer near to Gobowen is The Robert Jones and Agnes Hunt Orthopaedic Hospital, Derwen College and the Old Vicarage Nursing Home. (Source: Mint 2018)

Economy

Economic Inactivity

| Economic Inactivity | Gobowen | % |
|--|---------|-------|
| Economically Inactive | 913 | 37.7% |
| Economically Inactive retired | 357 | 14.8% |
| Economically Inactive Student | 327 | 13.5% |
| Economically Inactive looking after home or family | 74 | 3.1% |
| Economically Inactive long term sick or disabled | 125 | 5.2% |
| Economically Inactive Other | 30 | 1.2% |

Source: 2011 Census

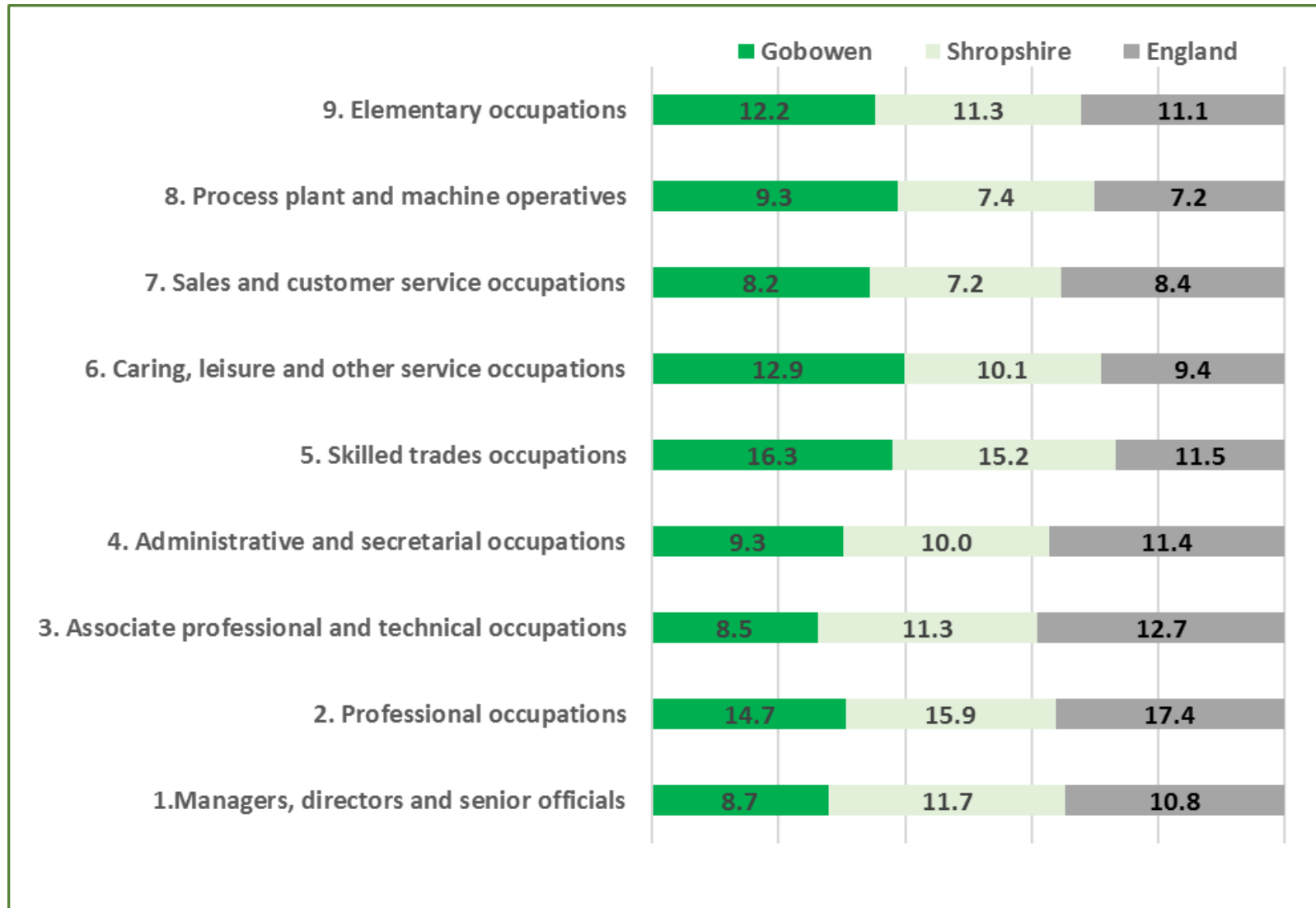
Economically Inactive is defined as, people of working age (16 – 64 years) who are not in employment, who have not been seeking work within the last 4 weeks and/or are unable to start work within the next 2 weeks. Please note economic inactivity refers to the 16 to 74 population rather than the 16-64 population

Employment

| Employment Breakdown | Gobowen | % |
|-------------------------------|---------|-----|
| Economically Active | 1454 | 78% |
| In Employment Total | 1354 | 65% |
| Of which Employee: Total | 1172 | 56% |
| Of which Employee: Part-time | 365 | 18% |
| Of which Employee: Full-time | 807 | 39% |
| Of which Self-employed: Total | 46 | 2% |
| Unemployed including students | 100 | 5% |

Economy

Industry of Occupation



Source: 2011 Census

Economy

Qualifications

| Built-up area | No qualifications | Level 1 | Level 2 | Apprenticeship | Level 3 | Level 4 | Other |
|------------------------------|-------------------|-------------|-------------|----------------|-------------|-------------|------------|
| Alveley BUA | 24.2 | 11.9 | 17.9 | 3.4 | 10.8 | 28.1 | 3.7 |
| Baschurch BUA | 18.2 | 11.5 | 18.2 | 4.0 | 12.2 | 33.2 | 2.8 |
| Bayston Hill BUA | 19.5 | 10.9 | 17.1 | 4.6 | 13.7 | 30.2 | 4.0 |
| Bomere Heath BUA | 20.6 | 12.2 | 14.8 | 5.6 | 13.3 | 29.3 | 4.3 |
| Gobowen BUA | 31.0 | 13.6 | 15.6 | 3.7 | 11.1 | 19.5 | 5.6 |
| Hanwood BUA | 23.0 | 12.9 | 15.2 | 3.2 | 11.2 | 30.3 | 4.1 |
| Minsterley BUA | 27.3 | 14.8 | 16.8 | 3.5 | 11.6 | 20.1 | 5.9 |
| Pant BUA | 20.7 | 13.4 | 16.7 | 4.4 | 13.0 | 27.6 | 4.2 |
| Pontesbury BUA | 23.8 | 9.4 | 17.6 | 5.2 | 12.4 | 27.8 | 4.0 |
| Prees BUA | 27.3 | 12.9 | 16.0 | 3.9 | 13.1 | 23.7 | 3.1 |
| Ruyton-XI-Towns BUA | 13.2 | 12.7 | 17.2 | 4.6 | 13.9 | 34.6 | 3.8 |
| Shawbury BUA | 16.9 | 11.9 | 18.3 | 3.9 | 15.3 | 30.0 | 3.8 |
| St Martin's BUA | 29.9 | 14.9 | 16.3 | 4.1 | 10.7 | 19.8 | 4.3 |
| Weston Rhyn BUA | 23.0 | 14.0 | 20.3 | 4.6 | 12.7 | 21.2 | 4.2 |
| Whittington BUA | 22.6 | 12.9 | 17.7 | 3.7 | 12.5 | 26.1 | 4.6 |
| BUA Shropshire over 1000 pop | 23.0 | 12.5 | 17.1 | 4.2 | 12.6 | 26.3 | 4.2 |
| Shropshire | 22.5 | 13.1 | 16.8 | 3.7 | 12.2 | 27.5 | 4.2 |
| England | 22.5 | 13.3 | 15.2 | 3.6 | 12.4 | 27.4 | 5.7 |

Source: 2011 Census

Health

Health Limiting Illness

| Built-up area | Day-to-day activities limited a lot | Day-to-day activities limited a little | Day-to-day activities not limited |
|------------------------------|-------------------------------------|--|-----------------------------------|
| Alveley BUA | 8.7 | 10.4 | 80.9 |
| Baschurch BUA | 6.9 | 10.3 | 82.8 |
| Bayston Hill BUA | 8.7 | 10.0 | 81.3 |
| Bomere Heath BUA | 9.5 | 12.4 | 78.1 |
| Gobowen BUA | 14.9 | 14.6 | 70.5 |
| Hanwood BUA | 11.1 | 11.3 | 77.6 |
| Minsterley BUA | 9.7 | 8.6 | 81.7 |
| Pant BUA | 8.8 | 11.6 | 79.6 |
| Pontesbury BUA | 9.0 | 11.5 | 79.5 |
| Prees BUA | 10.5 | 11.9 | 77.5 |
| Ruyton-XI-Towns BUA | 4.0 | 5.5 | 90.5 |
| Shawbury BUA | 6.9 | 8.7 | 84.3 |
| St Martin's BUA | 10.4 | 10.1 | 79.4 |
| Weston Rhyn BUA | 8.5 | 10.0 | 81.5 |
| Whittington BUA | 9.7 | 10.5 | 79.8 |
| BUA Shropshire over 1000 pop | 9.4 | 10.7 | 79.9 |
| Shropshire | 8.4 | 10.2 | 81.4 |
| England | 8.3 | 9.3 | 82.4 |

Source: 2011 Census

Health

Health Conditions

| Built-up area | Very good health | Good health | Fair health | Bad health | Very bad health |
|------------------------------|------------------|-------------|-------------|------------|-----------------|
| Alveley BUA | 41.9 | 37.6 | 15.4 | 4.0 | 1.1 |
| Baschurch BUA | 51.9 | 32.7 | 11.5 | 3.0 | 0.8 |
| Bayston Hill BUA | 44.7 | 37.2 | 13.3 | 3.9 | 1.0 |
| Bomere Heath BUA | 42.8 | 35.5 | 15.8 | 3.8 | 2.1 |
| Gobowen BUA | 41.1 | 35.6 | 16.7 | 4.5 | 2.1 |
| Hanwood BUA | 41.0 | 36.7 | 15.2 | 5.3 | 1.7 |
| Minsterley BUA | 42.6 | 37.1 | 14.6 | 4.7 | 1.0 |
| Pant BUA | 44.2 | 37.7 | 12.4 | 4.4 | 1.2 |
| Pontesbury BUA | 46.7 | 35.2 | 13.5 | 3.5 | 1.2 |
| Prees BUA | 44.2 | 33.2 | 14.7 | 6.3 | 1.6 |
| Ruyton-XI-Towns BUA | 60.5 | 29.8 | 7.7 | 1.5 | 0.5 |
| Shawbury BUA | 52.9 | 32.4 | 10.4 | 3.6 | 0.8 |
| St Martin's BUA | 44.9 | 34.8 | 14.6 | 4.2 | 1.5 |
| Weston Rhyn BUA | 48.6 | 32.8 | 13.5 | 4.0 | 1.2 |
| Whittington BUA | 45.2 | 34.0 | 14.9 | 5.1 | 0.7 |
| BUA Shropshire over 1000 pop | 45.8 | 35.1 | 13.7 | 4.1 | 1.2 |
| Shropshire | 46.5 | 34.9 | 13.5 | 3.9 | 1.1 |
| England | 47.2 | 34.2 | 13.1 | 4.2 | 1.2 |

Source: 2011 Census

Health

Health Care Provision

| Built-up area | Provides 1 to 19 hours unpaid care a week | Provides 20 to 49 hours unpaid care a week | Provides 50 or more hours unpaid care a week |
|------------------------------|---|--|--|
| Alveley BUA | 10.7 | 2.0 | 2.4 |
| Baschurch BUA | 8.5 | 0.8 | 2.3 |
| Bayston Hill BUA | 8.2 | 1.2 | 2.7 |
| Bomere Heath BUA | 8.9 | 1.0 | 2.9 |
| Gobowen BUA | 6.7 | 1.7 | 2.5 |
| Hanwood BUA | 6.9 | 1.3 | 3.8 |
| Minsterley BUA | 5.8 | 2.2 | 2.3 |
| Pant BUA | 7.3 | 1.2 | 3.7 |
| Pontesbury BUA | 8.6 | 0.9 | 2.3 |
| Prees BUA | 8.3 | 1.5 | 4.4 |
| Ruyton-XI-Towns BUA | 6.5 | 0.7 | 2.0 |
| Shawbury BUA | 5.6 | 1.3 | 2.2 |
| St Martin's BUA | 7.0 | 1.1 | 2.7 |
| Weston Rhyn BUA | 6.9 | 1.5 | 2.6 |
| Whittington (Shropshire) BUA | 8.2 | 1.8 | 2.4 |
| BUA Shropshire over 1000 pop | 7.5 | 1.3 | 2.7 |
| Shropshire | 7.5 | 1.3 | 2.4 |
| England | 6.5 | 1.4 | 2.4 |

Source: 2011 Census

Housing

Household Composition Source: 2011 Census

| Built-up area | Owned | Owned: Owned outright | Owned: Owned with a mortgage or loan | Shared ownership (part owned and part rented) | Social rented | Social rented: Rented from council (Local Authority) | Social rented: Other | Private rented | Living rent free |
|------------------------------|-------------|--------------------------|---|---|---------------|---|-------------------------|----------------|------------------|
| Alveley BUA | 80.9 | 49.9 | 31 | 0.1 | 10.4 | 9.1 | 1.3 | 6.4 | 2.1 |
| Baschurch BUA | 83.5 | 42.6 | 41 | 0.6 | 8.4 | 0.5 | 7.9 | 6.6 | 0.8 |
| Bayston Hill BUA | 86.7 | 51 | 35.7 | 0.1 | 4.9 | 1.1 | 3.8 | 7.3 | 1 |
| Bomere Heath BUA | 78.2 | 44.8 | 33.4 | 1.1 | 13 | 2.1 | 10.9 | 6.6 | 1.1 |
| Gobowen BUA | 69.7 | 38.4 | 31.2 | 0.4 | 19.1 | 15.7 | 3.4 | 7.9 | 2.8 |
| Hanwood BUA | 61.9 | 35.8 | 26.1 | 1.2 | 28.3 | 8.5 | 19.8 | 6.9 | 1.6 |
| Minsterley BUA | 66.2 | 30.8 | 35.4 | 0.9 | 21.5 | 5.4 | 16.1 | 9.3 | 2.1 |
| Pant BUA | 80.8 | 48.6 | 32.1 | 0.1 | 9.4 | 6.3 | 3.1 | 8.2 | 1.5 |
| Pontesbury BUA | 72.3 | 46.4 | 25.9 | 0.4 | 14.2 | 4.4 | 9.8 | 11.4 | 1.7 |
| Prees BUA | 78.6 | 42.5 | 36.1 | 0 | 10.2 | 1.7 | 8.5 | 9.2 | 2 |
| Ruyton-XI-Towns BUA | 76.2 | 35.3 | 40.8 | 0.3 | 10.1 | 8.2 | 1.9 | 10.1 | 3.3 |
| Shawbury BUA | 63.4 | 32.4 | 31 | 0.8 | 17.5 | 1.1 | 16.4 | 17.2 | 1.1 |
| St Martin's BUA | 72.6 | 37.7 | 34.9 | 0.1 | 18 | 14.2 | 3.8 | 6.4 | 2.9 |
| Weston Rhyn BUA | 68.4 | 36.7 | 31.7 | 0.2 | 18.9 | 15.2 | 3.7 | 9.9 | 2.5 |
| Whittington (Shropshire) BUA | 74.2 | 38.6 | 35.6 | 0.2 | 14.2 | 10.1 | 4 | 10.8 | 0.6 |
| BUA Shropshire over 1000 pop | 75.2 | 41.9 | 33.3 | 0.4 | 13.8 | 7.1 | 6.7 | 8.8 | 1.8 |
| Shropshire | 69.2 | 38.6 | 30.6 | 0.6 | 13.5 | 5 | 8.5 | 15 | 1.8 |
| England | 63.3 | 30.6 | 32.8 | 0.8 | 17.7 | 9.4 | 8.3 | 16.8 | 1.3 |

The average house price in Gobowen was £222,230 (Source Rightmove, 2017 figures)

Housing

Household Type

| Built-up area | Whole house or bungalow: Detached | Whole house or bungalow: Semi-detached | Whole house or bungalow: Terraced (including end-terrace) | Flat, maisonette or apartment: Purpose-built block of flats or tenement | Flat, maisonette or apartment: Part of a converted or shared house (including bed-sits) | Flat, maisonette or apartment: In a commercial building |
|------------------------------|-----------------------------------|--|---|---|---|---|
| Alveley BUA | 48.6 | 40.8 | 9.1 | 0.6 | 0.1 | 0.6 |
| Baschurch BUA | 63.6 | 28.4 | 6.4 | 0.6 | 0.5 | 0.5 |
| Bayston Hill BUA | 37.6 | 54.6 | 4.1 | 2.6 | 0.5 | 0.5 |
| Bomere Heath BUA | 61.5 | 22.2 | 7.7 | 7.3 | 0.7 | 0.5 |
| Gobowen BUA | 34.8 | 45.6 | 13 | 5.6 | 0.4 | 0.5 |
| Hanwood BUA | 43.4 | 34.3 | 12 | 9.4 | 0.6 | 0.4 |
| Minsterley BUA | 34 | 45.2 | 13.1 | 6.8 | 0.3 | 0.6 |
| Pant BUA | 62.3 | 24.6 | 8.9 | 2.8 | 0.6 | 0.5 |
| Pontesbury BUA | 53 | 26.5 | 8.3 | 9.9 | 1.3 | 0.6 |
| Prees BUA | 54.9 | 27.9 | 11 | 3.6 | 2.4 | 0 |
| Ruyton-XI-Towns BUA | 54 | 28.5 | 10.9 | 5.9 | 0.8 | 0 |
| Shawbury BUA | 45.9 | 43.9 | 6.1 | 2.5 | 0.8 | 0.7 |
| St Martin's BUA | 38.2 | 46.1 | 12.1 | 3 | 0.3 | 0.3 |
| Weston Rhyn BUA | 36.6 | 36.5 | 18.6 | 7 | 0.6 | 0.7 |
| Whittington (Shropshire) BUA | 47.7 | 37.4 | 13.1 | 0.9 | 0.3 | 0.5 |
| BUA Shropshire over 1000 pop | 45.3 | 39.4 | 9.8 | 4.3 | 0.6 | 0.5 |
| Shropshire | 39.5 | 33.4 | 16.8 | 6.6 | 1.8 | 1.1 |
| England | 22.3 | 30.7 | 24.5 | 16.7 | 4.3 | 1.1 |

Source: 2011 Census

Housing

Housing Development

| Housing Allocations | Provision | Already Completed | Expected Build Out Rate | | | | | | | | | |
|--|-----------|-------------------|-------------------------|---------|---------|---------|---------|---------|---------|---------|---------|---------|
| | | | 2017-18 | 2018-19 | 2019-20 | 2020-21 | 2021-22 | 2022-23 | 2023-24 | 2024-25 | 2025-26 | 2026-32 |
| Land at Southlands Avenue Gobowen | 20 | | | | | | 20 | | | | | |
| Land between A5 and Shrewsbury railway line, Gobowen | 90 | | | | 25 | 25 | 25 | 15 | | | | |

To view the Policy Map of Shropshire Council which shows areas for potential development use the following link— [Policy Map](#)

Note: There is currently a local plan review and further site allocations across Shropshire will follow. This site information shown above is based on the 2017 5 year land supply document which may potentially change following the review.

The Preferred Sites consultation is for potential new development sites is open between Dec 2018 and Jan 2019 and can be viewed here: <https://shropshire.gov.uk/get-involved/local-plan-review-preferred-sites-consultation/>

Other policy information can be viewed by using the following link— <https://shropshire.gov.uk/planning-policy/local-planning/local-plan-partial-review-2016-2036/>

Additional Information

Produced and designed by the Information, Intelligence and Insight team of Shropshire Council

Whilst every effort has been made to ensure the accuracy of the information contained within this profile, Shropshire Council can not accept any responsibility for errors or omissions. The inclusion of associations, organisations or facilities in this profile should not be taken as an endorsement by Shropshire Council of the services offered.

Easy ways to get in touch

- Telephone - **0345 678 9000**
- Email - **commissioning.support@shropshire.gov.uk**

Find out more information on Shropshire

For more information on Shropshire including ward profiles, population data, Shropshire Snapshots, economic data and reports - visit our webpages at: <https://new.shropshire.gov.uk/information-intelligence-and-insight/facts-and-figures/>