

Ruyton XI Towns Village Profile - 2018

Ruyton XI Towns is a large village and civil parish located approximately 11 miles north west of Shrewsbury and 9 miles from Oswestry. The village is located on the B4397 approximately 2 miles from the main A5 trunk road. There are local bus services to Shrewsbury and Oswestry and the nearest rail way station is Gobowen or Shrewsbury.

The village acquired its unusual name in the twelfth century when a castle was built, and it became the major manor of eleven local townships. The Roman numeral for eleven is included in its name. Some of the eleven ancient townships, mostly situated to the north and west of Ruyton, still survive as hamlets today; although some, like Coton, are just a collection of farm buildings. The eleven were Ruyton, Coton, Shotatton, Shellock, Eardiston and Wykey, which remain in the parish; and Felton, Haughton, Rednal, Sutton and Tedsmore, now in the parish of West Felton.

The village famous land marks are an area of sandstone known as the Cliffe part of Nesscliffe Country Park . The unusual war memorial carved into the sandstone cliff. And also Packwood Haugh Preparatory School.

Key Facts and Geography	
Area:	47.75 hectares
Population Density:	21.8 persons per hectare
Total Population	1,040 (52% male 48%, female%)
Households:	365
Dwellings:	376
Communal Establishment	1

Source: 2011 Census



The local school is St John the Baptist C of E Primary School. The nearest secondary school is The Corbet School in Baschurch.

Please visit Shropshire Council website for more details of schools in the catchment area.

[View a map of schools in Shropshire](#)

Contents Page

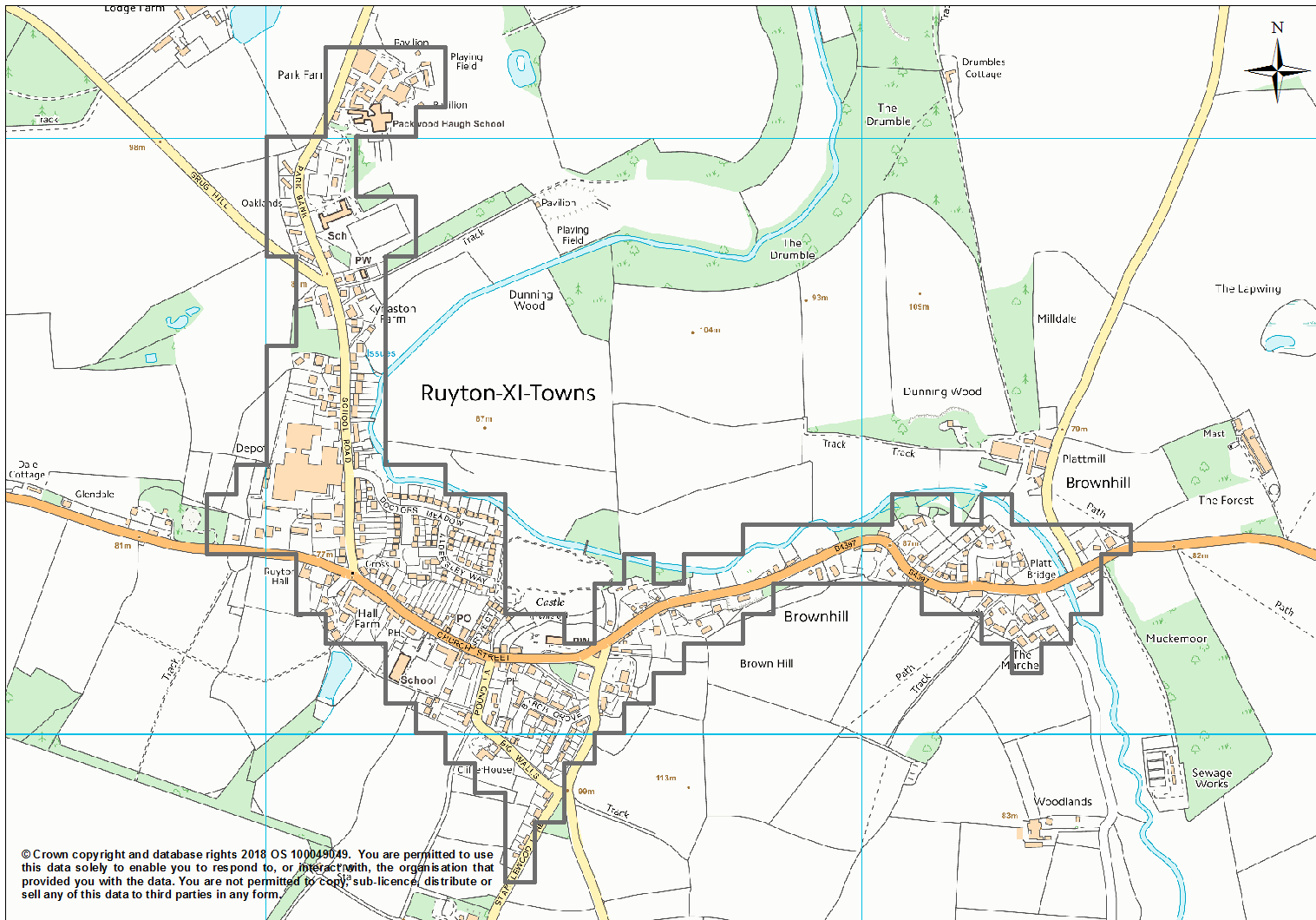
Location Maps	3
Demographics	4
Economy	11
Health	14
Housing	17

This Profile uses the Office for National Statistics (ONS) Built up Area (BUA) geography which is available for the 2011 Census results. For further information visit <https://www.ons.gov.uk/methodology/geography/ukgeographies/censusgeography>

These Profiles have been completed for large Shropshire villages over 1,000 population (15 in total) as at the 2011 Census. The profiles follow on from a suite of Market Town Profiles for Shropshire and Ward Profiles for Shropshire.

<https://www.shropshire.gov.uk/information-intelligence-and-insight/facts-and-figures/area-profiles/>

Location Maps



To view the Google Aerial Map please select the following link - [Aerial Map](#)

Demographics

Population of Large Villages

Village	All usual residents	Males	Females	Lives in a household	Lives in a communal establishment	Area (Hectares)	Density (number of persons per hectare)
Alveley	1,578	771	807	1,578	0	64.50	24.5
Baschurch	1,595	763	832	1,570	25	66.75	23.9
Bayston Hill	5,079	2,488	2,591	5,020	59	132.00	38.5
Bomere Heath	1,254	609	645	1,249	5	45.00	27.9
Gobowen	3,270	1,594	1,676	2,914	356	115.75	28.3
Hanwood	1,090	527	563	1,085	5	44.25	24.6
Minsterley	1,532	762	770	1,532	0	57.00	26.9
Pant	1,998	978	1,020	1,992	6	122.00	16.4
Pontesbury	1,873	908	965	1,852	21	80.75	23.2
Prees	939	466	473	939	0	59.50	15.8
Ruyton-XI-Towns	1,040	542	498	906	134	47.75	21.8
Shawbury	2,317	1,222	1,095	2,052	265	167.75	13.8
St Martin's	2,471	1,224	1,247	2,460	11	75.50	32.7
Weston Rhyn	2,502	1,131	1,371	2,287	215	93.00	26.9
Whittington	1,481	717	764	1,471	10	56.75	26.1
Total	30,019	14,702	15,317	28,907	1,112	1,228.25	24.4
Shropshire	306,129	151,606	154,523	298,183	7,946	319,730	1.0
England	53,012,456	26,069,148	26,943,308	52,059,931	952,525	13,027,842.85	4.1

Source: 2011 Census

Information, Intelligence & Insight Team

Phone: 0345 678 9000, Email: commissioning.support@shropshire.gov.uk

Demographics

Age Structure

Age	Ruyton XI Towns	Percentage	Shropshire percentage	England Percentage
All usual residents	1,040	100%	100%	100%
Age 0 to 4	51	5%	5%	6.3%
Age 5 to 7	44	3%	3%	3.4%
Age 8 to 9	39	2%	2%	2.2%
Age 10 to 14	184	7%	6%	5.8%
Age 15	11	2%	1%	1.2%
Age 16 to 17	25	6%	3%	2.5%
Age 18 to 19	18	3%	2%	2.6%
Age 20 to 24	48	5%	5%	6.8%
Age 25 to 29	29	5%	5%	6.9%
Age 30 to 44	177	17%	17%	20.6%
Age 45 to 59	204	20%	21%	19.4%
Age 60 to 64	69	7%	7%	6.0%
Age 65 to 74	87	10%	12%	8.6%
Age 75 to 84	41	5%	7%	5.5%
Age 85 to 89	4	1%	2%	1.5%
Age 90 and over	9	0%	1%	0.8%
Mean Age	35.9	100%	100%	39.3

Source: 2011 Census

Demographics

Ethnicity

Village	White	White British	Mixed/multiple ethnic groups	Asian/Asian British	Black/African/ Caribbean/Black British	Other ethnic group
Alveley BUA	99.6	98.1	0.1	0.1	0.1	0.0
Baschurch BUA	99.0	97.1	0.7	0.2	0.1	0.0
Bayston Hill BUA	99.0	96.9	0.4	0.5	0.1	0.0
Bomere Heath BUA	98.6	96.5	0.7	0.6	0.2	0.0
Gobowen BUA	98.0	96.7	0.5	1.3	0.1	0.1
Hanwood BUA	97.9	96.3	0.8	0.9	0.0	0.4
Minsterley BUA	97.9	95.0	0.1	1.7	0.3	0.1
Pant BUA	99.3	97.1	0.2	0.5	0.0	0.0
Pontesbury BUA	99.1	97.2	0.2	0.7	0.0	0.0
Prees BUA	98.8	94.9	0.4	0.5	0.2	0.0
Ruyton-XI-Towns BUA	99.0	96.8	0.4	0.6	0.0	0.0
Shawbury BUA	98.1	96.3	0.7	0.9	0.2	0.0
St Martin's BUA	98.6	96.7	0.4	0.6	0.1	0.2
Weston Rhyn BUA	97.3	95.5	0.7	1.9	0.1	0.0
Whittington	99.1	97.6	0.1	0.9	0.0	0.0
BUA Shropshire over 1000 pop	98.6	96.7	0.4	0.8	0.1	0.0
Shropshire	98.0	95.4	0.7	1.0	0.2	0.1
England	85.4	79.8	2.3	7.8	3.5	1.0

Source: 2011 Census

Demographics

Religion

Village	Has religion	Christian	Buddhist	Hindu	Jewish	Muslim	Sikh	Other religion	No religion	Religion not stated
Alveley BUA	77.2	76.5	0.1	0.0	0.0	0.2	0.0	0.4	16.0	6.8
Baschurch BUA	78.7	77.9	0.3	0.0	0.1	0.1	0.0	0.4	15.4	5.9
Bayston Hill BUA	71.4	70.8	0.2	0.0	0.0	0.0	0.0	0.2	20.8	7.9
Bomere Heath BUA	75.0	74.3	0.1	0.2	0.0	0.1	0.2	0.2	18.5	6.5
Gobowen BUA	67.7	66.7	0.2	0.3	0.0	0.2	0.1	0.3	23.8	8.5
Hanwood BUA	70.3	69.0	0.2	0.0	0.0	0.5	0.0	0.6	21.8	7.9
Minsterley BUA	72.4	71.2	0.1	0.1	0.1	0.4	0.2	0.2	19.6	8.0
Pant BUA	73.6	72.7	0.1	0.1	0.1	0.3	0.0	0.5	19.9	6.5
Pontesbury BUA	70.7	69.9	0.1	0.3	0.0	0.0	0.0	0.4	22.1	7.3
Prees BUA	79.1	78.7	0.0	0.0	0.0	0.1	0.0	0.3	14.8	6.1
Ruyton-XI-Towns BUA	74.5	74.1	0.1	0.0	0.2	0.1	0.0	0.0	19.6	5.9
Shawbury BUA	72.9	72.5	0.1	0.0	0.0	0.1	0.0	0.1	21.7	5.4
St Martin's BUA	69.5	68.7	0.4	0.0	0.0	0.2	0.0	0.2	21.6	8.9
Weston Rhyn BUA	65.3	64.7	0.2	0.0	0.0	0.1	0.0	0.2	26.8	7.9
Whittington	73.9	73.0	0.5	0.1	0.0	0.0	0.3	0.1	19.0	7.0
BUA Shropshire	71.9	71.1	0.2	0.1	0.0	0.1	0.0	0.3	20.8	7.3
Shropshire	69.9	68.7	0.3	0.1	0.0	0.3	0.1	0.4	22.8	7.3
England	68.1	59.4	0.5	1.5	0.5	5.0	0.8	0.4	24.7	7.2

Source: 2011 Census

Demographics

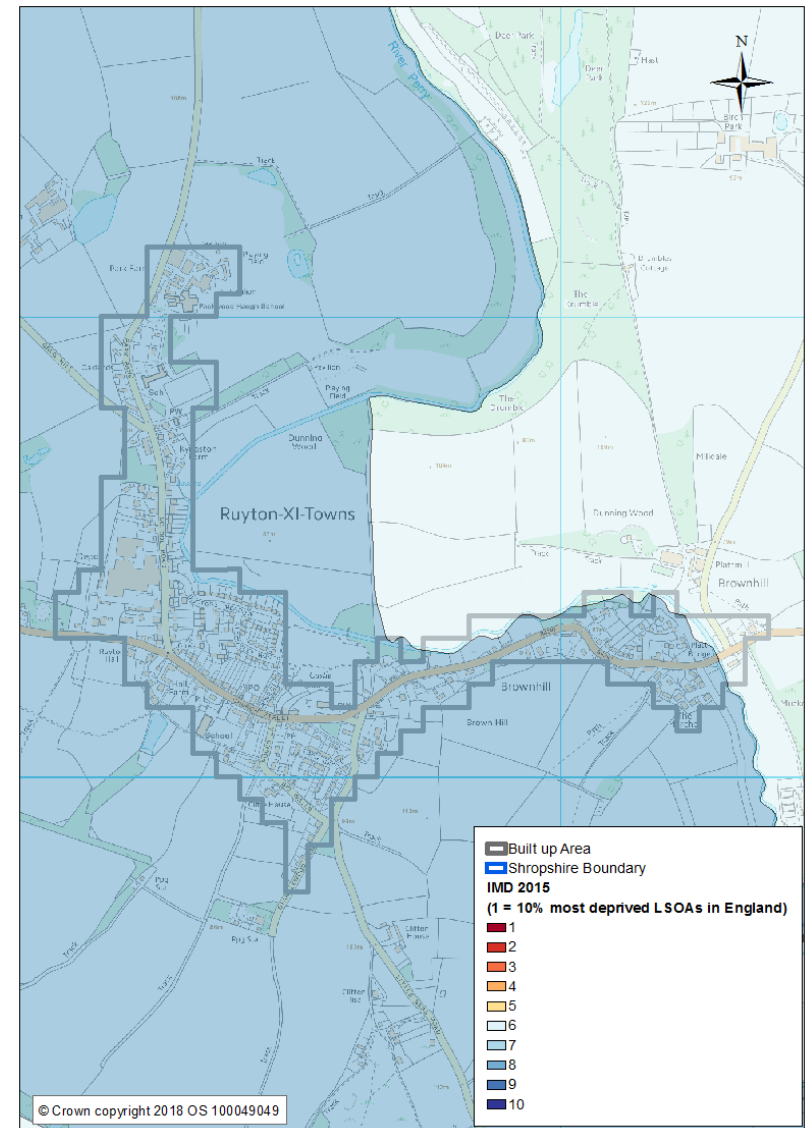
Deprivation

Ruyton X1 Towns and the surrounding location has very low levels of deprivation and the area falls into the 8th most deprived deciles nationally (Decile 1 = most deprived Decile 10 = least deprived).

The area falls into the 10 percent (decile 1) most deprived LLSOA's in England for the Geographical Barriers to Services sub domain. The area falls into the 20% (decile 2) most deprived in terms of Barriers to Housing and Services domain.

Geographical Barriers measures physical distance to key facilities e.g. school, shop, GP.

Barriers to Housing and Services measures Household overcrowding, homelessness and housing affordability.



Demographics

Working Age Population (aged 16-64 Years)

Large Villages	Working Age %	Number
Alveley	57%	906
Baschurch	61%	965
Bayston Hill	60%	3,058
Bomere Heath	56%	707
Gobowen	64%	2,085
Hanwood	58%	637
Minsterley	61%	931
Pant	59%	1,176
Pontesbury	57%	1,067
Prees	59%	554
Ruyton-XI-Towns	55%	570
Shawbury	65%	1,499
St Martin's	63%	1,553
Weston Rhyn	64%	1,592
Whittington	62%	920
Total BUA's over 1000 Pop	61%	18,220
Shropshire	62%	189,680
England	65%	34,329,091

Demographics

Industry of Employment

Industry	Ruyton XI Towns	Shropshire	England and Wales
Agriculture, forestry and fishing	3.2	3.9	0.9
Mining and quarrying	0.2	0.2	0.2
Manufacturing	8.4	10.6	8.9
Electricity, gas, steam and air conditioning supply	0.4	0.4	0.6
Water supply; sewerage, waste management and remediation activities	0.6	0.9	0.7
Construction	7.0	8.3	7.7
Wholesale and retail trade; repair of motor vehicles and motor cycles	12.9	16.1	15.9
Transport and storage	4.0	3.9	5.0
Accommodation and food service activities	4.2	5.5	5.6
Information and communication	2.5	2.7	4.0
Financial and insurance activities	1.9	2.0	4.3
Property	0.6	1.3	1.4
Professional, scientific and technical activities	5.9	5.2	6.6
Administrative and support service activities	4.4	3.9	4.9
Public administration and defence; compulsory social security	7.2	6.8	6.0
Education	16.9	10.0	9.9
Human health and social work activities	15.2	13.7	12.5
Other	4.4	4.7	5.0

The largest employer near to Ruyton X1 Towns is Packwood Haugh School and St John's the Baptist C of E School.

(Source: Mint 2018)

Economy

Economic Inactivity

Economic Inactivity	Ruyton XI Towns	%
Economically Inactive	168	25.6
Economically Inactive retired	94	14.3
Economically Inactive Student	25	3.8
Economically Inactive looking after home or family	28	4.3
Economically Inactive long term sick or disabled	9	4%
Economically Inactive Other	12	2%

Source: 2011 Census

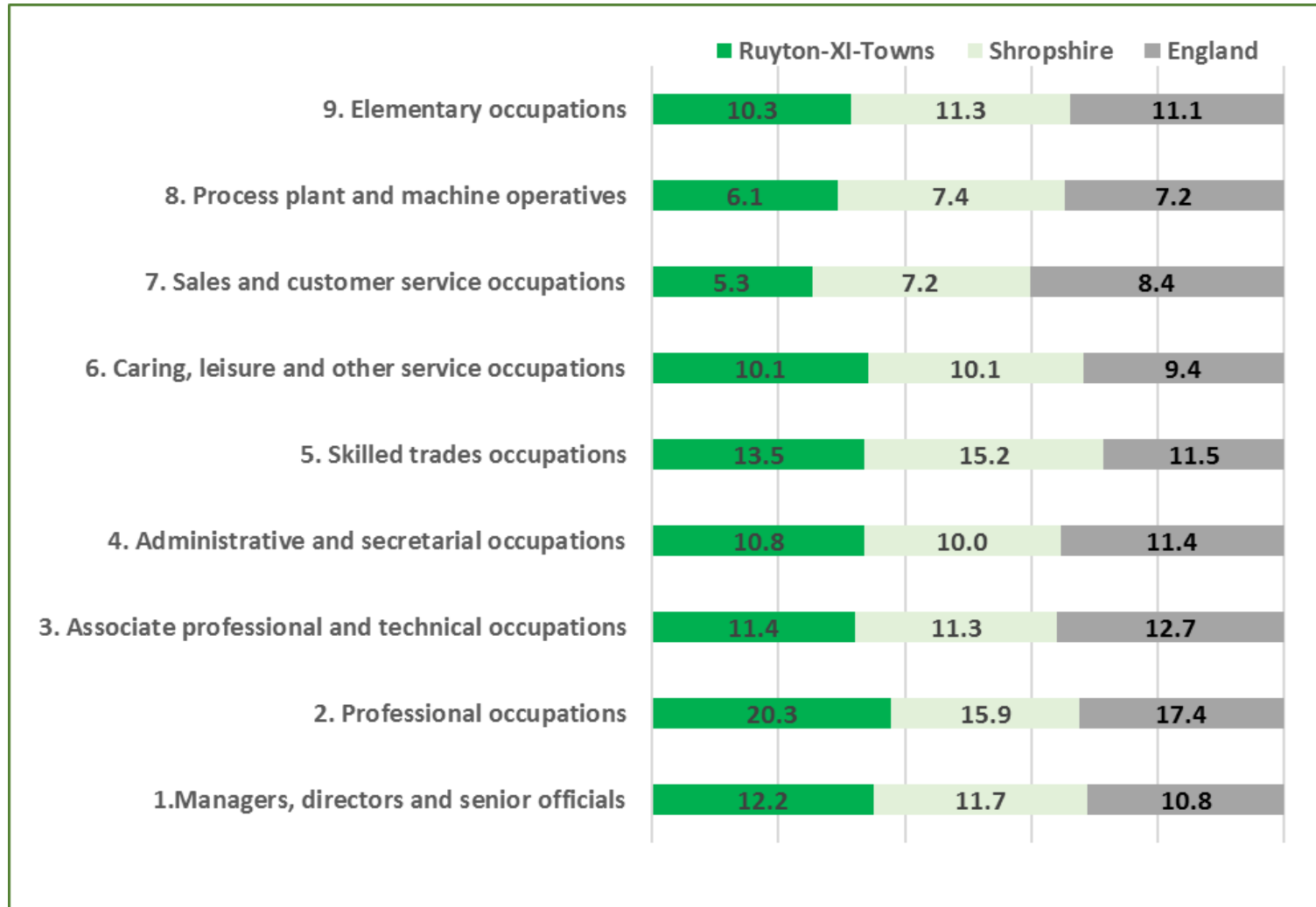
Economically Inactive is defined as, people of working age (16 – 64 years) who are not in employment, who have not been seeking work within the last 4 weeks and/or are unable to start work within the next 2 weeks. Please note economic inactivity refers to the 16 to 74 population rather than the 16-64 population.

Employment

Employment Breakdown	Ruyton XI Towns	%
Economically Active	465	82%
In Employment Total	450	79%
Of which Employee: Total	379	66%
Of which Employee: Part-time	97	17%
Of which Employee: Full-time	282	49%
Of which Self-employed: Total	71	12%
Unemployed including students	15	3%

Economy

Industry of Occupation



Source: 2011 Census

Economy

Qualifications

Built-up area	No qualifications	Level 1	Level 2	Apprenticeship	Level 3	Level 4	Other
Alveley BUA	24.2	11.9	17.9	3.4	10.8	28.1	3.7
Baschurch BUA	18.2	11.5	18.2	4.0	12.2	33.2	2.8
Bayston Hill BUA	19.5	10.9	17.1	4.6	13.7	30.2	4.0
Bomere Heath BUA	20.6	12.2	14.8	5.6	13.3	29.3	4.3
Gobowen BUA	31.0	13.6	15.6	3.7	11.1	19.5	5.6
Hanwood BUA	23.0	12.9	15.2	3.2	11.2	30.3	4.1
Minsterley BUA	27.3	14.8	16.8	3.5	11.6	20.1	5.9
Pant BUA	20.7	13.4	16.7	4.4	13.0	27.6	4.2
Pontesbury BUA	23.8	9.4	17.6	5.2	12.4	27.8	4.0
Prees BUA	27.3	12.9	16.0	3.9	13.1	23.7	3.1
Ruyton-XI-Towns BUA	13.2	12.7	17.2	4.6	13.9	34.6	3.8
Shawbury BUA	16.9	11.9	18.3	3.9	15.3	30.0	3.8
St Martin's BUA	29.9	14.9	16.3	4.1	10.7	19.8	4.3
Weston Rhyn BUA	23.0	14.0	20.3	4.6	12.7	21.2	4.2
Whittington BUA	22.6	12.9	17.7	3.7	12.5	26.1	4.6
BUA Shropshire over 1000 pop	23.0	12.5	17.1	4.2	12.6	26.3	4.2
Shropshire	22.5	13.1	16.8	3.7	12.2	27.5	4.2
England	22.5	13.3	15.2	3.6	12.4	27.4	5.7

Source: 2011 Census

Health

Health Limiting Illness

Built-up area	Day-to-day activities limited a lot	Day-to-day activities limited a little	Day-to-day activities not limited
Alveley BUA	8.7	10.4	80.9
Baschurch BUA	6.9	10.3	82.8
Bayston Hill BUA	8.7	10.0	81.3
Bomere Heath BUA	9.5	12.4	78.1
Gobowen BUA	14.9	14.6	70.5
Hanwood BUA	11.1	11.3	77.6
Minsterley BUA	9.7	8.6	81.7
Pant BUA	8.8	11.6	79.6
Pontesbury BUA	9.0	11.5	79.5
Prees BUA	10.5	11.9	77.5
Ruyton-XI-Towns BUA	4.0	5.5	90.5
Shawbury BUA	6.9	8.7	84.3
St Martin's BUA	10.4	10.1	79.4
Weston Rhyn BUA	8.5	10.0	81.5
Whittington BUA	9.7	10.5	79.8
BUA Shropshire over 1000 pop	9.4	10.7	79.9
Shropshire	8.4	10.2	81.4
England	8.3	9.3	82.4

Source: 2011 Census

Health

Health Conditions

Built-up area	Very good health	Good health	Fair health	Bad health	Very bad health
Alveley BUA	41.9	37.6	15.4	4.0	1.1
Baschurch BUA	51.9	32.7	11.5	3.0	0.8
Bayston Hill BUA	44.7	37.2	13.3	3.9	1.0
Bomere Heath BUA	42.8	35.5	15.8	3.8	2.1
Gobowen BUA	41.1	35.6	16.7	4.5	2.1
Hanwood BUA	41.0	36.7	15.2	5.3	1.7
Minsterley BUA	42.6	37.1	14.6	4.7	1.0
Pant BUA	44.2	37.7	12.4	4.4	1.2
Pontesbury BUA	46.7	35.2	13.5	3.5	1.2
Prees BUA	44.2	33.2	14.7	6.3	1.6
Ruyton-XI-Towns BUA	60.5	29.8	7.7	1.5	0.5
Shawbury BUA	52.9	32.4	10.4	3.6	0.8
St Martin's BUA	44.9	34.8	14.6	4.2	1.5
Weston Rhyn BUA	48.6	32.8	13.5	4.0	1.2
Whittington BUA	45.2	34.0	14.9	5.1	0.7
BUA Shropshire over 1000 pop	45.8	35.1	13.7	4.1	1.2
Shropshire	46.5	34.9	13.5	3.9	1.1
England	47.2	34.2	13.1	4.2	1.2

Source: 2011 Census

Health

Health Care Provision

Built-up area	Provides 1 to 19 hours unpaid care a week	Provides 20 to 49 hours unpaid care a week	Provides 50 or more hours unpaid care a week
Alveley BUA	10.7	2.0	2.4
Baschurch BUA	8.5	0.8	2.3
Bayston Hill BUA	8.2	1.2	2.7
Bomere Heath BUA	8.9	1.0	2.9
Gobowen BUA	6.7	1.7	2.5
Hanwood BUA	6.9	1.3	3.8
Minsterley BUA	5.8	2.2	2.3
Pant BUA	7.3	1.2	3.7
Pontesbury BUA	8.6	0.9	2.3
Prees BUA	8.3	1.5	4.4
Ruyton-XI-Towns BUA	6.5	0.7	2.0
Shawbury BUA	5.6	1.3	2.2
St Martin's BUA	7.0	1.1	2.7
Weston Rhyn BUA	6.9	1.5	2.6
Whittington (Shropshire) BUA	8.2	1.8	2.4
BUA Shropshire over 1000 pop	7.5	1.3	2.7
Shropshire	7.5	1.3	2.4
England	6.5	1.4	2.4

Source: 2011 Census

Housing

Household Composition Source: 2011 Census

Built-up area	Owned	Owned: Owned outright	Owned: Owned with a mortgage or loan	Shared ownership (part owned and part rented)	Social rented	Social rented: Rented from council (Local Authority)	Social rented: Other	Private rented	Living rent free
Alveley BUA	80.9	49.9	31	0.1	10.4	9.1	1.3	6.4	2.1
Baschurch BUA	83.5	42.6	41	0.6	8.4	0.5	7.9	6.6	0.8
Bayston Hill BUA	86.7	51	35.7	0.1	4.9	1.1	3.8	7.3	1
Bomere Heath BUA	78.2	44.8	33.4	1.1	13	2.1	10.9	6.6	1.1
Gobowen BUA	69.7	38.4	31.2	0.4	19.1	15.7	3.4	7.9	2.8
Hanwood BUA	61.9	35.8	26.1	1.2	28.3	8.5	19.8	6.9	1.6
Minsterley BUA	66.2	30.8	35.4	0.9	21.5	5.4	16.1	9.3	2.1
Pant BUA	80.8	48.6	32.1	0.1	9.4	6.3	3.1	8.2	1.5
Pontesbury BUA	72.3	46.4	25.9	0.4	14.2	4.4	9.8	11.4	1.7
Prees BUA	78.6	42.5	36.1	0	10.2	1.7	8.5	9.2	2
Ruyton-XI-Towns BUA	76.2	35.3	40.8	0.3	10.1	8.2	1.9	10.1	3.3
Shawbury BUA	63.4	32.4	31	0.8	17.5	1.1	16.4	17.2	1.1
St Martin's BUA	72.6	37.7	34.9	0.1	18	14.2	3.8	6.4	2.9
Weston Rhyn BUA	68.4	36.7	31.7	0.2	18.9	15.2	3.7	9.9	2.5
Whittington (Shropshire) BUA	74.2	38.6	35.6	0.2	14.2	10.1	4	10.8	0.6
BUA Shropshire over 1000 pop	75.2	41.9	33.3	0.4	13.8	7.1	6.7	8.8	1.8
Shropshire	69.2	38.6	30.6	0.6	13.5	5	8.5	15	1.8
England	63.3	30.6	32.8	0.8	17.7	9.4	8.3	16.8	1.3

The average house price in Ruyton X1 Towns was £248,861. (Source Rightmove, 2017 figures)

Housing

Household Type

Built-up area	Whole house or bungalow: Detached	Whole house or bungalow: Semi-detached	Whole house or bungalow: Terraced (including end-terrace)	Flat, maisonette or apartment: Purpose-built block of flats or tenement	Flat, maisonette or apartment: Part of a converted or shared house (including bed-sits)	Flat, maisonette or apartment: In a commercial building
Alveley BUA	48.6	40.8	9.1	0.6	0.1	0.6
Baschurch BUA	63.6	28.4	6.4	0.6	0.5	0.5
Bayston Hill BUA	37.6	54.6	4.1	2.6	0.5	0.5
Bomere Heath BUA	61.5	22.2	7.7	7.3	0.7	0.5
Gobowen BUA	34.8	45.6	13	5.6	0.4	0.5
Hanwood BUA	43.4	34.3	12	9.4	0.6	0.4
Minsterley BUA	34	45.2	13.1	6.8	0.3	0.6
Pant BUA	62.3	24.6	8.9	2.8	0.6	0.5
Pontesbury BUA	53	26.5	8.3	9.9	1.3	0.6
Prees BUA	54.9	27.9	11	3.6	2.4	0
Ruyton-XI-Towns BUA	54	28.5	10.9	5.9	0.8	0
Shawbury BUA	45.9	43.9	6.1	2.5	0.8	0.7
St Martin's BUA	38.2	46.1	12.1	3	0.3	0.3
Weston Rhyn BUA	36.6	36.5	18.6	7	0.6	0.7
Whittington (Shropshire) BUA	47.7	37.4	13.1	0.9	0.3	0.5
BUA Shropshire over 1000 pop	45.3	39.4	9.8	4.3	0.6	0.5
Shropshire	39.5	33.4	16.8	6.6	1.8	1.1
England	22.3	30.7	24.5	16.7	4.3	1.1

Source: 2011 Census

Housing

Housing Development

Housing Allocations	Provision	Already Completed	Expected Build Out Rate									
			2017-18	2018-19	2019-20	2020-21	2021-22	2022-23	2023-24	2024-25	2025-26	2026-32
No Housing allocations currently												

To view the Policy Map of Shropshire Council which shows areas for potential development use the following link— [Policy Map](#)

Note: There is currently a local plan review and further site allocations across Shropshire will follow. This site information shown above is based on the 2017 5 year land supply document which may potentially change following the review.

The Preferred Sites consultation is for potential new development sites is open between Dec 2018 and Jan 2019 and can be viewed here: <https://shropshire.gov.uk/get-involved/local-plan-review-preferred-sites-consultation/>

Other policy information can be viewed by using the following link— <https://shropshire.gov.uk/planning-policy/local-planning/local-plan-partial-review-2016-2036/>

Additional Information

Produced and designed by the Information, Intelligence and Insight team of Shropshire Council

Whilst every effort has been made to ensure the accuracy of the information contained within this profile, Shropshire Council can not accept any responsibility for errors or omissions. The inclusion of associations, organisations or facilities in this profile should not be taken as an endorsement by Shropshire Council of the services offered.

Easy ways to get in touch

- Telephone - **0345 678 9000**
- Email - **commissioning.support@shropshire.gov.uk**

Find out more information on Shropshire

For more information on Shropshire including ward profiles, population data, Shropshire Snapshots, economic data and reports - visit our webpages at: <https://new.shropshire.gov.uk/information-intelligence-and-insight/facts-and-figures/>