

# Shawbury Village Profile - 2018

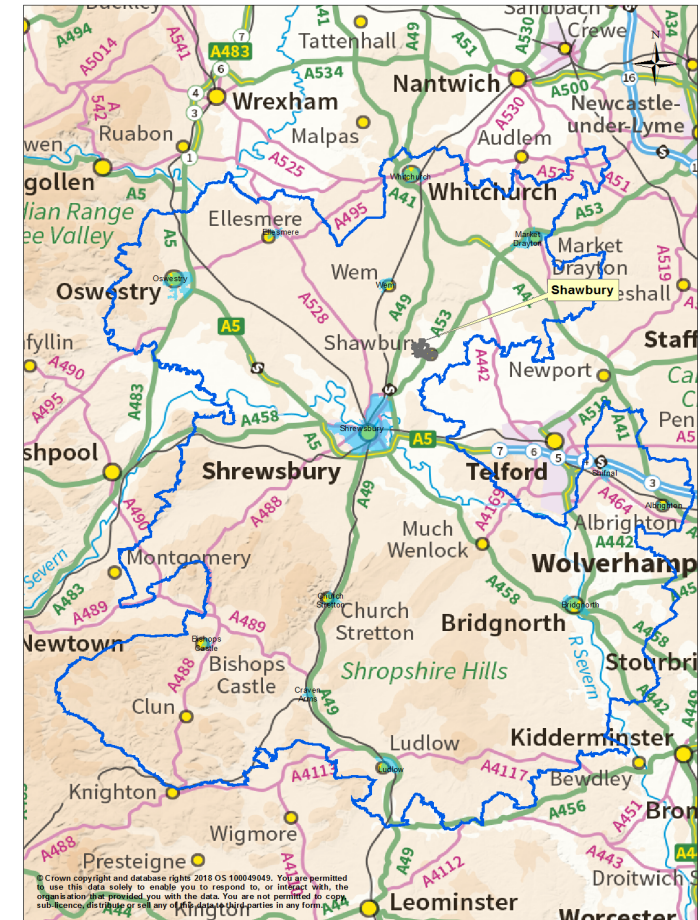
The village and Parish of Shawbury is located approximately 8 miles north of Shrewsbury and 12 miles from Market Drayton. The A53 road from Shrewsbury to Market Drayton runs between the village. The nearest rail station is Shrewsbury. The river Roden runs through the village.

The village is home to RAF Shawbury which is a helicopter airfield and training base for the RAF. The village is home to Shropshire's weather station based at the RAF site.

The village has a medical centre, a church, village hall and a football team Shawbury United FC. Shawbury has a range of shops including a convenience store, butchers, bakery, garden centre, two pubs, service station, taxi company and takeaway food shop.

Key Facts and Geography	
Area:	167.7 hectares
Population Density:	13.8 persons per hectare
Total Population	2317 (53 male %, 47% female)
Households:	845
Dwellings:	875
Communal Establishment	1

Source: 2011 Census



There is a local primary school St Mary's Shawbury CE Primary School. The village falls into the catchment for Thomas Adams School in Wem. Please visit Shropshire Council website for more details of schools in the and catchment areas.

[View a map of schools in Shropshire](#)

# Contents Page

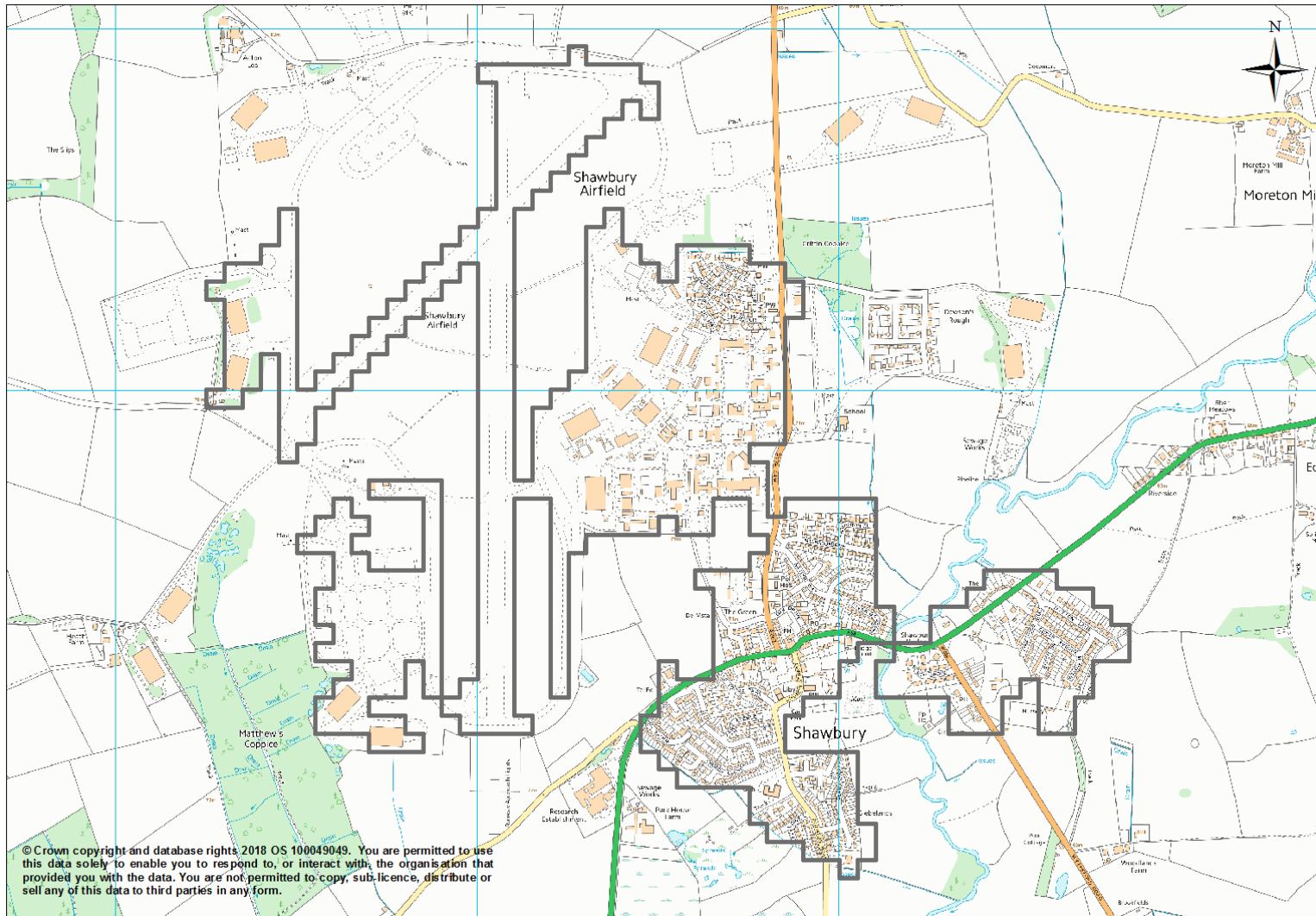
Location Maps	3
Demographics	4
Economy	11
Health	14
Housing	17

This Profile uses the Office for National Statistics (ONS) Built up Area (BUA) geography which is available for the 2011 Census results. For further information visit <https://www.ons.gov.uk/methodology/geography/ukgeographies/censusgeography>

These Profiles have been completed for large Shropshire villages over 1,000 population (15 in total) as at the 2011 Census. The profiles follow on from a suite of Market Town Profiles for Shropshire and Ward Profiles for Shropshire.

<https://www.shropshire.gov.uk/information-intelligence-and-insight/facts-and-figures/area-profiles/>

# Location Maps



To view the **Google Aerial Map** please select the following link - [Aerial Map](#)

# Demographics

## Population of Large Villages

Village	All usual residents	Males	Females	Lives in a household	Lives in a communal establishment	Area (Hectares)	Density (number of persons per hectare)
Alveley	1,578	771	807	1,578	0	64.50	24.5
Baschurch	1,595	763	832	1,570	25	66.75	23.9
Bayston Hill	5,079	2,488	2,591	5,020	59	132.00	38.5
Bomere Heath	1,254	609	645	1,249	5	45.00	27.9
Gobowen	3,270	1,594	1,676	2,914	356	115.75	28.3
Hanwood	1,090	527	563	1,085	5	44.25	24.6
Minsterley	1,532	762	770	1,532	0	57.00	26.9
Pant	1,998	978	1,020	1,992	6	122.00	16.4
Pontesbury	1,873	908	965	1,852	21	80.75	23.2
Prees	939	466	473	939	0	59.50	15.8
Ruyton-XI-Towns	1,040	542	498	906	134	47.75	21.8
<b>Shawbury</b>	<b>2,317</b>	<b>1,222</b>	<b>1,095</b>	<b>2,052</b>	<b>265</b>	<b>167.75</b>	<b>13.8</b>
St Martin's	2,471	1,224	1,247	2,460	11	75.50	32.7
Weston Rhyn	2,502	1,131	1,371	2,287	215	93.00	26.9
Whittington	1,481	717	764	1,471	10	56.75	26.1
<b>Total</b>	<b>30,019</b>	<b>14,702</b>	<b>15,317</b>	<b>28,907</b>	<b>1,112</b>	<b>1,228.25</b>	<b>24.4</b>
<b>Shropshire</b>	<b>306,129</b>	<b>151,606</b>	<b>154,523</b>	<b>298,183</b>	<b>7,946</b>	<b>319,730</b>	<b>1.0</b>
<b>England</b>	<b>53,012,456</b>	<b>26,069,148</b>	<b>26,943,308</b>	<b>52,059,931</b>	<b>952,525</b>	<b>13,027,842.85</b>	<b>4.1</b>

Source: 2011 Census

Information, Intelligence & Insight Team

Phone: 0345 678 9000, Email: [commissioning.support@shropshire.gov.uk](mailto:commissioning.support@shropshire.gov.uk)

# Demographics

## Age Structure

Age	Shawbury	Percentage	Shropshire percentage	England Percentage
All usual residents	2,317	100%	100%	100%
Age 0 to 4	104	5%	5%	6.3%
Age 5 to 7	78	3%	3%	3.4%
Age 8 to 9	62	2%	2%	2.2%
Age 10 to 14	161	7%	6%	5.8%
Age 15	26	2%	1%	1.2%
Age 16 to 17	39	6%	3%	2.5%
Age 18 to 19	50	3%	2%	2.6%
Age 20 to 24	203	5%	5%	6.8%
Age 25 to 29	190	5%	5%	6.9%
Age 30 to 44	491	17%	17%	20.6%
Age 45 to 59	416	20%	21%	19.4%
Age 60 to 64	110	7%	7%	6.0%
Age 65 to 74	215	10%	12%	8.6%
Age 75 to 84	123	5%	7%	5.5%
Age 85 to 89	33	1%	2%	1.5%
Age 90 and over	16	0%	1%	0.8%
Mean Age	39.0	100%	100%	39.3

Source: 2011 Census

# Demographics

## Ethnicity

Village	White	White British	Mixed/multiple ethnic groups	Asian/Asian British	Black/African/Caribbean/Black British	Other ethnic group
Alveley BUA	99.6	98.1	0.1	0.1	0.1	0.0
Baschurch BUA	99.0	97.1	0.7	0.2	0.1	0.0
Bayston Hill BUA	99.0	96.9	0.4	0.5	0.1	0.0
Bomere Heath BUA	98.6	96.5	0.7	0.6	0.2	0.0
Gobowen BUA	98.0	96.7	0.5	1.3	0.1	0.1
Hanwood BUA	97.9	96.3	0.8	0.9	0.0	0.4
Minsterley BUA	97.9	95.0	0.1	1.7	0.3	0.1
Pant BUA	99.3	97.1	0.2	0.5	0.0	0.0
Pontesbury BUA	99.1	97.2	0.2	0.7	0.0	0.0
Prees BUA	98.8	94.9	0.4	0.5	0.2	0.0
Ruyton-XI-Towns BUA	99.0	96.8	0.4	0.6	0.0	0.0
<b>Shawbury BUA</b>	<b>98.1</b>	<b>96.3</b>	<b>0.7</b>	<b>0.9</b>	<b>0.2</b>	<b>0.0</b>
St Martin's BUA	98.6	96.7	0.4	0.6	0.1	0.2
Weston Rhyn BUA	97.3	95.5	0.7	1.9	0.1	0.0
Whittington	99.1	97.6	0.1	0.9	0.0	0.0
BUA Shropshire over 1000 pop	98.6	96.7	0.4	0.8	0.1	0.0
<b>Shropshire</b>	<b>98.0</b>	<b>95.4</b>	<b>0.7</b>	<b>1.0</b>	<b>0.2</b>	<b>0.1</b>
<b>England</b>	<b>85.4</b>	<b>79.8</b>	<b>2.3</b>	<b>7.8</b>	<b>3.5</b>	<b>1.0</b>

Source: 2011 Census

# Demographics

## Religion

Village	Has religion	Christian	Buddhist	Hindu	Jewish	Muslim	Sikh	Other religion	No religion	Religion not stated
Alveley BUA	77.2	76.5	0.1	0.0	0.0	0.2	0.0	0.4	16.0	6.8
Baschurch BUA	78.7	77.9	0.3	0.0	0.1	0.1	0.0	0.4	15.4	5.9
Bayston Hill BUA	71.4	70.8	0.2	0.0	0.0	0.0	0.0	0.2	20.8	7.9
Bomere Heath BUA	75.0	74.3	0.1	0.2	0.0	0.1	0.2	0.2	18.5	6.5
Gobowen BUA	67.7	66.7	0.2	0.3	0.0	0.2	0.1	0.3	23.8	8.5
Hanwood BUA	70.3	69.0	0.2	0.0	0.0	0.5	0.0	0.6	21.8	7.9
Minsterley BUA	72.4	71.2	0.1	0.1	0.1	0.4	0.2	0.2	19.6	8.0
Pant BUA	73.6	72.7	0.1	0.1	0.1	0.3	0.0	0.5	19.9	6.5
Pontesbury BUA	70.7	69.9	0.1	0.3	0.0	0.0	0.0	0.4	22.1	7.3
Prees BUA	79.1	78.7	0.0	0.0	0.0	0.1	0.0	0.3	14.8	6.1
Ruyton-XI-Towns BUA	74.5	74.1	0.1	0.0	0.2	0.1	0.0	0.0	19.6	5.9
<b>Shawbury BUA</b>	<b>72.9</b>	<b>72.5</b>	<b>0.1</b>	<b>0.0</b>	<b>0.0</b>	<b>0.1</b>	<b>0.0</b>	<b>0.1</b>	<b>21.7</b>	<b>5.4</b>
St Martin's BUA	69.5	68.7	0.4	0.0	0.0	0.2	0.0	0.2	21.6	8.9
Weston Rhyn BUA	65.3	64.7	0.2	0.0	0.0	0.1	0.0	0.2	26.8	7.9
Whittington	73.9	73.0	0.5	0.1	0.0	0.0	0.3	0.1	19.0	7.0
BUA Shropshire	71.9	71.1	0.2	0.1	0.0	0.1	0.0	0.3	20.8	7.3
<b>Shropshire</b>	<b>69.9</b>	<b>68.7</b>	<b>0.3</b>	<b>0.1</b>	<b>0.0</b>	<b>0.3</b>	<b>0.1</b>	<b>0.4</b>	<b>22.8</b>	<b>7.3</b>
<b>England</b>	<b>68.1</b>	<b>59.4</b>	<b>0.5</b>	<b>1.5</b>	<b>0.5</b>	<b>5.0</b>	<b>0.8</b>	<b>0.4</b>	<b>24.7</b>	<b>7.2</b>

Source: 2011 Census

# Demographics

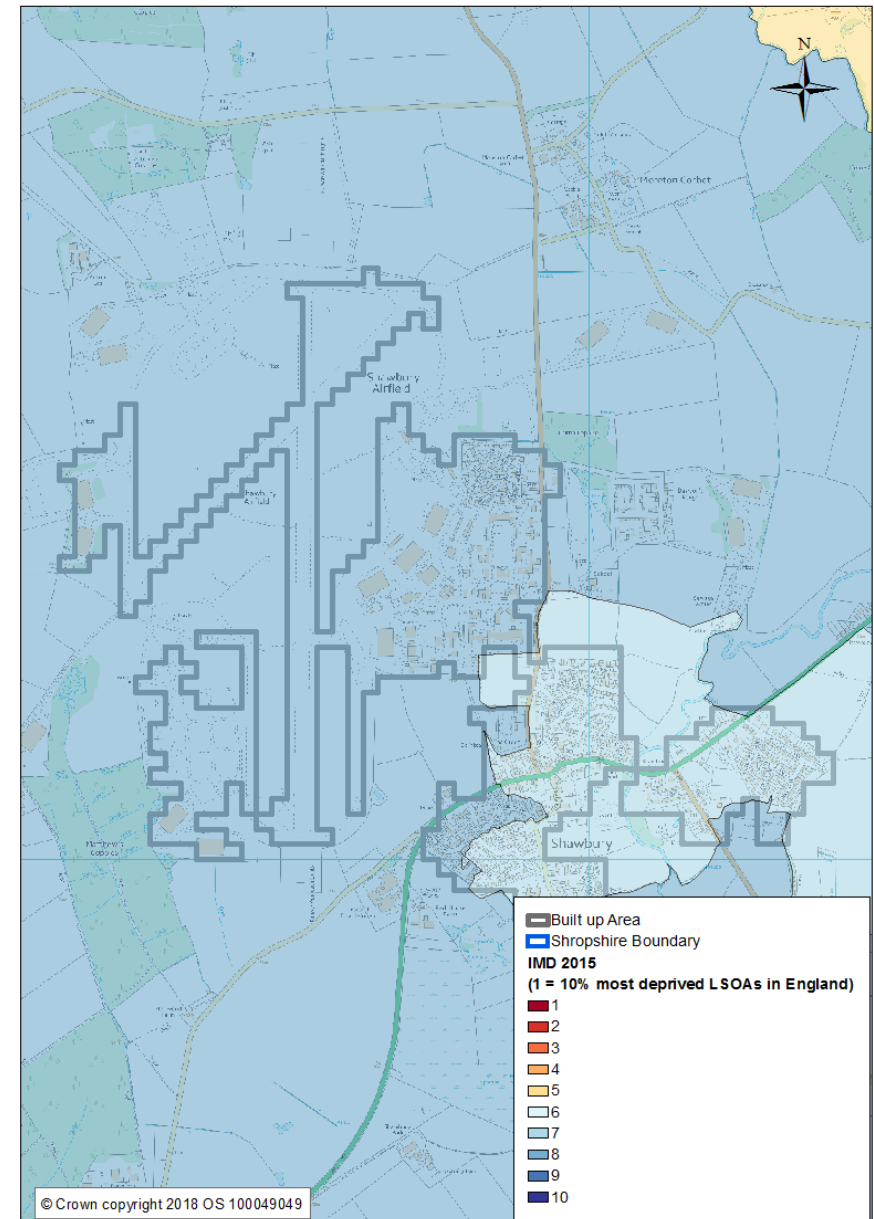
## Deprivation

Shawbury and the surrounding location has very low levels of deprivation and the area falls into the 8th and 7th most deprived deciles nationally (Decile 1 = most deprived Decile 10 = least deprived ).

The west area falls into the 10 percent (decile 1) most deprived LLSOA's in England for the Geographical Barriers to Services sub domain. The east side of the village falls into decile 7 and is less deprived. The west side of the village falls into decile 2 or the 20% most deprived nationally in terms of Barriers to Housing and Services domain. The east side of the village is much less deprived and falls into decile 10. (The RAF base is located on the west side of the village ).

Geographical Barriers measures physical distance to key facilities e.g. school, shop, GP.

Barriers to Housing and Services measures Household overcrowding, homelessness and housing affordability.





# Demographics

## Working Age Population (aged 16-64 Years)

Large Villages	Working Age %	Number
Alveley	57%	906
Baschurch	61%	965
Bayston Hill	60%	3,058
Bomere Heath	56%	707
Gobowen	64%	2,085
Hanwood	58%	637
Minsterley	61%	931
Pant	59%	1,176
Pontesbury	57%	1,067
Prees	59%	554
Ruyton-XI-Towns	55%	570
<b>Shawbury</b>	<b>65%</b>	<b>1,499</b>
St Martin's	63%	1,553
Weston Rhyn	64%	1,592
Whittington	62%	920
Total BUA's over 1000 Pop	61%	18,220
<b>Shropshire</b>	<b>62%</b>	<b>189,680</b>
<b>England</b>	<b>65%</b>	<b>34,329,091</b>

# Demographics

## Industry of Employment

Industry	Shawbury	Shropshire	England and Wales
Agriculture, forestry and fishing	1.9	3.9	0.9
Mining and quarrying	0.2	0.2	0.2
Manufacturing	6.0	10.6	8.9
Electricity, gas, steam and air conditioning supply	0.2	0.4	0.6
Water supply; sewerage, waste management and remediation activities	0.5	0.9	0.7
Construction	3.1	8.3	7.7
Wholesale and retail trade; repair of motor vehicles and motor cycles	11.8	16.1	15.9
Transport and storage	3.3	3.9	5.0
Accommodation and food service activities	5.4	5.5	5.6
Information and communication	1.7	2.7	4.0
Financial and insurance activities	1.3	2.0	4.3
Property	0.7	1.3	1.4
Professional, scientific and technical activities	3.2	5.2	6.6
Administrative and support service activities	3.5	3.9	4.9
Public administration and defence; compulsory social security	37.6	6.8	6.0
Education	7.0	10.0	9.9
Human health and social work activities	9.6	13.7	12.5
Other	2.8	4.7	5.0

The largest employer in Shawbury St Mary's C of E Primary School, Shawbury Medical Practice, and The Fox and Hounds Pub .  
(Source: Mint 2018)

# Economy

## Economic Inactivity

Economic Inactivity	Shawbury	%
Economically Inactive	394	23%
Economically Inactive retired	246	14.4%
Economically Inactive Student	41	2.4%
Economically Inactive looking after home or family	46	2.7%
Economically Inactive long term sick or disabled	41	2.4%
Economically Inactive Other	20	1.2%

Source: 2011 Census

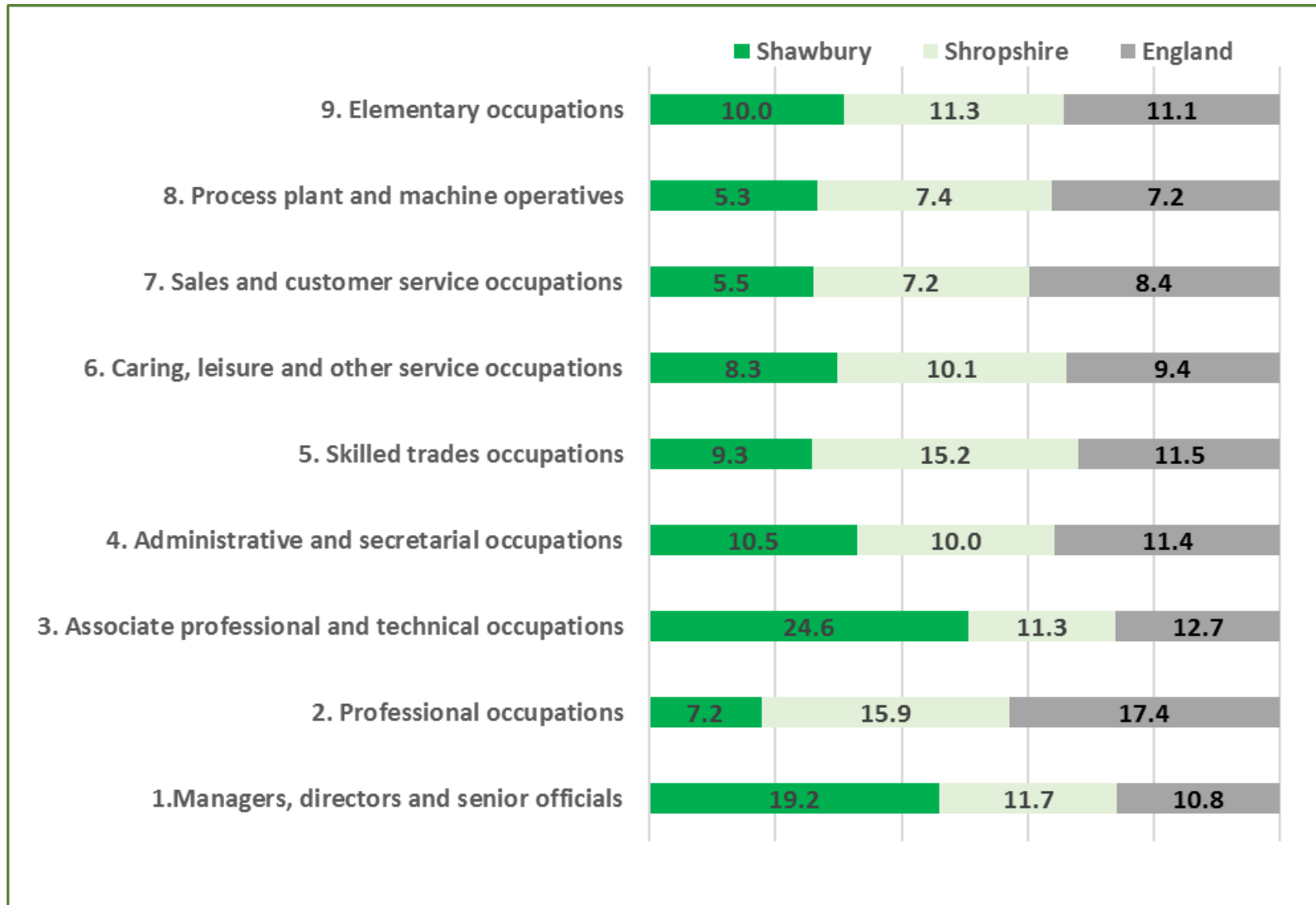
Economically Inactive is defined as, people of working age (16 – 64 years) who are not in employment, who have not been seeking work within the last 4 weeks and/or are unable to start work within the next 2 weeks. Please note economic inactivity refers to the 16 to 74 population rather than the 16-64 population

## Employment

Employment Breakdown	Shawbury	%
Economically Active	1288	86%
In Employment Total	1243	83%
Of which Employee: Total	1159	77%
Of which Employee: Part-time	230	15%
Of which Employee: Full-time	929	62%
Of which Self-employed: Total	84	56%
Unemployed including students	45	3%

# Economy

## Industry of Occupation



Source: 2011 Census

# Economy

## Qualifications

Built-up area	No qualifications	Level 1	Level 2	Apprenticeship	Level 3	Level 4	Other
Alveley BUA	24.2	11.9	17.9	3.4	10.8	28.1	3.7
Baschurch BUA	18.2	11.5	18.2	4.0	12.2	33.2	2.8
Bayston Hill BUA	19.5	10.9	17.1	4.6	13.7	30.2	4.0
Bomere Heath BUA	20.6	12.2	14.8	5.6	13.3	29.3	4.3
Gobowen BUA	31.0	13.6	15.6	3.7	11.1	19.5	5.6
Hanwood BUA	23.0	12.9	15.2	3.2	11.2	30.3	4.1
Minsterley BUA	27.3	14.8	16.8	3.5	11.6	20.1	5.9
Pant BUA	20.7	13.4	16.7	4.4	13.0	27.6	4.2
Pontesbury BUA	23.8	9.4	17.6	5.2	12.4	27.8	4.0
Prees BUA	27.3	12.9	16.0	3.9	13.1	23.7	3.1
Ruyton-XI-Towns BUA	13.2	12.7	17.2	4.6	13.9	34.6	3.8
<b>Shawbury BUA</b>	<b>16.9</b>	<b>11.9</b>	<b>18.3</b>	<b>3.9</b>	<b>15.3</b>	<b>30.0</b>	<b>3.8</b>
St Martin's BUA	29.9	14.9	16.3	4.1	10.7	19.8	4.3
Weston Rhyn BUA	23.0	14.0	20.3	4.6	12.7	21.2	4.2
Whittingto BUA	22.6	12.9	17.7	3.7	12.5	26.1	4.6
BUA Shropshire over 1000 pop	23.0	12.5	17.1	4.2	12.6	26.3	4.2
<b>Shropshire</b>	<b>22.5</b>	<b>13.1</b>	<b>16.8</b>	<b>3.7</b>	<b>12.2</b>	<b>27.5</b>	<b>4.2</b>
<b>England</b>	<b>22.5</b>	<b>13.3</b>	<b>15.2</b>	<b>3.6</b>	<b>12.4</b>	<b>27.4</b>	<b>5.7</b>

Source: 2011 Census

# Health

## Health Limiting Illness

Built-up area	Day-to-day activities limited a lot	Day-to-day activities limited a little	Day-to-day activities not limited
Alveley BUA	8.7	10.4	80.9
Baschurch BUA	6.9	10.3	82.8
Bayston Hill BUA	8.7	10.0	81.3
Bomere Heath BUA	9.5	12.4	78.1
Gobowen BUA	14.9	14.6	70.5
Hanwood BUA	11.1	11.3	77.6
Minsterley BUA	9.7	8.6	81.7
Pant BUA	8.8	11.6	79.6
Pontesbury BUA	9.0	11.5	79.5
Prees BUA	10.5	11.9	77.5
Ruyton-XI-Towns BUA	4.0	5.5	90.5
<b>Shawbury BUA</b>	<b>6.9</b>	<b>8.7</b>	<b>84.3</b>
St Martin's BUA	10.4	10.1	79.4
Weston Rhyn BUA	8.5	10.0	81.5
Whittington BUA	9.7	10.5	79.8
BUA Shropshire over 1000 pop	9.4	10.7	79.9
<b>Shropshire</b>	<b>8.4</b>	<b>10.2</b>	<b>81.4</b>
<b>England</b>	<b>8.3</b>	<b>9.3</b>	<b>82.4</b>

Source: 2011 Census

# Health

## Health Conditions

Built-up area	Very good health	Good health	Fair health	Bad health	Very bad health
Alveley BUA	41.9	37.6	15.4	4.0	1.1
Baschurch BUA	51.9	32.7	11.5	3.0	0.8
Bayston Hill BUA	44.7	37.2	13.3	3.9	1.0
Bomere Heath BUA	42.8	35.5	15.8	3.8	2.1
Gobowen BUA	41.1	35.6	16.7	4.5	2.1
Hanwood BUA	41.0	36.7	15.2	5.3	1.7
Minsterley BUA	42.6	37.1	14.6	4.7	1.0
Pant BUA	44.2	37.7	12.4	4.4	1.2
Pontesbury BUA	46.7	35.2	13.5	3.5	1.2
Prees BUA	44.2	33.2	14.7	6.3	1.6
Ruyton-XI-Towns BUA	60.5	29.8	7.7	1.5	0.5
<b>Shawbury BUA</b>	<b>52.9</b>	<b>32.4</b>	<b>10.4</b>	<b>3.6</b>	<b>0.8</b>
St Martin's BUA	44.9	34.8	14.6	4.2	1.5
Weston Rhyn BUA	48.6	32.8	13.5	4.0	1.2
Whittington BUA	45.2	34.0	14.9	5.1	0.7
BUA Shropshire over 1000 pop	45.8	35.1	13.7	4.1	1.2
<b>Shropshire</b>	<b>46.5</b>	<b>34.9</b>	<b>13.5</b>	<b>3.9</b>	<b>1.1</b>
<b>England</b>	<b>47.2</b>	<b>34.2</b>	<b>13.1</b>	<b>4.2</b>	<b>1.2</b>

Source: 2011 Census

# Health

## Health Care Provision

Built-up area	Provides 1 to 19 hours unpaid care a week	Provides 20 to 49 hours unpaid care a week	Provides 50 or more hours unpaid care a week
Alveley BUA	10.7	2.0	2.4
Baschurch BUA	8.5	0.8	2.3
Bayston Hill BUA	8.2	1.2	2.7
<b>Bomere Heath BUA</b>	<b>8.9</b>	<b>1.0</b>	<b>2.9</b>
Gobowen BUA	6.7	1.7	2.5
Hanwood BUA	6.9	1.3	3.8
Minsterley BUA	5.8	2.2	2.3
Pant BUA	7.3	1.2	3.7
Pontesbury BUA	8.6	0.9	2.3
Prees BUA	8.3	1.5	4.4
Ruyton-XI-Towns BUA	6.5	0.7	2.0
Shawbury BUA	5.6	1.3	2.2
St Martin's BUA	7.0	1.1	2.7
Weston Rhyn BUA	6.9	1.5	2.6
Whittington (Shropshire) BUA	8.2	1.8	2.4
BUA Shropshire over 1000 pop	7.5	1.3	2.7
<b>Shropshire</b>	<b>7.5</b>	<b>1.3</b>	<b>2.4</b>
<b>England</b>	<b>6.5</b>	<b>1.4</b>	<b>2.4</b>

Source: 2011 Census



# Housing

## Household Composition Source: 2011 Census

Built-up area	Owned	Owned: Owned outright	Owned: Owned with a mortgage or loan	Shared ownership (part owned and part rented)	Social rented	Social rented: Rented from council (Local Authority)	Social rented: Other	Private rented	Living rent free
Alveley BUA	80.9	49.9	31	0.1	10.4	9.1	1.3	6.4	2.1
Baschurch BUA	83.5	42.6	41	0.6	8.4	0.5	7.9	6.6	0.8
Bayston Hill BUA	86.7	51	35.7	0.1	4.9	1.1	3.8	7.3	1
Bomere Heath BUA	78.2	44.8	33.4	1.1	13	2.1	10.9	6.6	<b>1.1</b>
Gobowen BUA	69.7	38.4	31.2	0.4	19.1	15.7	3.4	7.9	2.8
Hanwood BUA	61.9	35.8	26.1	1.2	28.3	8.5	19.8	6.9	1.6
Minsterley BUA	66.2	30.8	35.4	0.9	21.5	5.4	16.1	9.3	2.1
Pant BUA	80.8	48.6	32.1	0.1	9.4	6.3	3.1	8.2	1.5
Pontesbury BUA	72.3	46.4	25.9	0.4	14.2	4.4	9.8	11.4	1.7
Prees BUA	78.6	42.5	36.1	0	10.2	1.7	8.5	9.2	2
Ruyton-XI-Towns BUA	76.2	35.3	40.8	0.3	10.1	8.2	1.9	10.1	3.3
<b>Shawbury BUA</b>	<b>63.4</b>	<b>32.4</b>	<b>31</b>	<b>0.8</b>	<b>17.5</b>	<b>1.1</b>	<b>16.4</b>	<b>17.2</b>	<b>1.1</b>
St Martin's BUA	72.6	37.7	34.9	0.1	18	14.2	3.8	6.4	2.9
Weston Rhyn BUA	68.4	36.7	31.7	0.2	18.9	15.2	3.7	9.9	2.5
Whittington (Shropshire) BUA	74.2	38.6	35.6	0.2	14.2	10.1	4	10.8	0.6
BUA Shropshire over 1000 pop	75.2	41.9	33.3	0.4	13.8	7.1	6.7	8.8	1.8
<b>Shropshire</b>	<b>69.2</b>	<b>38.6</b>	<b>30.6</b>	<b>0.6</b>	<b>13.5</b>	<b>5</b>	<b>8.5</b>	<b>15</b>	<b>1.8</b>
<b>England</b>	<b>63.3</b>	<b>30.6</b>	<b>32.8</b>	<b>0.8</b>	<b>17.7</b>	<b>9.4</b>	<b>8.3</b>	<b>16.8</b>	<b>1.3</b>

The average house price in Shawbury was £203,102 (Source Rightmove, 2017 figures)

# Housing

## Household Type

Built-up area	Whole house or bungalow: Detached	Whole house or bungalow: Semi-detached	Whole house or bungalow: Terraced (including end-terrace)	Flat, maisonette or apartment: Purpose-built block of flats or tenement	Flat, maisonette or apartment: Part of a converted or shared house (including bed-sits)	Flat, maisonette or apartment: In a commercial building
Alveley BUA	48.6	40.8	9.1	0.6	0.1	0.6
Baschurch BUA	63.6	28.4	6.4	0.6	0.5	0.5
Bayston Hill BUA	37.6	54.6	4.1	2.6	0.5	0.5
Bomere Heath BUA	61.5	22.2	7.7	7.3	0.7	0.5
Gobowen BUA	34.8	45.6	13	5.6	0.4	0.5
Hanwood BUA	43.4	34.3	12	9.4	0.6	0.4
Minsterley BUA	34	45.2	13.1	6.8	0.3	0.6
Pant BUA	62.3	24.6	8.9	2.8	0.6	0.5
Pontesbury BUA	53	26.5	8.3	9.9	1.3	0.6
Prees BUA	54.9	27.9	11	3.6	2.4	0
Ruyton-XI-Towns BUA	54	28.5	10.9	5.9	0.8	0
<b>Shawbury BUA</b>	<b>45.9</b>	<b>43.9</b>	<b>6.1</b>	<b>2.5</b>	<b>0.8</b>	<b>0.7</b>
St Martin's BUA	38.2	46.1	12.1	3	0.3	0.3
Weston Rhyn BUA	36.6	36.5	18.6	7	0.6	0.7
Whittington (Shropshire) BUA	47.7	37.4	13.1	0.9	0.3	0.5
BUA Shropshire over 1000 pop	45.3	39.4	9.8	4.3	0.6	0.5
<b>Shropshire</b>	<b>39.5</b>	<b>33.4</b>	<b>16.8</b>	<b>6.6</b>	<b>1.8</b>	<b>1.1</b>
<b>England</b>	<b>22.3</b>	<b>30.7</b>	<b>24.5</b>	<b>16.7</b>	<b>4.3</b>	<b>1.1</b>

Source: 2011 Census

# Housing

## Housing Development

Housing Allocations	Provision	Already Completed	Expected Build Out Rate									
			2017-18	2018-19	2019-20	2020-21	2021-22	2022-23	2023-24	2024-25	2025-26	2026-32
Land to the rear of Brickyard Farm, Poynton	50											

To view the Policy Map of Shropshire Council which shows areas for potential development use the following link— [Policy Map](#)

Note: There is currently a local plan review and further site allocations across Shropshire will follow. This site information shown above is based on the 2017 5 year land supply document which may potentially change following the review.

The Preferred Sites consultation is for potential new development sites is open between Dec 2018 and Jan 2019 and can be viewed here: <https://shropshire.gov.uk/get-involved/local-plan-review-preferred-sites-consultation/>

Other policy information can be viewed by using the following link— <https://shropshire.gov.uk/planning-policy/local-planning/local-plan-partial-review-2016-2036/>

## Additional Information

### Produced and designed by the Information, Intelligence and Insight team of Shropshire Council

Whilst every effort has been made to ensure the accuracy of the information contained within this profile, Shropshire Council can not accept any responsibility for errors or omissions. The inclusion of associations, organisations or facilities in this profile should not be taken as an endorsement by Shropshire Council of the services offered.

### Easy ways to get in touch

- Telephone - 0345 678 9000
- Email - [commissioning.support@shropshire.gov.uk](mailto:commissioning.support@shropshire.gov.uk)

### Find out more information on Shropshire

For more information on Shropshire including ward profiles, population data, Shropshire Snapshots, economic data and reports - visit our webpages at: <https://new.shropshire.gov.uk/information-intelligence-and-insight/facts-and-figures/>